



**JUL-AUG 2020**  
**004 / vol. 97**

NORTH ROSEDALE PARK  
DETROIT, MI

## IN THIS ISSUE

Board & Dues Reminder **pg. 2**

Letter from the President **pg. 3**

Blood Drive **pg. 5**

Farmers' Market **pg. 6**

Graduates **pg. 7-10**

# ROSEDALE TATTTLER



**LET'S BEGIN AGAIN,  
TOGETHER**

The Rosedale Tattler is a publication of the North Rosedale Park Civic Association. Established in 1924, the North Rosedale Park Civic Association is a community organization that promotes the interests and welfare of North Rosedale Park residents, maintains park facilities for community use, advocates for necessary public improvements, and enforces building restrictions and ordinances within North Rosedale Park.

# NRPCA 2020 BOARD OF DIRECTORS

**PRESIDENT** Wendy Jackson • wljackson@kresge.org  
**VICE PRESIDENT** James Martin • james@nrpca.org  
**PAST PRESIDENT** Bill Frey • bill@nrpca.org

## DIRECTORS

Sarah Hulett • sarah.hulett@gmail.com  
Karen Graham • kgraham877@gmail.com  
Christopher Krupa • Christopher.krupa@yahoo.com  
Beverly Frederick • frederickbly@gmail.com  
Ebonee West • eboneewest1@gmail.com  
Adriane Henry • adriane@nrpca.org  
Billie Newsom • Billie6000@aol.com

## TREASURER

John Gumbel • TreasurerNRPCA@gmail.com • 313-531-5817

## MEMBERSHIP SECRETARY

Chelsea Neblett • chelsea@nrpca.org • 734-323-2487

## CORRESPONDING SECRETARY

Marcia Bonner • marciabonner1@gmail.com

## RECORDING SECRETARY

JaNae Harrison • harrison.jj84@gmail.com

## BLDG. MANAGER

Deena Policicchio • rentals@nrpca.org • 313-837-3416

## PROGRAM MANAGER

Gloria Goodwine • nrpcaprograms@gmail.com • 313-971-3990

## ADVERTISING COORDINATOR

BrieAnn Bell • brieannbell@gmail.com

## TATTLER EDITOR

Amanda Chubb • tattler@nrpca.org  
Amanda Rosales • tattler@nrpca.org

## TATTLER DESIGNER

Anthia Ann • anthaann34@gmail.com

## TECHNICAL SUPPORT

Dexter Slusarski • dexter@nrpca.org



The Rosedale Tattler is a bi-monthly newsletter published by the NRPCA. All articles and advertisements for the next edition are due by **AUGUST 17, 2020**. Please contact [Tattler@nrpca.org](mailto:Tattler@nrpca.org) to submit articles or for advertising rates and policies. We welcome and encourage submissions. The author's name, address and phone number is required for publication. The editorial staff reserves the right to edit submissions for space or material which they deem obscene, defamatory, deceptive or misleading.

**TAG'S TAXES LLC**  
PROFESSIONAL AND QUALIFIED

Theresa  
"It's My Time to Shine"

Phone: 313.463.8943  
Fax: 313.740.7389  
[tagtaxesllc129@gmail.com](mailto:tagtaxesllc129@gmail.com)

Appointment Only • Pick Up and Delivery Available

P.O. BOX 435 • SOUTHFIELD, MI 48037

**PIANO & GUITAR LESSONS**  
FOR THE YOUNG & THE NOT-SO-YOUNG  
**313.255.1627**



Specializing in state to state and local travel for corporate, community and family events. Call us today to charter our luxury coach services. We look forward to traveling with you!

**\*\*Safe Drivers**  
**\*\*Electrical outlets**  
**\*\*Spacious bathroom**

**\*\*Seating for 56**  
**\*\*On board Wi-Fi**  
**\*\*Comfortable seating**

Toll Free: 877-546-4535  
Local: 313-397-8341  
 First\_Love\_Tours



## WASTE PICKUP

Get reminder text messages!

The City of Detroit DPW offers a free text reminder service for waste pickups. **Text your address to 313.800.7905.**



## 2020 DUES REMINDER NOTICE

As a dues paying member of NRPCA, you are part owner of the Community House and grounds and we desperately need your support! North Rosedale Park is the only neighborhood in Detroit that owns such a wonderful place for residents to gather, children to play and neighborhood issues to be discussed.

**The cost of membership is \$75 per year, or \$6.25 per month, or just 20¢ per day.**

Only residents of North Rosedale Park who have paid their dues by the annual meeting (Jan. 10, 2020) and Life Members of the NRPCA can vote in the election for Board Members.

Dues can be paid the night of the election and anytime online at [www.nrpca.org/membership](http://www.nrpca.org/membership)

## **LET'S BEGIN AGAIN, TOGETHER**



**DEAR NEIGHBORS,**

I've missed seeing many of you these last few months. The end of February was the last time we were able to come together as a North Rosedale Park community for a neighborhood event. It was a week before the first cases of the Coronavirus pandemic arrived in Michigan, and more than 100 neighbors braved the snow and ice to celebrate our partnership with the Michigan Opera Theatre and attend a conversation with multi-Grammy Award winner, trumpeter and composer, Terence Blanchard. That night was a perfect example of what makes our neighborhood special and it was the start of a series of incredible programming planned for the year. Then, just like that, we had to cancel everything all at once. As we start the month of June, no one could have ever imagined how much our lives would change and that as a neighborhood we would face this historic pandemic together. COVID-19 hit our city and neighborhood with unrelenting force. To save lives we suspended our daily routines, missed important milestones, and shuttered businesses. Social distancing and flattening the curve were concepts added to our everyday vocabulary. Over the last twelve weeks, the toll on our community has been difficult and we all worked collectively to support each other in the unimaginable loss of our neighbors, colleagues, family and friends who succumbed to the disease. Our hearts go out to all our neighbors that have been impacted by this unprecedented challenge and we appreciate those working on the frontlines to contain COVID-19.

### **NEIGHBORS HELPING NEIGHBORS**

The Coronavirus may have required us to "stay home and stay safe" but it hasn't stopped the sense of community in North Rosedale Park. Thanks to our network of committed volunteer leaders and donors, North Rosedale Park quickly mobilized to ensure that neighbors can help neighbors. Many of you are involved in supporting essential workers, organizing to obtain groceries and protective gear for seniors, supporting local businesses, and raising funds to support the operations of the North Rosedale Park Civic Association and Grandmont Rosedale Development Corporation. Without missing a beat, the North Rosedale Park Block Captains moved from in-person meetings to Zoom video conferencing. Many of our blocks gathered with social distancing guidelines in effect at 7:00 pm to greet one another from afar and celebrate frontline workers. Others, like my own block, showed support with blue tree trunk ribbons. Thanks to NRPCA Board Member, Karen Graham, a committee has been formed to identify other ways to support frontline workers who live in the neighborhood. Several of our neighbors found new ways to connect online, including our neighborhood Boy Scout Troop who held its first-ever virtual meeting. We were given the gift of "happy rocks" by 10-year old Evelyn Wybenga and other anonymous painters. Their messages of resilience and encouragement vibrantly painted on rocks were a bright spot during some of the most difficult weeks of the quarantine.

### **NRPCA BOARD OF DIRECTORS RESPONDS**

Until there is a medically-proven vaccine, social distancing is the only way to stop the Coronavirus so the North Rosedale Park Civic Association Board of Directors conscientiously monitored the impact of COVID-19 on our neighborhood and put certain precautions in place at the Community House to ensure that the members of our community could do their part to flatten the curve. We had to navigate many changes in a short period of time to cancel everything and ensure that North

*Continued on next page...*



# LETTER FROM THE PRESIDENT CONT.

Rosedale Park complied with local and state safety orders. For the first time in the Association's history we had to cancel all programs and events until further notice. This included the Spring General Membership Meeting, Annual Easter Egg Hunt and now June Day (June 19). Association Board meetings went virtual. The "Tattler" newsletter will be delivered electronically until further notice as to not risk the health of the carriers. Closing the playground was probably one of the more difficult decisions that we have had to make during this time. The prohibition of large groups by the Stay Home, Stay Safe Order resulted in the cancelation of Community House rental events through July 2020. Thankfully, we were also able to draw on new leaders who were appointed to the Board during this time. Please welcome Ebonee West and JaNae Harrison to the Board. Ebonee will fill our vacant Director position and lead this year's Steak Roast. JaNae will serve as our new Board Recording Secretary.

## HOW YOU CAN HELP - YOUR MEMBERSHIP MEANS EVERYTHING

As the number of COVID-19 cases continues to decline we must begin again and together forge a new path ahead. The reverberations that have resulted in the wake of this extraordinary public health and economic crisis will be deeply felt. North Rosedale Park isn't immune, and the North Rosedale Park Civic Association has revised its 2020 budget for neighborhood events and programs based on declining revenue from pandemic-related cancellations. Your financial support will help the neighborhood get through a critical time. North Rosedale Park is the only neighborhood in the city with a 4-acre park and Community House for neighborhood use. We rely on Community House rental income for the maintenance of the building and park grounds as well as community programs from the Steak Roast to June Day.

The 2020 general membership renewal campaign is currently underway. By renewing your general membership at \$75, you help protect the Community House and Park for this and future generations. We are very grateful for your past membership and please make your donation for this year at [www.nrPCA.org](http://www.nrPCA.org).

Thanks to the leadership of Beverly Frederick (2020 NRPCA Board Member) and Dr. Susan Steigerwalt, (2015 NRPCA President) the Red Rose Society Membership Campaign has been relaunched. Red Rose Society members are part of circle of neighbors that help us preserve and enhance the quality of life in North Rosedale Park at a higher giving level of \$250. For more information and to make a Red Rose Society Membership gift, please visit our website at [www.nrPCA.org](http://www.nrPCA.org)

## NORTH ROSEDALE PARK - 100 YEARS STRONG

The North Rosedale Park neighborhood was founded in 1919 in the aftermath of the 1918 flu pandemic with the first residents moving into newly built homes in 1920. Our Centennial Committee is still working to launch events that will celebrate this impressive milestone. As soon as it's safe to gather, we plan to host a community picnic to kick-off those celebrations.

The North Rosedale Park Civic Association will continue to follow the guidance from the Centers for Disease Control and local and state health officials. We will share updates with you on our neighborhood social media feeds and eBlast as appropriate. As you walk, bike, and jog around our beautiful neighborhood, please continue to practice social distancing and take other safety precautions.

Thank you for your patience and understanding as we move forward as a community - together. Be safe!

**WITH GRATITUDE,  
WENDY**





## BLOOD DRIVE

After a successful blood drive in June, the Red Cross will be holding two additional blood drives at the Community House this summer. Masks will be required for all participants, and physical distancing will be observed as much as possible.

**Tuesday, July 28 from 11am - 5 pm**

**Wednesday, August 19 from 11am - 5 pm**

### AUTOMATIC ANTIBODY TESTING

As an additional benefit to donating blood at these drives, donors will automatically have their blood tested for COVID-19 antibodies by the Red Cross and will be notified of the results about a week after their donation.

Sign up to donate at [www.redcrossblood.org](https://www.redcrossblood.org)

[https://www.redcrossblood.org/give.html/drive-results?zipSponsor=rosedale&cid=siebel&med=email&source=bdc\\_email&utm\\_source=siebel&utm\\_medium=email&utm\\_campaign=bdc\\_email](https://www.redcrossblood.org/give.html/drive-results?zipSponsor=rosedale&cid=siebel&med=email&source=bdc_email&utm_source=siebel&utm_medium=email&utm_campaign=bdc_email)

### VOLUNTEERS NEEDED

Each 6-hour drive needs about 15 community volunteers to assist. Assignments include taking donor temperatures, using a computer to check pre-registration details, and passing out juice and cookies after donations. Volunteer shifts are two and a half hours long, starting at 10:30 a.m. until 5:00 p.m.

To volunteer, contact Pam Weinstein;

[weinstein148@ameritech.net](mailto:weinstein148@ameritech.net) or (313) 231-2244.



## WE NEED YOUR HELP WITH THE CENTENNIAL BOOK

As we celebrate the 100<sup>th</sup> anniversary of North Rosedale Park this year, we are developing a book to chronicle the history of our community.

*Would you like to help with this effort?*

- Q1.** Do you have pictures from activities in the Park or photos of North Rosedale Park homes over the years?
- Q2.** Do you have an interesting story or anecdote (or know someone who does) that we can include in the book?
- Q3.** Do you have documents pertaining to your house (blue prints, original deed, photos of your house under construction, etc.)
- Q4.** Do you have North Rosedale Park artifacts (posters, buttons, signs, etc.)?
- Q5.** Would you like to help us archive and catalog past Tattlers?

If you would like to assist in any way or have questions, please contact Rose Love at (313) 850-1940 or via email at [rosedaniellove@gmail.com](mailto:rosedaniellove@gmail.com).

## SUPPORT YOUR SMALL BUSINESS COMMUNITY

Small businesses have been hit particularly hard during the COVID-19 pandemic and so it has never been more important to shop locally. Several of our small businesses have re-opened with safety measures in place. Small business owners are focused on keeping their customers and employees as safe as possible and so have incorporated several safety measures such as social distancing, limited hours, offering curbside and/or no-contact pick-up, gift cards options and more.

If you have a favorite Grandmont Rosedale business, reach out to that business owner and see how you can support them. Follow them on social media, check out their website, or even give them a call and let them know that you value their presence in our community and are willing to do what you can to be sure they remain here.





## THE 16<sup>TH</sup> SEASON BEGINS

Due to COVID-19, the Northwest Detroit Farmers' Market is taking extra precautions to ensure the safety of our customers. We have changed our market hours and operations to accommodate these changes. Here's what you need to know to keep eating healthy and to support local small businesses:

Your pre-ordered grocery box (and other goodies) will be ready for pick-up at the Northwest Detroit Farmers' Market **every Thursday from 4 – 6 pm** at the North Rosedale Park Community House, 18445 Scarsdale. For a fee, you can also opt to have your grocery box delivered.

Order your grocery box at [grandmontrosedale.com](http://grandmontrosedale.com) by **5 pm on Monday**, and your order will be ready by Thursday Market Day.

Please stay home if you have a fever, cough, difficulty breathing or are experiencing any other symptoms related to COVID-19, if you have been in close contact (50 feet or less) with anyone that has tested positive for COVID-19, or if you have traveled by airplane domestically or internationally in the last 14 days. If you stay home for any of these reasons, contact us as soon as possible to make alternate arrangements.

We accept EBT for all eligible food items.

While we hope to resume our in-person Market in July 2020, we cannot confirm a start date at this time. Stay in touch for more information by liking the NWDFM at <https://www.facebook.com/nwdetroitfarmersmarket/> and GRDC at <https://www.facebook.com/GrandmontRosedaleDevelop>. You can also reach Market Manager Kiki Louya at [kiki@grandmontrosedale.com](mailto:kiki@grandmontrosedale.com) or **313.387.4732, ext. 116**.

### BECOME A FRIEND OF THE FARMERS' MARKET!

If you've been spending your quarantine time coming up with ways you'd like to become involved in our Farmers' Market, we'd really like to hear your ideas about activities, vendor recruitment and special events. If you are an avid gardener or an urban farmer, or you make it a point to buy in-season, local produce and love to find new ways to bring fresh food to your dinner table, we want to hear your ideas about how to make the Northwest Detroit Farmers' Market your favorite market! Let GRDC's Market Manager Kiki know that you'd like to be a Friend of the NW Detroit Farmers' Market this season at 313.387.4732, ext. 116 or [kiki@grandmontrosedale.com](mailto:kiki@grandmontrosedale.com).



### GRAND RIVER WORKPLACE RE-OPENS WITH SAFETY MEASURES IN PLACE

The Grand River WorkPlace welcomed back its members in June with several safety measures in place. GRDC is committed to Grand River WorkPlace member safety, while doing our best to accommodate our members' needs. We hope to be able to expand offerings such as extended hours, a space for gatherings and large meetings, but this will take time, so we ask for your patience. Stay in touch with the WorkPlace to learn about safety requirements and changes to our hours. Like Grand River WorkPlace on Facebook, or contact Economic Development Manager Kiki Louya at [kiki@grandmontrosedale.com](mailto:kiki@grandmontrosedale.com) or **313.387.4732, ext. 116**.



### GRDC PARTNERS WITH TCF BANK TO BEAUTIFY GRANDMONT ROSEDALE

GRDC is pleased to announce that it has received a \$25,000 beautification grant from TCF Bank for the Grandmont Rosedale community. Shared equally among the five neighborhoods that comprise Grandmont Rosedale, this grant will enable the realization of resident-led initiatives to beautify our communities. For more information about this project, contact GRDC's Community Engagement Manager Kitty Yarbrough at [kyarbrough@grandmontrosedale.com](mailto:kyarbrough@grandmontrosedale.com).



### THERE WILL BE NO FORECLOSURES DUE TO UNPAID PROPERTY TAX

Wayne County has suspended foreclosures due to unpaid property taxes for 2020. The tax debt will have to be paid, however, unless a Property Tax Exemption is applied. To learn more about applying for a Property Tax Exemption, contact Community Engagement Manager Kitty Yarbrough at [kyarbrough@grandmontrosedale.com](mailto:kyarbrough@grandmontrosedale.com) or 313.387.4732, ext. 103.

### NEIGHBORS BEAUTIFY THE RAIN GARDENS AROUND THE COMMUNITY HOUSE

Sunday, June 7, 2020. Many thanks and appreciation goes out to: Adriane Henry, Erma Leaphart, Susan Steigerwalt, Beverly Stella, Marcia Closson, Mary Madigan, Tom Goddeeris and Jerry Spriggs







## NRP BLOCK CAPTAIN, ALLAN TELLIS & NRP CO-BLOCK CAPTAIN, RAYMOND GREGORY

Neighbors tie blue ribbons around trees as a show of support for front line workers during the pandemic.

## GRADUATION PARADE

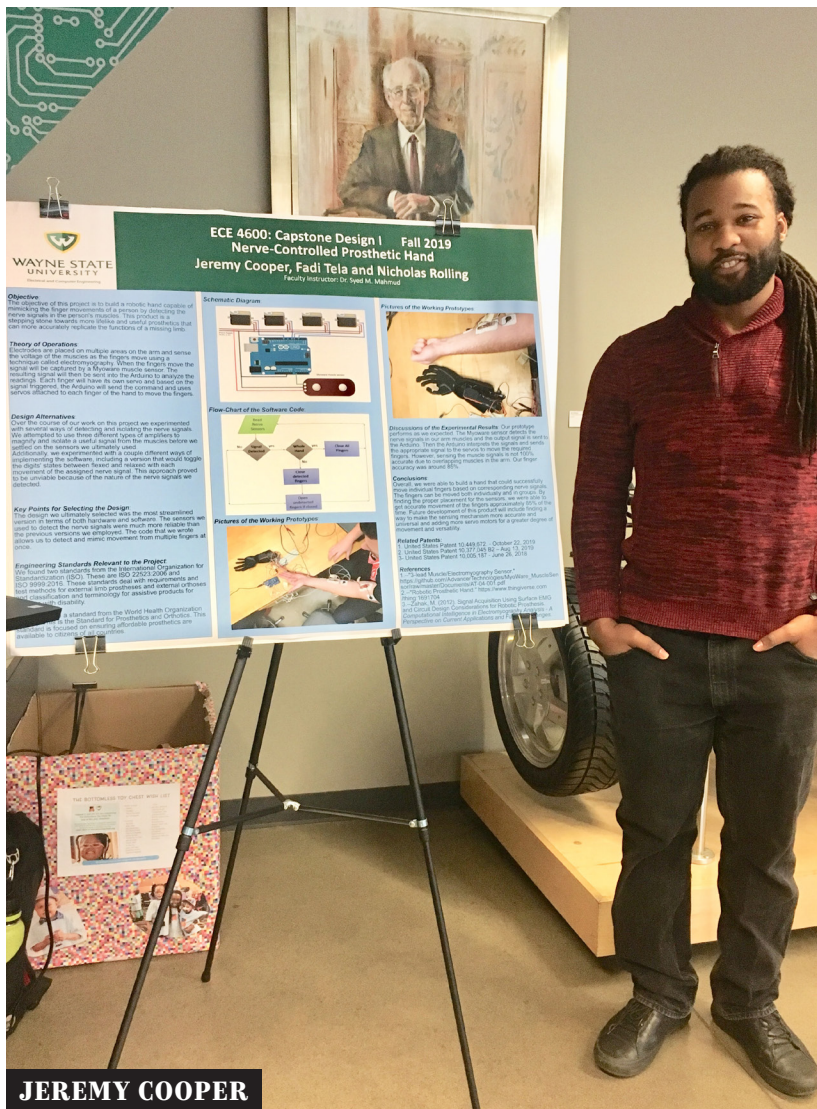
North Rosedale came out in spectacular fashion June 6 to celebrate its graduates in quarantine. A car caravan of well over a dozen decorated vehicles cruised many blocks of the park – horns blaring, songs blasting, and bubble guns blowing. The families of about twenty grads answered a query in May to participate, although there were certainly others who were celebrated as well. Some grads paraded with the caravan; other grads, watched the procession from their front yards in cap and gown as their neighbors hooted and waved on their way past. Congrats, class of 2020 – and thank you, wonderful neighbors!











**JEREMY COOPER**



**JOHN GARRETT**



**MADDIE GRUNOW**



**CALI SUNSHINE REESE**



**JOSHUA COOPER**



**AVERY BURCH**





**AVERY BURCH**, resident of Bretton Drive, is a graduate of River Rouge High School. He is a National Honor Society member, Academic All State, a State championship winner - Football, and is Michigan's first Black kicker to make First Team All State. He owns a business, Loyalty Over Fame. He will be attending Lawrence Tech University on a football scholarship as a kicker.

**JOSHUA COOPER**, resident of Edinborough Road, is a graduate of the University of Michigan. Joshua is a lifetime resident of North Rosedale Park, and is a third generation Michigan grad who just completed his Bachelor's Degree in Science and Engineering, majoring in Materials Science and Engineering. While obtaining his degree he was a member of the Bartlett Research Group, focusing on renewable energy storage, and is published in the Journal of Physical Chemistry: Kinetics and Faradaic Efficiency of Oxygen Evolution on Reduced HxWO3 Photoelectrodes. Joshua was captain of the Men's Saber Team on the University of Michigan Fencing Club. During his time with the club they were two-time national champions. Go Blue!

**JEREMY COOPER**, resident of Edinborough Road, is a graduate of Wayne State University. Jeremy is a lifelong resident of North Rosedale Park. He is the son of Shaun and Elizabeth, brother of Joshua. Jeremy graduated with his second degree, this time from Wayne State University with a Bachelor's of Science in Electrical Engineering. His senior project is a Nerve-Controlled Prosthetic Hand. He and his team were able to design and build a prosthetic hand capable of reading nerve impulses using electromyography and mimicking the finger movements of the subject controlling the device. Previously, Jeremy completed a degree from the University of Michigan in Neuroscience.

**JOHN GARRETT**, resident of Lancashire Street, is a graduate of University of Detroit Jesuit High School and will be studying Music Therapy at Western Michigan University. He participated in the marching band, jazz band, porch concerts for NRP neighbors, and was the lead in Joseph and the Amazing Technicolor Dreamcoat at U of D after many years working on the "crew." He is a former Tattler deliverer and a GRDC Volunteer of the Month.

**MADELEINE (MADDY) GRUNOW**, resident of Shaftsbury Avenue, is a graduate of Marian High School. She will attend either Kalamazoo College or the University of Michigan - Ann Arbor. She graduated with a 4.2 grade point average, and participated in National Honor Society, Spanish Honor Society, Arts Honor Society, Friends of the Earth, and Diversity Matters.

**CALI SUNSHINE REECE**, resident of Edinborough Road, is a graduate of Renaissance High School in Detroit. She will attend the United States Naval Academy, majoring in Aeronautical Engineering to become a pilot. She has spent two years in the Army Junior Reserve Officers' Training Corps as Cadet Sergeant First Class, and was a member of the Varsity softball team.

Did we miss your graduate? Submit his or her information to [tattler@nrpca.org](mailto:tattler@nrpca.org) to be included in the next issue of the Tattler.

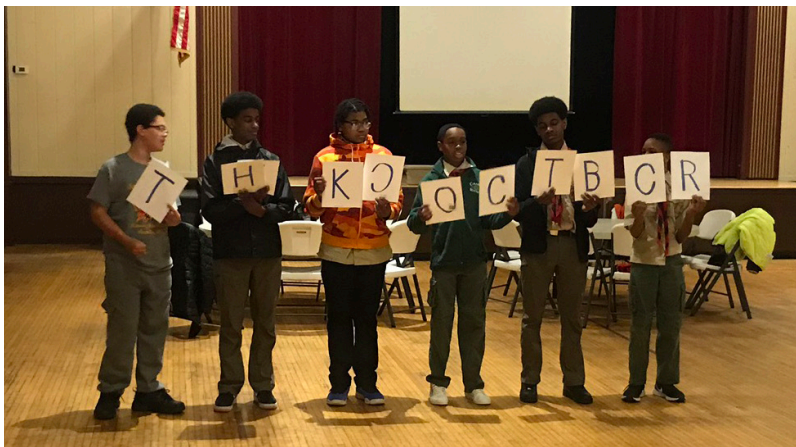
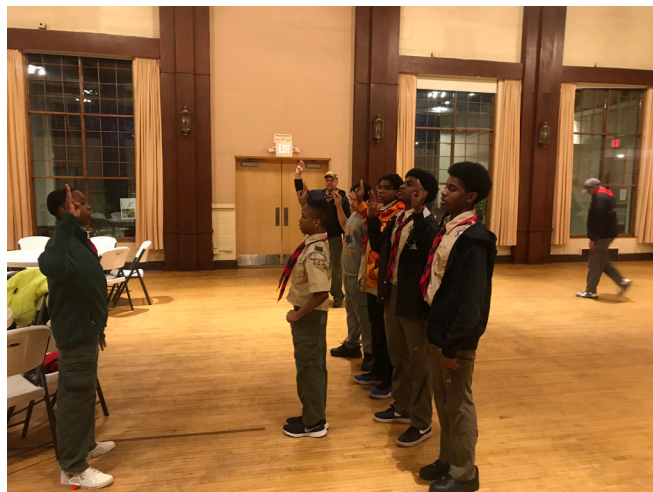


## BOY SCOUT TROOP CONTINUES LEGACY OF ACHIEVEMENT

Troop 123 hosted an advancement ceremony in March 2020, where ten Scouts moved up in rank. They have worked hard in mastering outdoor skills and eight of them should be considered accomplished woodsmen as they have camped, hiked, and performed a multitude of outdoor Detroit community service projects.

In addition to advancement patches, they were also awarded patches for attending events such as camping overnight on the USS LST, a WWII carrier ship which landed tanks and jeeps on beaches which is located in Muskegon Harbor on the west side of the state. Other adventures were indoor cycling at the Lexus Velodrome at Mack and I-75, traveling to southern Ohio to visit caves, camping overnight on Belle Isle Park and acting as flag bearers for Metro Youth Day.

The boys of Troop 123 are learning a lot and having fun! If you know of young men, aged 11-17, who enjoy adventure and the outdoors, please have them contact Scoutmaster **Kevin Johnson; (313) 549-7387**.



## COMMUNITY HOUSE

### NORTH ROSEDALE PARK CIVIC ASSOCIATION

18445 Scarsdale Detroit, MI 48223  
(313) 837-3416 • [www.nrpca.org](http://www.nrpca.org)

ALL COMMUNITY HOUSE  
PROGRAMMING IS CANCELLED  
UNTIL FURTHER NOTICE.



# JERRY'S

## DRYWALL PLASTER & PAINTING SERVICE

A Business that CARES about their Workmanship

**DRYWALL INSTALLATION  
DRYWALL REPAIR  
PLASTER REPAIR  
PAINTING  
WALL PAPER REMOVAL**

**FREE ROOM PAINTING WITH 8  
SQUARE FOOT OF DRYWALL  
OR PLASTER SERVICE.**

# 20%

**DISCOUNT FOR SENIORS**

**30 Years of  
Experience**

**FREE Estimates Call  
(313) 864-3398 OFFICE  
(313) 258-7744 CELL**

## Welcome to Oak Street Health

Doctors for Adults  
on Medicare

We take the time to get to know you and answer all your questions face-to-face. We're real people who are passionate about your health and well-being, right here in your neighborhood.

### The Oak Street Health Difference



#### We get to know you.

Every visit with your doctor is 20 minutes or more.



#### We make visits convenient.

Same-day and next-day appointments.



#### We build a plan just for you.

Our teams personalize your care plan to your exact needs.



#### We come to you.

Transportation to and from your Oak Street Health appointments if needed.



#### We make insurance easy.

We have experts at every center who support you with your Medicare plan.



#### We're more than a doctor's office.

We're a community center for you, your neighbors and friends.



#### 24/7 Live Support

Patients can call us anytime - even weekends and holidays.



**OAK  
STREET  
HEALTH**

Oak Street Health - Rosedale Park | 18610 Fenkell Ave., Suite B | Detroit, MI 48223

844.808.8262 *Se habla español* | oakstreethealth.com



## Jack Allen Construction

General Contractors/Construction  
Managers/ Home Staging

[www.jackallen.us](http://www.jackallen.us)

**JACK ALLEN CONSTRUCTION**

**Reggie Allen Jackson**

Email: [reggie@jackallen.us](mailto:reggie@jackallen.us)

Mobile: (313) 457-7800

Office: (313) 468-9726



**JACK ALLEN CONSTRUCTION**  
Home Staging & Redesign Services  
by

**Kimmie Jackson**  
Certified Home Stager

[kim@jackallen.us](mailto:kim@jackallen.us)  
256.457.3250



Dear North Rosedale Park Residences and Business Owners,

I would like to take this opportunity to introduce myself. My name is Melissa Poirier and I am a real estate agent and also your neighbor on Bretton Drive.

I am reaching out to let you know I am here to provide my services to buyers, sellers and anyone else interested in living in our community.

As a member of the community I have the unique ability to share my first hand expertise and my passion for all our neighborhood has to offer. I would love to share my knowledge with current and perspective North Rosedale Park residents to continue to grow our unique, community-oriented neighborhood.

If my services could be of use to use, I would appreciate the opportunity to meet and learn more about your goals. You can count on me to provide up-to-date information, honest answers and dependable communication.

If you have any questions please contact me anytime or if you know anyone interested in living in our neighborhood I would appreciate you connecting us.

All the Best,



Melissa Poirier



Cell Phone: 734.776.7226 | Office: 734.882.6006

243 Main Street, Belleville, MI 48111

Website: [nhevolutionmi.com/team/melissa-poirier/](http://nhevolutionmi.com/team/melissa-poirier/)



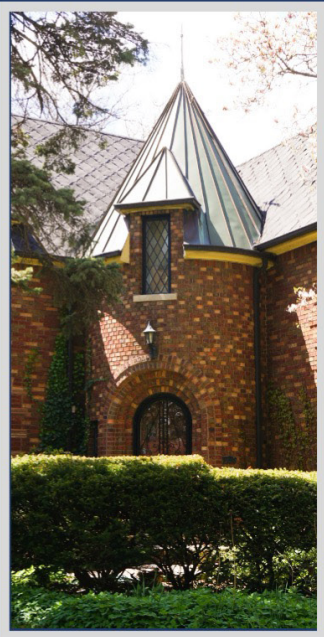
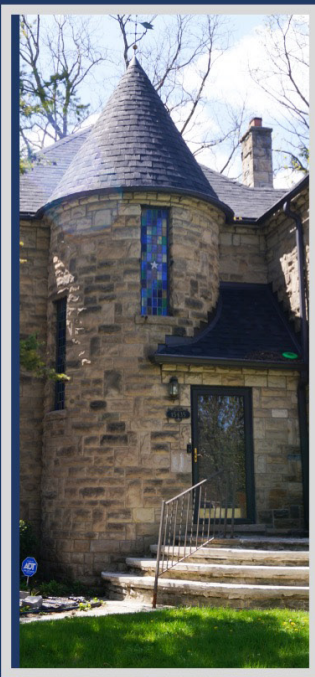
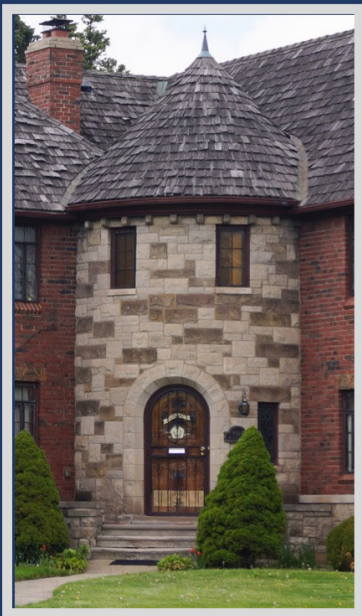
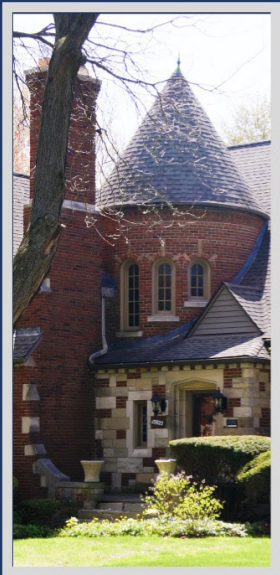
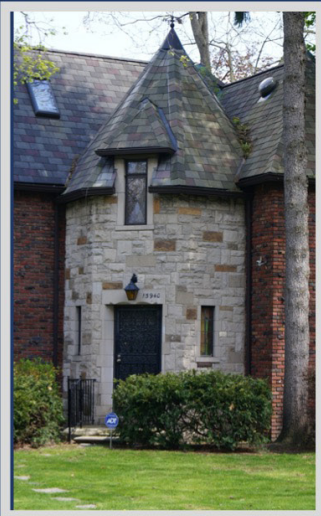
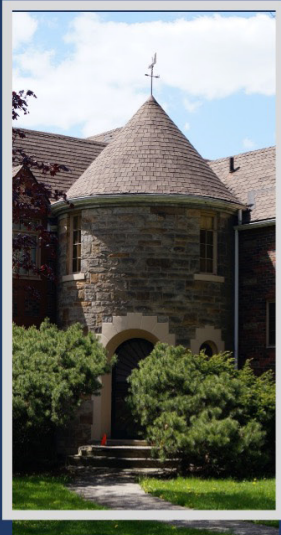
@melissapoirierrealestate



Submitted by Jim and Betty Johnson. Longtime residents Jim and Betty Johnson made good use of their springtime walks and documented some of the varied architectural elements seen around North Rosedale. Jim modeled his photo layout after the iconic “Doors of Dublin” posters.

# Turrets of North Rosedale Park

**Detroit,  
Michigan**





# Chimneys of North Rosedale Park

**Detroit,  
Michigan**

