

# The Rosedale Tattler



**Michigan  
Opera Theatre  
Sunday,  
April, 22nd**

**MEMBERSHIP**

**Membership  
Meeting  
Thursday,  
April 12th**

## In This Issue

Letter from the President page 3 • I, Too, Sing America- Michigna Opera Theatre page 4 • Buy-a-Brick Fundraiser page 5 • NRPCA is hiring page 6 • General Membership Meeting page 7 • Calendar of Events

*The Rosedale Tattler is a publication of the North Rosedale Park Civic Association. Established in 1924, the North Rosedale Park Civic Association is a community organization that promotes the interests and welfare of North Rosedale Park residents, maintains park facilities for community use, advocates for necessary public improvements, and enforces building restrictions and ordinances within North Rosedale Park.*

## NRPCA 2018 Board of Directors

**PRESIDENT:** Bill Frey • bill@nrpca.org

**VICE PRESIDENT:** Marsha Bruhn • marshabruhn@yahoo.com • 313-400-1192

**PAST PRESIDENT:** Tamara Kamara • tamara@nrpca.org

### **DIRECTORS:**

**Christopher Krupa** • Christopher.krupa@yahoo.com • 248-515-8191

**Walter Nelson** • walter@nrpca.org

**Tracey Matlock** • traceymatlock@yahoo.com • 313-399-5374

**Theresa Glenn** •

**James Martin** • james@nrpca.org • 313-410-9224

**Susan Steigerwalt** • susan@nrpca.com • 313-549-9523

**Billie Newsome** • Billie6000@aol.com • 313-618-0836

**Adriane Henry** • adriane@nrpca.org • 313-670-3399

### **TREASURER**

**John Gumbel** • TreasurerNRPCA@gmail.com • 313-531-5817

### **MEMBERSHIP SECRETARY**

**Chelsea Neblett** • chelsea@nrpca.org • 734-323-2487

### **CORRESPONDING SECRETARY**

**Marcia Bonner** • marcia@nrpca.org

### **RECORDING SECRETARY**

**BrieAnn Bell** • brieann@nrpca.org

### **BLDG. MANAGER**

**Deena Policicchio** • rentals@nrpca.org • 313-837-3416

### **PROGRAM MANAGER**

**Gloria Goodwine** • nrpcaprograms@gmail.com • 313-971-3990

### **ADVERTISING COORDINATOR**

**BrieAnn Bell** • brieannbell@gmail.com

### **TATTLER EDITOR**

**Kimberly Dorsey** • kimberly@nrpca.org • 313-595-2060

### **TECHNICAL SUPPORT**

**Dexter Slusarski** • dexter@nrpca.org

## **DMC&YOU**

### **FREE HEALTH CLASSES**

#### **LOWERING YOUR RISK OF STROKE**

Sat. May 19, 10am—

Sinai-Grace Auditorium, 6071 W. Outer Dr.

#### **HIP & KNEE PAIN SOLUTIONS**

Wed. May 9, 6pm—

Northwest Activities Center, 18100 Meyers Rd.

Thurs. May 24, 6:30 pm—

Caroline Kennedy Library-Dearborn Heights  
24590 George Ave.

Refreshments included (while supplies last).

Sign up at [dmc.org/DMCandYou](http://dmc.org/DMCandYou) or call (888) DMC-2500.

## **PIANO & GUITAR LESSONS**

For the Young and the Not-so-young

313-255-1627

### *North Rosedale Park Civic Association*

#### **Membership**

##### **Membership Dues**

|                   |      |
|-------------------|------|
| Resident .....    | \$75 |
| Non-Resident..... | \$60 |
| Business .....    | \$60 |

Pay Online At:

[www.nrpca.org](http://www.nrpca.org)

*(click on 2018 Membership Now Available)*

Make Checks Payable To:

**North Rosedale Park Civic Association or NRPCA**

Mail or Hand Deliver To:

**North Rosedale Park Civic Association**

**Attn: Membership Secretary**

**18445 Scarsdale, Detroit MI 48223-1333**

*The NRPCA is now a 501(c)(3) charitable organization.*

*Contributions and dues payments to the NRPCA are  
tax deductible under state and federal tax laws*

### **C & M Landscaping, Inc.**

**313-592-8118**

Licensed & Insured

**Free Estimates**

#### **Custom Brick Paving**

- Walks, Patios, Porches
- Steps, Retaining Walls, Drives

#### **Landscaping**

- Weekly Maintenance
- Spring & Fall Clean up
- Mulch Installation
- Landscape Installation
- Sprinkler System

#### **Tree & Shrub Care**

- Removal & Trimming
- Deep Root Fertilizing
- Micro-Injection
- Stump Grinding

# Letter from the President

Greetings, neighbors.

Welcome Spring and Reach Out: By the time you read this in the first week of April, Spring will have officially arrived and hopefully the world around us will be starting to turn greener. It is a good time of year to get out and see how the neighbors you haven't seen all winter are doing. One thing about living in North Rosedale is that we like to be in touch with our neighbors and do what we can to make our corner of Detroit a better place to live for all of us. I know that for our family this has been a great place to live because we know good people live throughout the neighborhood. If you have not experienced that aspect of North Rosedale, maybe you should reach out a bit and be pleasantly surprised by the positive attitudes in the homes around you.



**Block Clubs:** One way to reach out is to join your block club, or, if you do not have one on your block, to start one. Block club activities will vary from block to block and can include things like collective block/island clean ups; block parties (indoors or out); progressive dinners; tool sharing/work sharing networks; and child care networks or play groups. Even if you do nothing more than arrange to have a few social gatherings, exchange contact info so you can communicate when you want to and develop a system to keep your neighbors aware of what is happening on your block you will feel a lot more at home when you drive down your block. If you want to volunteer to be the designated block captain for your block, contact Clarend Webb at [clarendawebb@gmail.com](mailto:clarendawebb@gmail.com). Additionally, the block captain's network has a webpage at [www.nrpa.org/blockcaptains](http://www.nrpa.org/blockcaptains). If you visit that page, you will be able to view the Block Captains' Role and Responsibilities, the New Neighbor Welcome Flyer, and obtain other useful information such as current Solid Waste/Recycling/Yard Waste Schedule, and Important City of Detroit Numbers to Call. Alternatively, you can attend one of the block captains' monthly meetings which are always held at the Community House at 6:30 pm on the first Tuesday of the month, except for January, July and August.

**Membership:** Membership in the NRPCA is another way to "reach out" and become a part of the community around you. April is membership month, so I want to encourage everyone who has not done so to pay your 2018 dues to help support the work of the NRPCA and the operations of the community house and park. Membership in the NRPCA also opens the door to meeting a lot of great neighbors that do not live on your block but live very close by. Becoming a member and becoming active in some of our regular activities like Easter Egg Hunt, June Day, Steak Roast and many others can add another whole dimension to your appreciation of the place you call home. A few years ago, the NRPCA became a 501(c)(3) non-profit and the dues now qualify as a tax-deductible donation. The dues of \$75 per year (payable in quarterly installments on the [nrpa.org](http://nrpa.org) website) breaks down to less than \$1.45 per week and is even less if you deduct them on your taxes. On the other hand, a strong membership in the NRPCA is one of the key components for the maintaining the quality of the neighborhood. Paying our dues and working together we are able to provide a number of benefits for the entire neighborhood, such as:

- The Tattler newsletter - delivered to every home in the neighborhood and which can now be delivered by email if you sign up
- A Code Enforcement & Zoning Team that provides information on city ordinances and helps to get the City to enforce the ordinances
- The Foreclosure Prevention and Vacant Property Task Force
- Monthly Neighborhood Safety Meetings
- Neighborhood clean-up activities
- A community house and park for loads of community activities such as baseball, soccer, exercise and other classes, Boy Scouts, Girl Scouts and all the other events mentioned above.

**Volunteer and meet your neighbors:** Members who volunteer to work on various projects and committees with the NRPCA are also an important -- actually a crucial -- part of helping to keep this neighborhood a great place to live. We could not keep this neighborhood as a desirable place to live without thousands of volunteer hours every year. North Rosedale is no accident -- it is the result of a lot of effort by many people over the years.

**Upcoming Events:** To get involved, you might want to help out or simply participate in one of the following events (or other events on the monthly calendar):

Detroit Partnership Day -- Saturday April 7th at 10:00 AM -- help U of M students clean up around the community house grounds and along the Southfield service drive.

Michigan Opera Theater: -- Sunday April 22 at 3:00 at the Community House -- this presentation focusing on African American artists and athletes -- admission is free but limited to the first 160 registrants. Interested? Go to <https://goo.gl/PT1m1a> to see if there are still tickets available.

Grandmont Rosedale Baseball Opening Day -- Saturday April 28th at 8:30 AM at the Community House -- just come out and watch the festivities, it is just a fun event celebrating one of the best youth sports leagues in the city.

Motor City Makeover -- Saturday May 5 at 10:00 AM -- participate in the city-wide clean-up efforts -- more details will be made available but you can be sure that we will be working around the community house and park, as well as other locations.

Hope to see you around the Park!

## Meeting Announcement- NRPCA Board of Directors April 2018

Tuesday, April 10, 2018  
6:30 p.m. -- 9:00 p.m.

North Rosedale Park Community House  
18445 Scarsdale, Detroit, MI 48223

North Rosedale Park Civic Association Board of Directors meetings are open to the public. If you would like to be added to the agenda email President William Frey at [bill@nrpa.org](mailto:bill@nrpa.org).





# I, TOO, SING AMERICA

A Celebration of African American Artists & Athletes  
A Take Me Out to the Opera event

*An afternoon of beautiful music and compelling conversation in Rosedale Park!*

**Sunday, April 22, 2018**

**3:00 p.m.** - Performance & Panel Discussion  
**4:30 p.m.** - Reception & Opportunity to meet artists and speakers

Rosedale Park Community House | 18445 Scarsdale St, Detroit  
Register at [nrpcamioperaspring2018@eventbrite.com](mailto:nrpcamioperaspring2018@eventbrite.com)

Join Michigan Opera Theatre at the Rosedale Park Community House for *I, Too, Sing America: A Celebration of African American Artists & Athletes*. Through live music, poetry, narrative, and video, this innovative performance highlights the stories and achievements of African American artists and athletes who defied limitations and paved the way for integration in their fields. An engaging panel discussion will follow the performance where speakers, performers, and audience will consider: What has classical music traditionally meant for African American individuals and communities? How has it played a role in bridging racial divides and promoting healing? And how do we, today, move toward a fuller incorporation of those pursuits in our world?

Hosted by the  
North Rosedale Park  
Community House

MICHIGAN  
OPERA  
THEATRE

Supported by



KNIGHT  
FOUNDATION



The Summer King  
an opera by Daniel Sonenberg

*The Summer King* tells the story of Negro Leagues  
baseball legend Josh Gibson, considered one of  
the greatest baseball players of all time.

May 12-20 at the Detroit Opera House  
[michiganopera.org](http://michiganopera.org) | 313-237-7464



## GRANDpark(let) GRAND OPENING and SMALL BUSINESS SATURDAY SPRING EDITION – Saturday, May 12

Come celebrate the Grand Opening of our GRANDpark(let) on Saturday, May 12 from 2 – 8 pm! This GRDC project, in collaboration with Project 561 and the City of Detroit Planning Department, is located on Grand River between Plainview and Puritan. The park(let) will be in place for six weeks and will feature pedestrian crosswalks, outdoor seating, and art installations. Puritan at Plainview and Evergreen will be temporarily closed to all except Puritan residents. The Grand Opening will also feature local, independent artisans, a DJ, food trucks, and other business owners. For more info, contact Larissa Richardson at [lcarr@grandmontrosedale.com](mailto:lcarr@grandmontrosedale.com).

On Saturday, May 12, there will also be a Shop Small in GRANDmont Rosedale – Spring Edition along Grand River. Several Grandmont Rosedale businesses will be featured at the GRANDpark(let) Grand Opening and others will have special events at their stores. Be sure to stop by the Norwest Gallery of Art at the Grand River Annex, 19556 Grand River, Pages Bookshop, 19560 Grand River, and The Garden Bug, 18901 Grand River! For more information contact Larissa Richardson at [lcarr@grandmontrosedale.com](mailto:lcarr@grandmontrosedale.com)



## SisterFriends DETROIT

**Mentor a pregnant mom to ensure she has a healthy pregnancy and baby.**

**Join the movement!**  
Help us in our fight against infant mortality!

**To Volunteer**  
**Call 313-961-BABY(2229)**  
**[www.sisterfriendsdetroit.com](http://www.sisterfriendsdetroit.com)**

For inquiries e-mail:  
[hallat@detroitmi.gov](mailto:hallat@detroitmi.gov)





## Still Time To Order Your Brick for the New Plaza

The brick pavers are a great way to pay tribute to your family, celebrate a special occasion or honor the memory of a loved one. The 4" x 8" bricks are \$100 for up to three lines; 8" x 8" bricks are \$200 for up to five lines.

The bricks will be incorporated into an outdoor plaza adjacent to the new lobby that includes a striking, 24-foot sculpture by celebrated Detroit artist Charles McGee. The plaza is part of The Legacy Project, an ongoing effort to update the Community House and the surrounding grounds. NRPCA has almost raised the match to our \$21,000 award from the Michigan Council for Arts & Cultural Affairs for plaza construction.

To purchase a brick or for more information, contact Marcia Closson at (313) 835-1103 or [mclosson@aol.com](mailto:mclosson@aol.com). You can also go to [www.nrpca.org/legacy-bricks](http://www.nrpca.org/legacy-bricks) to make an online purchase or download a form to mail in your order.



**Roofs-Gutters-Painting-Kitchen-Bath-Remodel  
Electrical-Siding-Decks-Plumbing-Finish Bsmt  
Water Damage Repair**

### ***Pearson Construction Company***

*Serving the Residential & Commercial with Quality Building Service*

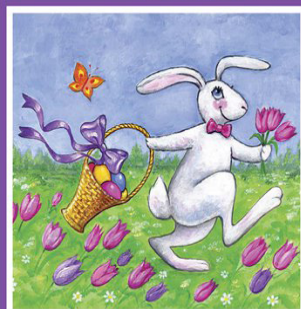
**Tyrone Pearson, President**  
**Licensed & Insured**

**313.399.9122**

**Affordable Prices**

**Senior Discounts**

### **THANK YOU GRANDMONT ROSEDALE!**



**Thank You**  
for helping to make a  
magical 2018 Easter  
Egg Hunt for the kids  
of Grandmont  
Rosedale!!

\*The Grandmont Rosedale Easter Egg Hunt is sponsored by Rosedale Park, North Rosedale Park, Minock, Grandmont & Grandmont f.



DOWLAND BACH PAGANINI WALTON SATIE ALBENIZ

*"Blissfully simple....plays with  
a gracious virtuosity."*  
-Fanfare Magazine

*"....absolutely seamless performances of  
Villa-Lobos' Gavotta-Choro and Carlo  
Domeniconi's Koyunbaba, (Turkish for  
"sheep-father"), which was particularly  
impressive due to the re-tuning of his guitar."*  
- New York Concert Review INC

*Cathedral Cultural Series presents*

## **PETER FLETCHER** **CLASSICAL GUITARIST** **Detroit Solo Recital Debut**

**SUNDAY, MAY 6, 4 PM**

Cathedral of the Most Blessed Sacrament  
9844 Woodward Avenue, Detroit, MI 48202

Email: [sacredmusic@aod.org](mailto:sacredmusic@aod.org)

Website: [detcathedral.org](http://detcathedral.org)

313-237-5782

**Entrance fee \$20**



# We're HIRING

## Join the NRPCA Team

To apply, please come to Community House during open hours starting Thursday, March 8, 2018. Please bring a copy of a résumé and be prepared to complete an application. All qualified individuals must be able to legally work in the United States of America. A criminal history does not preclude employment. Minorities are encouraged to apply as are residents of North Rosedale Park and neighboring communities. North Rosedale Park Civic Association does not discriminate based on age, race, gender identity,

**House Rep :** 2-3 openings; Up to approximately 6 hours per month; \$9.25/ hour A House Rep is a liaison between NRPCA and Community House renters and guests during the actual rental. Most rentals are weekends (afternoons and evenings), but some weekday mornings and evenings are available. The amount of hours per month will depend on number of rentals and number of available House Reps for the month. Monthly schedules will be known at the end of the preceding month but may be subject to change. A House Rep must have attention to detail; customer service experience; ability to complete paperwork in English; ability to traverse building (two floors with stair access only) parking lot, and outside park multiple times during the event; be dependable; and have effective problem-solving and communication skills. This is a highly independent position during the event and House Reps must be accessible to renters at all times. The goals for events are to cause renters to feel good about choosing the NRPCA Community House and to protect the Community House and grounds from damage.

**Assistant Custodian** 1-2 openings; Up to approximately 8 hours per month; \$9.25/ hour The Assistant Custodian will support the Custodian for rental set-ups and tear-downs (including janitorial activities) as needed and cover for Custodian when he/ she is not available. Most rentals are weekends (afternoons and evenings) with set-ups and tear-downs occurring in the mornings and late evenings. Some weeknight activities may occur. The amount of hours per month will depend on number of rentals. Monthly schedules will be known at the end of the preceding month but may be subject to change. The Assistant Custodian must have attention to detail; ability to work as part of a team; ability to complete paperwork in English; ability to traverse the building (three floors with stair access only), parking lot, and outside park multiple times; the ability to lift and carry items of at least 20 lbs.; be dependable; and have effective problem-solving and communication skills. This is a moderately independent position. The goals are that the room set-up and tear-down be done efficiently and cooperatively with the renter so that each renter feels special and that the building is well-maintained.

Security Services 1-2 openings; Up to approximately 60 hours per month; \$15/ hour

This opportunity is available for an individual and/ or a company. Security services are provided during NRPCA Community House rentals. Most rentals are weekends (afternoons and evenings), but some weekday morning and evening rentals occur. The amount of hours per month will depend on number of rentals. Monthly schedules will be known at the end of the preceding month but may be subject to change.

Security Service Providers must have attention to detail; ability to work as part of a team; ability to complete paperwork in English; ability to traverse the building (two floors with stair access only), parking lot, and outside park multiple times; be dependable, and have effective problem-solving and communication skills. Responsibilities for this position will mostly be outdoors and involve maintaining the security and orderly parking in the lots. Attire for protection from the elements is not provided by NRPCA. This is a highly independent position and Security Service Providers must be accessible to and interact with a positive manner with renters, guests, members, and House Reps at all times. Security Service Providers must be able to direct traffic and manage parking within the lots to maximize use of the available parking areas and monitor comings and goings from the two main entrances.

## Quality Cement Work

- Driveways, walkways, porches, garage floors.
- Tuck pointing, foundations, drainage.
- Sewer lines replaced.

**Free Estimates – 313-617-0056**



**JERRY'S**  
**DRYWALL PLASTER & PAINTING SERVICE**  
 A Business that CARES about their Workmanship

**DRYWALL INSTALLATION  
 DRYWALL REPAIR  
 PLASTER REPAIR  
 PAINTING  
 WALL PAPER REMOVAL**

**FREE ROOM PAINTING WITH 8  
 SQUARE FOOT OF DRYWALL  
 OR PLASTER SERVICE.**

**20%**  
**DISCOUNT FOR SENIORS**  
**30 Years of  
 Experience**

**FREE Estimates Call  
 (313) 864-3398 OFFICE  
 (313) 258-7744 CELL**

## Behind the Footlight SHREK, The Musical

by Roger Loeb

Shrek, everyone's favorite ogre, is coming to the Redford Theatre in the form of Park Players' spring musical. He will be accompanied by his friend, the wisecracking Donkey (played by our own lovable, wisecracking Jonathan Jones), the feisty princess Fiona, the evil, psychologically-maimed Lord Farquaad, a real boy Pinocchio, Gingy a cookie with an attitude, and many other fairy tale misfits.

So to prepare you for this auspicious theatrical treat, we wish to share with you several things you (probably) did not know about Shrek.

1. In Yiddish, the word shrek means "monster". All our dear Shrek wants to do is live in his swamp in peace; yet his very name undermines this mission. Deep!
2. In German, the equivalent word is "schreck" which means fright or terror. It's a heavy burden for our little green buddy.
3. Speaking of our "little" green buddy, Shrek is variously reported to be seven or eight feet tall.
4. Shrek was originally from Canada with a strong Canadian accent. Only later did his origin (and his accent) switch to Scotland.
5. The early conception of Shrek was as a moody teenager living with his parents. He kept raw meat in his room and slept by a rubbish bin in the middle of an alleyway.
6. The villain, Lord Farquaad, in his earlier incarnation, had a plan to turn the village of Duloc into one large supermarket.

Now that you are a well-informed Shrekie, it's time to put on a pair of tiny green ears and order your tickets. Show dates are Friday, April 27, Saturday, April 28, Sunday (matinee), April 29, Friday, May 4, Saturday, May 6, and Sunday (matinee), May 6. You may call the box office (734-752-1456), go on Facebook @ ParkPlayersDetroit, or use our website: parkplayers.org. For this show, you can comfortably bring Grandma Rose, weird Uncle Albert, and all of the kids (at least the ones who are able to sit quietly through a mesmerizing musical). As Gingy concl

## General Membership Meeting



**North Rosedale Park Civic Association  
General Membership Meeting  
Thursday, April 12, 2018  
7:00 p.m. – 9:00 p.m.  
at the Community House**

## TAG'S TAXES LLC

PROFESSIONAL AND QUALIFIED



**Theresa**  
"It's My Time to Shine"

Phone: 313.463.8943  
Fax: 313.740.7389  
tagstaxesllc129@gmail.com

**Appointment Only • Pick Up and Delivery Available**

P.O. BOX 435 • SOUTHFIELD, MI 48037



## Rosedaledale Soccer League Registration

Fall Soccer Season - April 1, 2018 - April 30, 2018.  
Early Registration Fee \$85.00.  
Regular Registration - May 1, 2018 - June 30, 2018.  
Regular Registration Fee - \$105.00.

On Site Registration - First 3 Saturdays in June  
10 a.m. to 2 p.m.  
@ The North Rosedale Community House

This is a Co-ed recreational soccer league for kids ages 4 -17.

For additional information visit [www.rosedalesoccerleague.org](http://www.rosedalesoccerleague.org)  
or call Stacie Harris at 313-405-3314  
You can also contact Stacie Harris at 313-405-3314 for information.





# Community Events

## March 25 - May 5

\*does not include private Community House Rentals

| SUNDAY<br>25 March                           | MONDAY<br>26 Trash   | TUESDAY<br>27   | WEDNESDAY<br>28                                 | THURSDAY<br>29<br>Buy A Brick<br>Deadline            | FRIDAY<br>30                  | SATURDAY<br>31 Easter Egg<br>Hunt<br>10am - 12pm |
|--|--|---|---|--|-------------------------------|--|
|  |  |   | Walking Club<br>6pm<br><br>Zumba 6 pm           |  | Walking Club<br>6pm           |  |
| 1 April<br>Easter                            | 2 Trash &<br>Recycling<br><br>Walking Club<br>6pm<br><br>Boy Scouts<br>6:30pm  | 3 Bulk<br><br>Hustle5:30pm<br><br>BlockCaptains<br>6:30pm | 4<br><br>Walking Club<br>6pm<br><br>Zumba 6 pm  | 5  | 6<br><br>Walking Club<br>6pm  | 7  |
| 8  | 9Trash<br><br>Walking Club<br>6pm<br><br>Girl Scouts<br>6:30pm                 | 10<br><br>Hustle 5:30pm<br><br>Board Meeting<br>6:30pm    | 11<br><br>Walking Club<br>6pm<br><br>Zumba 6 pm | 12<br><br>General<br>Membership<br>Meeting<br>7:00pm | 13<br><br>Walking Club<br>6pm | 14   |
| 15   | 16 Trash &<br>Recycling<br><br>Walking Club<br>6pm<br><br>Boy Scouts<br>6:30pm | 17 Bulk<br><br>Hustle5:30pm                               | 18<br><br>Walking Club<br>6pm<br><br>Zumba 6 pm | 19<br><br>SafetyMeeting<br>6:30pm                    | 20<br><br>Walking Club<br>6pm | 21   |
| 22<br><br>I, Too, Sing,<br>America<br>3:00pm | 23 Trash<br><br>Walking Club<br>6pm<br><br>Girl Scouts<br>6:30pm               | 24<br>VacantProperty<br>10am @ ABD<br><br>Hustle5:30pm    | 25<br><br>Walking Club<br>6pm<br><br>Zumba 6 pm | 26   | 27<br>Walking Club<br>6pm     | 28   |
| 29   | 30 Trash &<br>Recycling<br><br>Walking Club<br>6pm<br><br>Boy Scouts<br>6:30pm | 1 May<br><br>Hustle5:30pm<br><br>BlockCaptains<br>6:30pm  | 2<br><br>Walking Club<br>6pm<br><br>Zumba 6 pm  | 3  | 4<br><br>Walking Club<br>6pm  | 5  |

### North Rosedale Park Civic Association Community House

18845 Scarsdale  
Detroit, MI 48223  
(313) 837-3416 • [www.nrPCA.org](http://www.nrPCA.org)

Monday, Tuesday, Wednesday & Friday 10 a.m. - 1 p.m.  
Thursday 3 p.m. - 6 p.m.  
Closed Saturday & Sunday

The Rosedale Tattler