



Rosedale Park News

Serving a Friendly Neighborhood

Volume LXXI • Number 5

Rosedale Park • Detroit, Michigan 48223

September/October 2013

www.rosedalepark.org

RPIA Board Slate of Nominees

See Candidate Statements on page 14.

The RPIA Nominating Committee, chaired by Board Member Dorothy Roman, has submitted the following slate for the election of 2014 officers and board members:

PRESIDENT	Stacy Pugh	one year term - 2014
1st VP	Dorothy Roman	one year term - 2014
2nd VP	Donna Wilson	one year term - 2014
Treasurer	Frank Raben	one year term - 2014
Board Member	Jerry Cullors	three-year term - 2014-2016
Board Member	Leon Jackson III	three-year term - 2014-2016
Board Member	Thelma Brown	three-year term - 2014-2016
Board Member	Pam Weinstein	one-year term - 2014
Board Member	VACANT	one-year term - 2014
Board Member	VACANT	one-year term - 2014

"We invite any resident interested in serving as a board member in one of the remaining vacant positions to contact us directly," explained Committee Chair Dorothy Roman. The Nominating Committee can be reached via the RPIA Hotline at 313-927-1089 or by sending an email to aa7636@wayne.edu.

In addition, anyone wishing to nominate someone for one of the positions listed above can do so by obtaining the signatures of 10 members supporting the nominee, with the nominee's approval, of course. These written nominations should be submitted to the Nominating Committee Chair by October 1 (see above). The names of all persons nominated shall be published in the November/December issue of the ROSEDALE PARK NEWS.

September RPIA General Membership Meeting

This month's general membership meeting is shaping up to be informative and exciting.

- A spokesperson from Detroit Eviction Defense Committee will give an overview of the foreclosure crisis in our city. There are numerous steps home owners can take to keep from losing their homes.

- There will be a report on the exciting developments at Stoepel Park: the improvements so far and what's in store for the future.
- State Representative Rashida Tlaib, or a representative from her office, will explain pending legislation (HB 4594 R.Tlaib) to curb scrap metal thefts.
- Finally, the new slate of candidates for the RPIA board will be presented.

Mark your calendars for Tuesday, September 10 at 7 PM at the North Rosedale Park Community Center.

IN THIS ISSUE

Local Little League Hosts Tournament	2
Job Posting	2
Block Captain's Corner	3
Island Beautification Awards	5
Photos of Block Parties	6-7
New Coffee Shop on Grand River	8
News from GRDC	9
Quality of Life Forum	10
Learn About Bill to Stop Scrappers.....	11
Wood Chips at Flintstone Park.....	12
Ken Lewis Obituary	13
Officer and Board Candidate Statements.....	14
RPIA Contact List	15
Calendar of Events	15

General Membership Meeting



Tuesday, Sept. 10 at 7 PM

North Rosedale Park Community House

18445 Scarsdale

(off Bretton Drive at Glastonbury)

All Residents Welcome!

Editor's Note: The President's Message will return in the November/December issue of the ROSEDALE PARK NEWS.

Local Little League Hosts Tournament at Stoepel

New fencing. New walking track. Renewed spirit.
Welcome to Stoepel Park.

The Detroit Tigers liked the new energy so much they asked the Rosedale Grandmont Little League to host the girls' softball and 14-under baseball portions of the Hometown Championship on Aug. 1-4.

Guess who coordinated the tournament, sponsored by the Detroit Tigers and the Baseball Tomorrow Fund? Rosedale Park's own Jennifer McNeil. "I was really excited to be back at Stoepel where I played," said

McNeil, daughter of longtime resident and current coach in the league, Randy McNeil.

Coaches and players from around our area who came to play in the tournament were impressed by the excellent conditions of the four diamonds at Stoepel.

Pats on the back to the Rosedale Grandmont neighbors Chris Gregory, Dwight Blakey, Marcus Harris and other coaches and officials for their hard work maintaining the fields throughout the tournament.



Jennifer McNeil, left, with her father, Randy.



The Rosedale Grandmont Peaches.

HELP WANTED: Administrative Assistant for RPIA

The Rosedale Park Improvement Association seeks applicants for the position of administrative assistant. This independent contractor position pays \$100/month; contract is generally for a 12-month period and is renewable.

The Administrative Assistant works closely with the RPIA officers and board members to carry out these specific duties:

- Send out email notices of monthly board meetings, agendas, and reminders, as well as providing hard copies at board meetings
- Issue notices of general membership meetings via e-mail; assist the president and executive team in compiling agendas for meetings as needed.
- Be in attendance at the quarterly general membership meetings to greet residents at the door and accept any dues payments.
- Record and maintain minutes of all monthly board and quarterly membership meetings, submitting drafts to board members for approval following each meeting.
- Submit brief summaries of approved board minutes for the RPIA newsletter and full minutes to the RPIA web master, for posting on the RPIA web site.
- Retrieve messages from the RPIA hotline and forward to appropriate board members and officers for follow-up.
- Write and mail or email correspondence as requested by the president or other board members to complete RPIA board business.

Submit a cover letter and your resume to RPIA, P. O. Box 23113, Detroit, MI 48223.

Block Captains' Corner



Neighborhood Watch – what does it mean to you today? Quite a bit of attention has been given to this program over the past year for a number of reasons; however, how many of us even know when it started and why?

Last year the National Neighborhood Watch Program celebrated 40 years.

NATIONAL HISTORY

Neighborhood Watch is one of the best known and oldest concepts for crime prevention in history. While the modern day concept of Neighborhood Watch was implemented in the late 1960s in response to an increasing crime rate in communities, its roots in America can be traced back to the days of Colonial settlements when night watchmen walked the streets of those early communities.

Due to an increasing number of burglaries in rural and suburban residential areas, sheriffs and police chiefs around the country were requesting a crime prevention program that would **incorporate citizen involvement**. The National Sheriffs' Association (NSA) took it to the next level when they made this concept a national initiative, calling it the National Neighborhood Watch Program (NNWP), which officially debuted in 1972. It originally focused on arming citizens with information on how to make a residential property more secure and less vulnerable to burglary. Later, the NNWP evolved to promoting and assisting the establishment of Neighborhood Watch programs where community members could work with the local police force to reduce crime in their neighborhoods.

Over the years Neighborhood Watch programs have become active and effective tools in promoting safety and security in residential communities nationwide.

By Stephanie A. Young

DETROIT HISTORY

I can remember watching Detroit Police Officers post the Neighborhood Watch sign at the end of my block. It had "Griggs Street Block Club" etched on it. It made me feel special and safer because not all the blocks in the Schultz Community Council area had these signs. That was close to 40 years ago and though the Police Department can no longer afford the signs, they are still actively committed to the concepts of Neighborhood Watch programs as evidenced by their support and partnership with the Grandmont Rosedale Development Corporation's Community Security Program, Rosedale Park Improvement Association Radio Patrol, and various electronic safety communications from Grandmont and North Rosedale Park, just to name a few.

Block Captains are encouraged to keep the Neighborhood Watch torch burning. Quick tips you've heard before that never grow old:

- **Keep your front and side porch lights on.** It's hard for neighbors to "watch" what's going on if your house is dark or dimly lit.
- **Know your neighbors and make sure your neighbors know you.** Block captains are the 'go to' neighbors. When a car was being stripped on my block, the neighbors called me at 4:30 am (after calling 911) and that's just what they should have done. It's important for folks to know they are not alone.
- **Know the cars that belong on your block.** One of the latest schemes involves stealing a vehicle and parking it in front of a house for few days before coming back and stripping it in the early morning hours. Check with your neighbors to see if they know who the car belongs to, if they don't report it to the police.
- **Enjoy Rosedale Park!** In spite of the madness that seems to find us periodically, we still live in one of the best neighborhoods in Detroit. It's been said before and still rings true today ... **city living is good, but it's best in Rosedale Park!**



PANDA

Delicious Chinese Food to Take Out

OPEN 7 DAYS

M-Th 11a-11:30p

F-Sat 11a-12:30a

Sun 12n-11:30p

Special Lunch Prices
12 Shrimp/\$2.50 every day

In Grandland behind Metro Foodland • (313) 837-3771

COMPUTERS

\$200

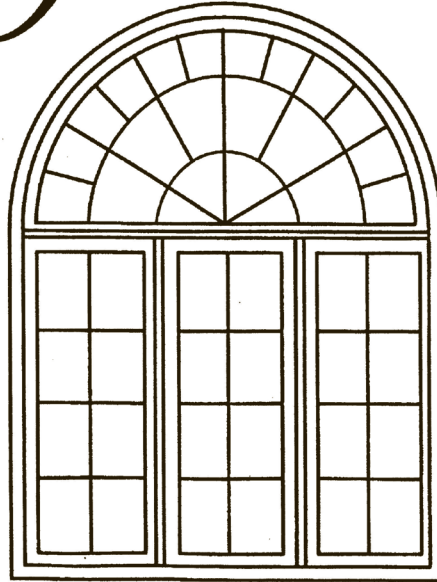
SAVE \$

(313) 218-4888

www.callwillie.com




Kelly Window



MANUFACTURING

Historic Window Specialist
Custom Made Wood Windows

Built any size, any shape, and in any color

15000 Linwood St.
Detroit, MI 48238
(313-861-6910)

2013 Island Beautification Awards

By Judith Rogan, Rosedale Park Garden Club

Congratulations Rosedale Park residents! The 2013 island planting season has shown a significant increase in participation in the care and upkeep of our beautiful islands! Park residents are obviously proud of their neighborhood and have begun to step up to keep our islands maintained as the beautiful specimens they were meant to be.

This year, two islands stood out as strong contenders for 1st place. Both islands were listed as "honorable mentions" in 2012; both are very long islands; both are on the same street; and, both have been selected as the 2013 1st place winners!

1ST PLACE--ROSEMONT (FENKELL-CHALFONTE):

This beautiful island spans almost the entire length of the block. Yet the grass was chiseled like a golf course! It takes great effort to maintain such a long island.

Rosemont, between Fenkell and Chalfonte.



1ST PLACE--ROSEMONT (CHALFONTE-EATON):

This is another long island with beautiful mini roses and a well manicured lawn. One of the judges actually got a chance to meet the block residents at their annual picnic.



Rosemont residents (Chalfonte to Eaton) enjoy their island during a block party.



Rosemont, between Chalfonte and Eaton.

2ND PLACE--WARWICK (FENKELL-CHALFONTE)

Also, the coveted Winners Circle plaques will require additional effort to be earned. Islands selected as first place winners will have to maintain excellent standards through the next two planting seasons to receive their plaques.

A new category for "Creativity" was added to the judging this year. A selected island will also be honored for creative elements added to enhance the beauty of their island. This year's award goes to Artesian (Keeler-Grand River), whose

residents shaped a large lilac-colored "A" into both of the end flower beds.

Twelve islands were selected to be honored as "Much Improved." The title "Most Improved" had to be reworded to "Much Improved" to accommodate the numerous islands that have shown significant improvements from last year to the current year. All were not necessarily pristine. For example, some showed signs of "no life" last year, but were beginning to have lawns mowed or some planting. Any islands that had obvious improvements going either from "nothing to average" or from "average to pristine" are being recognized as "Much Improved. They are:

Rosemont (Eaton-Lyndon)	Artesian (Lyndon-Eaton)
Penrod (Eaton-Chalfonte)	Artesian (Fenkell-Keeler)
Penrod (Chalfonte-Fenkell)	Warwick (Fenkell-Keeler)
Faust (Chalfonte-Fenkell)	Warwick (Keeler-Midland)
Greenview (Chalfonte-Fenkell)	Piedmont (Midland-G.R.)
Grandville (Midland-G.R.)	Glastonbury (Lyndon-Eaton)

All of the winning islands will be honored with prizes and gifts at the annual RPIA banquet in January, so please be sure that a block representative is in attendance.



Most Creative award-winner, Artesian between Keeler and Grand River.

Law Offices

Haroutunian Licata Haroutunian, PC

Wills, Trusts, Probate, Divorce, Litigation, Real Estate

Edward L. Haroutunian
Krista Licata Haroutunian

Susan Licata Haroutunian,
of counsel

248-594-9071

email: ELH@HLHPC.COM

Free Consultation

✱ Rosedale Park Residents since 1972 ✱

Howd Plastering

We Go To The Wall For You
Specializing in Plaster & Drywall Repair

Michael Howd

4th Generation Master Plasterer

Metro Detroit Area
Livonia-Redford-Suburbs
734-772-3656
Howdplastering@yahoo.com



Neighbors Share Good Times at Summer Block Parties

Artesian



Faust



Glastonbury



Warwick



NEED A NEW NEIGHBOR KIT?

Kits are available from coordinator,
Bill Nolan,
who can be reached at 313-838-9035 or
sweetgrass59011@gmail.com.

More than Coffee Brewing at Always Brewing Detroit

Since Amanda Brewington was 17, she wanted to open up a coffee shop where people could listen to music and hang out.

That dream became a reality – after a successful pop-up last November – when she opened Always Brewing Detroit in June. It all started when Brewington wrote a paper for her senior honors English class at Romulus High School about her entrepreneurial dream.



Amanda Brewington

"I have great memories of hanging out with friends at coffee houses in Ann Arbor during high school and in East Lansing when I attended Michigan State," said Brewington. "I saw some of the best musical groups in small coffee houses."

After graduating from MSU with degrees in audio production and communication, she worked as a production assistant for a small company in Lansing, trying to save money to open a small business. In 2011, she quit her job and moved to Detroit.

"My dad grew up in Detroit and I wanted to open a business here," said Brewington, 28, who lives near Cadillac Square in downtown Detroit. "I remember driving all over the city looking for a building for a coffee shop."

She started waiting tables at Joe Muer Sea Food at the Renaissance Center and worked on a business plan, taking a 10-week business class from the Michigan Small Business and Technology Development Center in 2012. More help came from the business incubator Tech Town.

CONNECTIONS TO GRDC

GRDC's executive director Tom Goddeeris told Derrin Leppek of Tech Town that the Rosedale Grandmont neighborhoods sure could use a coffee shop where residents could meet and hang out. Leppek knew just the person.

Brewington and Goddeeris met and scouted out storefronts in the area. The former Neighborhood City Hall at 19180 Grand River seemed like a good fit.

In late 2012, Brewington was ready to take the plunge, opening Always Brewing Detroit as a pop-up from Nov. 26 to Dec. 21. "It was very successful, so now I needed to find funding to open up permanently," she explained.

Tech Town and the Detroit Micro-enterprise Fund came to the rescue, and the transformation of the former Neighborhood City Hall began to take place. It took months of work to get the space up to code and finally on June 21, Always Brewing Detroit opened.

"I got help from my dad, who did most of the work on the building, and my boyfriend Beau (Glazier) works with me especially the few nights a week while I'm working at Joe Muer," Brewington said.

VARIETY OF DRINKS, FOOD, ENTERTAINMENT

Always Brewing offers a wide variety of drinks, including coffee, of course, espresso, cold-brewed coffee, hot tea, iced black tea, mixed berry and Vernors ginger ale, raspberry-mint spritzer, strawberry-basil lemonade and Mexican Coke.

And there's food: a variety of rotating fresh pastries, wraps, salads, parfaits, fruit cups and granola.

Events: Open mic every Thursday, beginning at 7 PM; game night on the first Tuesday of the month; craft night on the third Tuesday of the month.

Upcoming events: Food Lab Detroit on Sept. 24th around 7 PM; Clash of the Cupcakes (neighbors bring in cupcakes to decorate, then judges pick winners); periodic movie nights (check Facebook and Twitter).

Soon: Groups of 5-6 people can sign up for a private room for meetings.

For Always Brewing updates, send Amanda an email (amanda.brewington@gmail.com) and follow them on Facebook (alwaysbrewingdetroit.com) and Twitter ([@brewingdetroit](https://twitter.com/brewingdetroit)).

WE'RE OPEN!

See what's brewing in your neighborhood.



ALWAYS BREWING DETROIT

.....
Coffee & Community

19180 Grand River Ave.
Detroit, MI 48223
313 879 1102
coffee@alwaysbrewingdetroit.com
alwaysbrewingdetroit.com

M W F 10am - 6pm **4th Saturday**
T Th 10am - 10pm 9am - 12pm



KIDS' DAY AT NORTHWEST DETROIT FARMERS' MARKET ON SEPT. 12 – This year's annual RITE AID Kids' Day at the Northwest Detroit Farmers' Market promises to be the best one yet! There will be bouncers on the church lawn and face painting – free farmers' market t-shirts to the first 100 kids - and free bike helmets to the first 100 kids, courtesy of AAA Michigan – should be a great day!

To cap it all off, Chef Antonio will be on hand to do a cooking demonstration of healthy recipes specially geared to kids – learn to prepare fruits and vegetables in ways that will appeal to your youngsters!

We Take Plastic – All Kinds!

The Northwest Detroit Farmers' Market accepts credit and debit cards and the Bridge card, as well as Project FRESH and Market FRESH coupons. The market also offers the highly popular Double Up Food Bucks program for Bridge card users, which matches up to \$20 of a Bridge card purchase with an additional FREE \$20 in Double Up Bucks, for the purchase of Michigan-grown fruits and vegetables.

For more information, and to volunteer to help at the market, contact Pam Weinstein at 313-387-4732, ext. 103, or pweinstein@grandmontrosedale.com.

RENOVATED HOMES AVAILABLE SOON

– GRDC is ready to begin renovations on nine vacant homes in the Grandmont Rosedale community. These homes will be transformed from neighborhood eyesores into neighborhood assets, with funding provided by the City of Detroit Neighborhood Stabilization Program (NSP). In addition to getting a beautifully renovated home, homebuyers will also receive down payment assistance and free homebuyer counseling to insure that they get off on the right foot. To qualify to purchase a



home under this program, homebuyers must meet the following requirements:

- Have an annual household income at or below 120% of the area median income (see chart below)
- Be pre-approved for a mortgage with a reputable mortgage lender
- Complete 8 hours of pre-purchase homebuyer counseling
- Make a down payment equal to no less than 1% of the purchase price from your own funds.

For additional information or to view a listing of homes to be renovated, visit the GRDC web site at www.grandmontrosedale.com.

NSP Program Income Limits

Household Size	Maximum Income
1 person	\$54,120
2 person	\$61,920
3 person	\$69,600
4 person	\$77,280
5 person	\$83,520
6 person	\$89,760
7 person	\$95,880
8 person	\$102,120

JOIN THE CRIME ALERT! Want to know what's going on around you? Join the GRDC Crime Alert system and you'll get email messages to update you.

The GRDC Community Security Program's staff monitors and

sends out email crime alerts as reported by community residents about recent suspicious or criminal incidents or activities. Our goal is to provide timely information to residents and when possible and appropriate, to offer crime prevention strategies and reminders that may help keep us safer in the future.

To join the Grandmont Rosedale Crime Alert system, send an e-mail request to grandmontrosedalecrimealert@googlegroups.com. And please share this invitation and e-mail address with other neighbors and friends who also live in the Grandmont Rosedale area.

GET THE GRDC E-MAIL BLAST!

– Every Wednesday morning at 11 AM, GRDC sends out an electronic newsletter to let everybody know what's going on in our neighborhood. Don't miss out on the latest! If you want to know what's happening, send us your e-mail address. We'll add you to our electronic mailing list and send you information of interest to the neighborhood. Send an e-mail to info@grandmontrosedale.com and ask to be added to the list.

Michael C. Hudgins, D.D.S.
GENERAL DENTISTRY

19001 GRAND RIVER AVENUE
DETROIT, MI 48223

TELEPHONE (313) 838-6679



Quality of Life Forum Planned for Sept. 28

In September 2012, the Grandmont Rosedale neighborhoods adopted a three-year strategic plan for improving the quality of life in our community. Now it's time to report on the first year's progress toward implementing this plan and to set priorities for year two of implementation. A community-wide Quality of Life Forum, to be held on Saturday, September 28, will provide an opportunity for that review and reflection.

"It is amazing how much we have already been able to accomplish," said Becki Kenderes, Program Manager of the Building Sustainable Communities Program. "We have a lot to celebrate, but also much work that still needs to be done." The Building Sustainable Communities Program is funded through a generous grant from the Detroit Local Initiatives Support Corporation.

FORUM DETAILS

The forum, to be held at New St. Paul Tabernacle Church, 15340 Southfield Service Drive, runs from 9 AM - 2 PM and includes a complimentary continental breakfast and lunch. Featuring short presentations about the many activities, programs, and task forces included in the community's Quality of Life Plan, the forum will also provide opportunities for residents to give feedback

Grandmont Rosedale Quality of Life Forum

Saturday, Sept. 28

9 AM - 2 PM

New St. Paul Tabernacle Church
15340 Southfield Service Drive

regarding plan goals and to get directly involved in improving the community.

VOLUNTEER RECOGNITION

"A special part of the day's program will include recognition of some of the key volunteers who are making a big difference in the Grandmont Rosedale community," added Kenderes. "It is impossible to overstate the contributions made by so many dedicated residents."

All area residents, business owners, and other stakeholders are invited to attend. For more information and to RSVP to reserve your seat, contact Wilsie Calhoun at 313-387-4732, ext. 100 or info@grandmontrosedale.com.





Cheryl V. Davis
Managing Broker

Cell: (313) 477-4564
Office: (248) 593-9494 ext. 41
Office Fax: (248) 593-9696
cheryld@rrmgus.com
www.rrmgus.com

**ROBINSON REALTY
& MANAGEMENT GROUP**

Additions.Kitchens.Garages Vinyl Siding & Aluminum Trim
Replacement Windows.Doors.Roofing
Serving all your home improvement needs

BG & SON HOME IMPROVEMENTS

734-420-2819

Bob Grutza
734-216-5943

Brian Grutza
734-564-7679

Licensed .. Insured

BGHomeimprovement@gmail.com

Bgandsonhomeimprovement.com

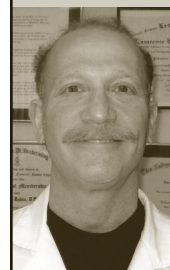
Rosedale Veterinary House Calls

Andrew A. Benigna, D.V.M.
Park Resident

Surgery ♥ Hospitalization ♥ Emergency Services
Call 328-8110

Dr. Lawrence Rubin

Diplomate, American Board of Podiatric Surgery



FOOT & ANKLE SPECIALIST SINCE 1979

Treating all foot & ankle problems
Medical • Surgical • Orthopedic • Diabetic Care

18530 Grand River, Detroit • (313) 273-9400
2 blocks west of the Southfield Freeway

Scrap Metal Reform at Neighborhood Safety Meeting on Sept. 26

If you know someone who has had their catalytic converter or their air conditioner stolen, you are familiar with scrap metal theft. This type of crime is not just an urban/Detroit phenomenon -- farmers are losing their tractors and irrigation systems, while cities around the state, not just Detroit, are losing street light copper wiring, manhole covers, and railroad tracks. All of these items are being taken by scrap metal thieves.

A bi-partisan coalition of Michigan state representatives recently introduced a package of reform bills to help reduce scrap metal theft and its negative impact in our

city and our state. Join us at the next neighborhood safety meeting on **Thursday, September 26 at 6:30 PM**, when our guest speakers will be **State Rep. David Nathan** (D-Detroit, District 8) and **State Rep. Rashida Tlaib** (D-Detroit, District 6), among the co-sponsors of the reform bills. Nathan and Tlaib will bring us the latest news on their efforts to get the bills passed.



SUPPORT THE REFORM BILLS: SIGN THE PETITION

Every Grandmont Rosedale resident can get involved -- it's easy. Just sign the petition in support of the reforms recently launched by the Special Assessment District (SAD) City-Wide Coalition. Go to the Change.org petition at <http://chn.ge/1bS2Lem> or use the QR code below, if you have a Smartphone.

Neighborhood safety meetings are open to the public, held the 4th Thursday of the month, at the North Rosedale Park Community House, 18445 Scarsdale. For more information or to suggest a safety or crime prevention topic, please contact Karen Johnson Moore, Community Security Program Manager at 313-387-4732, ext. 110 or kmoore@granmontrosedale.com.

Al Baumgardner
Co-Owner

Jim Baumgardner
Co-Owner

BAUMGARDNER MECHANICAL, INC.
Heating, Cooling, Plumbing & Electrical
24850 W. McNichols
Detroit, MI 48219

Licensed & Insured
#71-04661

(313) 537-1600
Fax (313) 537-2801

PROMPT • PROFESSIONAL • COURTEOUS

Need help with your lawn?
Call 1-888-4-LAWN HELP
(888-452-9643)

When it comes to creating thick, green lawns, depend on Greener Still, Inc. Our professional programs and experienced technicians can give you a lawn your whole family will enjoy. And, since we're a local company, we get to know you and your individual lawn needs. Depend on us to deliver what your lawn really needs...when it needs it...all season long.

- Fertilization/
Weed Control
- Aeration/Seeding
- Expert Tree Care:
Removal, Trimming,
Spraying & Feeding
- Insect Control
- Sprinkler System
Installation/Service

Call Greener Still, Inc. today
for a personal, no-cost evaluation of your lawn care needs.



greener still inc. ...a grOWing concern

TURF AND TREE EXPERTS SINCE 1965

Toll-free 1-888-4-LAWN HELP
(888-452-9643)

Major credit cards accepted



**Northwest Detroit
FARMERS'
MARKET**

ORGANIZED BY GRANDMONT ROSEDALE DEV. CORP.



Fresh, Local Food!

Join us for our 8th season of good food and fellowship! You can buy fresh, locally grown produce, right here in our neighborhood. Our vendors offer fresh Michigan fruits and vegetables, baked goods, local honey, teas, granola, dips, coffee, and more!

Every Thursday, 4-8 PM
June 6 – Oct. 10, 2013

Bushnell Congregational Church
South Parking Lot

15000 Southfield Service Drive
At the Grand River/Fenkell Exit

Underwritten by



For more information, call Pam
Weinstein, 313-387-4732, ext 103

Neighbors Banish Mud Beneath Flintstone Tables and Benches

By Pam Weinstein

The recent bout of rainy weather has been great for our gardens and lawns, but not so great for our neighborhood park at Rosemont and Acacia, often known as Flintstone Park. The ground beneath the picnic tables and park benches began to fill up with water, creating plenty of mud puddles that often made the tables and benches un-usable by residents wishing to relax in their neighborhood green space.

The solution? Woodchips. Lots and lots of woodchips.

NEIGHBOR DONATES WOODCHIPS

Ashton neighbor Percy Warmack, owner of Inner-City Tree Service, a tree trimming and tree removal business, generously agreed to donate a substantial pile of woodchips for the task. Next step? Borrow plenty of wheelbarrows, shovels, pitchforks, and rakes from the Grandmont Rosedale Community Garden, so we would have tools to use to complete our task. But how to get the tools to the park? We asked Piedmont neighbor Ron Patnaude to bring his van over to haul them from the garden on Archdale over to Flintstone (and of course, take them back, once we finished up).

MOBILIZE THE NEIGHBORS

Hmmm...what's missing now? Oh yeah – muscle power! Time to mobilize the neighbors to come out and shovel the woodchips into wheelbarrows, transport, and then

dump them out beneath the tables and benches. Last step: use the rakes to spread the chips evenly around the various muddy areas. Answering the call to take action were several Flintstone regulars, including Nancy Bitzarakis, Jacquie Carson, Jim Dwight, Wanda Edwards and granddaughter, Jeannie Rem, Jane Phillips, Ulysses Freeman and Grandmont neighbor Julie Janusch, who stopped by on her walk to lend a hand. It was great to welcome a new Rosedale neighbor, Trevor Layton, with his one-year old son, Leandro. Several Rosedale teens, Martin and Mia, also pitched in to get the job done. An hour and a half of effort by this team and the park was looking great and completely usable again.

It was free – it was fun – it was effective in solving the problem. Now that's Detroiters taking charge!



Nancy, Jeanne, and Mia wait for woodchips.



Jacquie, Martin, and Julie loading chips.



Washer & Dryer Repair Since 1980

Washer

Dryer

A-1

Service

No Service charge if repaired.

Servicing most makes & models.

Rosedale Park Resident. (313) 838-1149

Kenneth Lee Lewis

Jan. 15, 1950 – July 27, 2013

Kenny, the one son of Lee Lewis and Mattie Jennings Lewis, was born January 15, 1950 in Baltimore, Maryland. Reared in Baltimore, he had many close relatives and friends who actively participated in his upbringing and helped shape his life. Kenny received his early education in Baltimore Public Schools, graduating from Baltimore City College High School. He attended Morgan State College, now Morgan State University, receiving a B.A. in English in 1972. While at Morgan State, he pledged Alpha Phi Alpha Fraternity, served as editor of the college newspaper, and was an activist in civil and student rights issues. Thereafter, he attended Catholic University of America (Washington, D.C.), where he received a J.D. in 1975.

After graduating from law school, Kenny moved to Detroit and worked for Michigan Legal Services and passed the Michigan State Bar in 1976. His first notable case was *Martin Luther King Junior Elementary School Children et al vs. Ann Arbor Public Schools* (better known as the "Black English Case") where he successfully argued in front of U.S. District Court for the Eastern District of Michigan that the school system had to find a way to identify Black English speakers in schools and "use that knowledge in teaching such students how to read standard English."

Thereafter, Kenny practiced law for the next 37 years, continuing in the public sector with the City of Detroit Law Department and Wayne County's Corporation Council. He practiced privately with Patrick, Reid, and Lewis and finally with Plunkett and Cooney in 1993 until his untimely death. During his career, Kenny held leadership positions in various legal and civic organizations, including the State Bar of Michigan, Detroit Bar Association, the National Bar Association (Board of Governors), Conference of Black Lawyers.



Kenny Lewis (in chair), surrounded by coaches, players and officials of the Rosedale Grandmont Little League.

Always the baseball enthusiast, Kenny participated as a committee member and long-time coach of the junior baseball Cardinals in the Rosedale Grandmont Little League. He also work hard to spread little league baseball to boys and girls throughout the city of Detroit.

Kenny loved people and that love was returned in full measure. He was a charismatic comedian and storyteller who loved to make people laugh. Kenny was always the center of attention; people gravitated towards him because of his embracing, humble, and loyal disposition. He was a son, brother, nephew, husband, father, uncle, son-in-law, brother-in-law, godfather, cousin, friend, mentor, colleague, and an inspiration to all. An avid golfer and historian, he will be sorely missed.

Kenneth Lee Lewis passed away peacefully July 27, 2013, surrounded by his family after a long and courageous battle with cancer. His legacy lives on with his wife, Linda Streeter; three children, Bradford, Zuri, and Myles; one sister, Cynthia Lewis; one brother, Gary Lewis; three aunts, Thelma Erwin, Beulah Lang and Alma Edwards; and numerous cousins, nieces, nephews, in-laws, and friends.



**Family
is why
we do
it all.**

Theodore C Brown Ins Agcy Inc
Theodore Brown, Agent
Southfield, MI 48076
Bus: 248-352-4757

We all feel the same commitment to care for our families. Helping you meet your insurance needs is part of my commitment to you. **Like a good neighbor, State Farm is there.®**
CALL ME TODAY.



State Farm™

Rosedale Park News Advertising Rates

Did you know that ads in the Rosedale Park News reach over 800 households in and around Rosedale Park for a very reasonable cost?

For more information and to place an ad, please contact Advertising Coordinator Pam Weinstein at 313-231-2244 or weinstein148@ameritech.net.

AD TYPE	COST/ISSUE
Business card	\$24
Quarter page	\$60
Half page	\$120
Full page	\$240
Personal classified*	Free for RPIA members!

NOTE: Prices above are for space only. An additional one-time set-up fee may be charged for new ads and revisions of existing ads. Fees vary depending on complexity of set-up. Copy for new and revised ads is due the 1st of the month prior to the month of publication.

*For individuals and young people only – not for adult-owned businesses; must be text only, and 50 words or less.

RPIA Officer and Board Candidate Statements

The following candidate biographies and statements were submitted for publication.

THELMA BROWN

My husband Darryl, a former RPIA board member, and I have lived in Rosedale Park for over 15 years, raising three daughters here. I have been a block captain for eight years and recently joined the radio patrol.

Currently, I am an executive assistant to a Detroit City Council member. Previously, I worked for the Detroit Medical Center for over two decades. I have a background in business administration and am returning to school to obtain an accounting degree.

I am an active member of Macedonia Baptist Church, currently serving as the treasurer for the Gospel Chorus Mass Choir. I drove the church bus for ten years, served as a greeter, announcement clerk and mentored teens. A missionary by nature, I work with many groups throughout Detroit, focusing on women and children. I'm on the board of directors of Pretty in My Skin, an enrichment mentorship. I have volunteered at Presbyterian Villages of Michigan for the past five years and recently with Matrix Human Services.

Giving back, safety and empowerment are very important to me and I will work to improve all these areas to make a difference in Rosedale Park.

JERRY CULLORS

I've lived on Artesian, between Lyndon and Eaton, for 24 years. I recently retired after 26 years as a Teamster route sales driver for Wonder bread. My wife, Gail, and I have a daughter, Shantel, who was born in our Rosedale Park home.

All three of us have volunteered in various activities in Rosedale Park. When Shantel played softball in the Rosedale Grandmont Little League, I helped her coaches as an assistant. I also took advantage of every opportunity to help at Shantel's schools, especially at CMA High School.

Recently, I helped organize a successful block club party in conjunction with the block just north of us (Artesian, between Eaton and Chalfonte).

I now volunteer with the Detroit Eviction Defense, a non-profit organization fighting to save homes in our

area from foreclosure. The most effective way to stop blight is to keep people in their homes.

I believe that everyone should become involved in their own community: it's where you are raising your family.

As a board member of the Rosedale Park Improvement Association, I will dedicate the time, energy, drive and willingness to learn to help Rosedale Park continue as a sparkling jewel in the city of Detroit.

LEON JACKSON

My name is Leon Nolan Jackson III. I am the son of Leon N. Jackson Jr. and Denita D. Jackson (deceased November 2003). I graduated from Martin Luther King Jr. Senior High School in 1999. In 2008, I received Bachelor of Science degrees in mechanical engineering and industrial & manufacturing engineering from Indiana Institute of Technology.

As block captain on Glastonbury, between Chalfonte and Eaton, for the past several years, I have learned a great deal about this great neighborhood.

I have volunteered for the June Day picnic as well as the Flintstone Park cleanup. A few months ago, a current board member recruited me to help revise the bylaws for the Rosedale Park Improvement Association. A daunting task, we were able to eliminate a hefty amount of redundancy, streamlining its purpose and making it more effective and meaningful for today's time.

I believe that I can bring strength to the RPIA Board of Directors by addressing the issues of young homeowners like me, and recruit them to become more involved in the affairs and concerns of our community. We claim that we have not been given an opportunity to voice our ideas and I am here to change that.

FRANK RABEN

Rosedale resident Frank Raben has lived on Greenview since 1978, serving for more than 10 years as block captain on his block, as well as several years on the Rosedale Park Radio Patrol. He has served on the Board of Directors of Grandmont Rosedale Development Corporation since 1990, including stints as president, vice president, and treasurer of the organization. Frank has more than 31 years of experience in the banking industry at variety of Detroit financial institutions. If elected, Frank says he will use his experience and expertise to strengthen RPIA's financial position and dues collection process.

PAM WEINSTEIN – to fill a one-year vacancy - 2014 Pam Weinstein has lived in Rosedale Park since 1984, and has served as block captain on her block of Faust since 1990. She has previously served as an RPIA board member and as editor of the ROSEDALE PARK NEWS. She is currently a member of the RPIA Block Captain Coordinating Committee and is an active member of Radio Patrol.

"Supporting the Local Landscape"

**1759 21st Street
Detroit, MI 48216
313.655.2344
detroitfarmandgarden.com**



Providing Detroit's communities with quality farming, gardening and landscape supplies including: topsoil, compost, mulch, aggregates, organic fertilizer and pest control, feed, seeds, tools, vintage garden furniture and more! We Deliver!

RPIA CONTACT LIST • 2013

OFFICERS

President

Stacy Pugh (2013)
14648 Greenview • 313-574-8889
pughsl2002@yahoo.com

First Vice President

VACANT

Second Vice President

VACANT

Treasurer

Rhonda Pugh (2013)
14877 Warwick • 313-837-0875
rhondapugh@firstindependence.com

President Emeritus

Mary McLeod (2013)
15075 Rosemont • 313-272-1704
marytmcleod@aol.com

BOARD OF DIRECTORS

Edmon Carmichael (2013-2015)
15440 Warwick • 313-836-7994
eccgac@juno.com

Dale Cathey (2013-2015)
14965 Stahelin • 313-837-8713
dcathey1954@comcast.net

Jim Dwight (2013-2015)
14810 Faust • 313-837-2252
jdwight99@ameritech.net

Deborah Gore (2011-2013)
15000 Glastonbury • 313-838-3243
debbie_gore@msn.com

Dorothy Roman (2013-2014)
15330 Piedmont • 313-531-6641
aa7636@wayne.edu

Donna Wilson (2013-2014)
14801 Penrod • 313-338-9767
dowilson2@att.net

CONTRACTORS & KEY CONTACTS

Administrative Assistant

Priscilla McDonald
pamcdonald@live.com

Administrator of Records

Carol Snodgrass
snodbusch@hotmail.com

Block Captain Coordinators

Pam Weinstein
weinstein148@ameritech.net

Nancy Bitzarakis
Nancy2061@aol.com

New Neighbor Kit Coordinator

Bill Nolan
15017 Greenview • 313-838-9035
sweetgrass59011@gmail.com

RP NEWS Editor

Amanda LeFranc
rosedaleparknews@yahoo.com

RP NEWS Advertising Coordinator

Pam Weinstein • 313-231-2244
weinstein148@ameritech.net

RP NEWS Layout Designer

Linda Liang

Rosedale Park Radio Patrol

Kathy Roland • 313-320-7185

RPIA MESSAGE HOTLINE

313-927-1089

www.rosedalepark.org

To sign up for the weekly electronic Rosedale Park newsletter,
send e-mail to rpiablast@gmail.com

Rosedale Park News

Serving a Friendly Neighborhood
U.S.P.S. 077-610

The official publication of the Rosedale Park
Improvement Association (RPIA) is published
six times a year by RPIA at
19800 Grand River, Detroit, MI 48223.

Subscription Price

RPIA Members, \$5 per year of \$45 annual dues.
Non-members, \$5 per year.

Periodicals Postage paid at Detroit, Michigan.

Editor: Amanda LeFranc
rosedaleparknews@yahoo.com

Advertising Coordinator: Pam Weinstein
313-231-2244 or weinstein148@ameritech.net

Designer: Linda Liang
linda.liang@att.net

Postmaster: Send address changes to
Rosedale Park News, PO Box 23113, Detroit, MI 48223

Printed by Spartan Forms
24205 Ann Arbor Trail, Dearborn Heights, MI 48217
313-278-6960

Calendar of Events

SEPTEMBER

Tues., Sept. 10.....RPIA General Membership
Meeting, 7 PM
North Rosedale Park
Community House
18445 Scarsdale,
off Bretton Drive at Glastonbury

Sat., Sept. 21Rosedale Recycles
10 AM-2 PM
18605 Pierson

OCTOBER

Tues., Oct. 1 Advertising deadline
for Nov./Dec. issue of RP NEWS

Thurs., Oct. 10.... Article submission deadline
for Nov./Dec. issue of RP NEWS

Sat., Oct. 19.....Rosedale Recycles
10 AM-2 PM
18605 Pierson

**ROSEDALE PARK
IMPROVEMENT ASSOCIATION**

P.O. Box 23113
Detroit, MI 48223
313-927-1089

Editor: Amanda LeFranc
rosedaleparknews@yahoo.com

READ OUR ADS, PLEASE!

Take a minute to notice the local businesses that are advertising in this newsletter. Some are longtime supporters, others are brand-new this issue. What they all share in common is a desire to serve the residents of Rosedale Park, along with a commitment to support our publication. Let them know you appreciate their support and patronize them when you can - thanks!



ROSEDALE RECYCLES

Saturday, September 21

Saturday, October 19

10 AM - 2 PM

18605 Pierson Street

**City living is great.
It's best in
Rosedale Park!**