

# The Rosedale *Tattler*



For the latest neighborhood  
information, please check our website at:  
[www.northrosedalepark.org/](http://www.northrosedalepark.org/)



**PAY YOUR  
2014 MEMBERSHIP  
DUES TODAY!**



## IN THIS ISSUE

General Membership Meeting .....	1
Easter Egg Hunt .....	1
Letter from the President .....	2
Behind the Footlights .....	3
June Day 2014 .....	3
Vacant Property Task Force .....	4
Block Captains Meeting .....	4
Opera Club comes to NRP .....	5
Senior Safe Driving .....	6
Calling All Chess Players .....	6
Neighborhood Open House .....	7
GRDC Update .....	9
Annual Easter Egg Hunt .....	11
NRPCA Book Club .....	12
Walk in the Park .....	13
Safe Bicycling .....	13
NRPCA Calendar .....	14
Tattler Deadline .....	14
Biking is Fun .....	15
Learn How To Make Pasta .....	15
Membership Application .....	16

## NRPCA GENERAL MEMBERSHIP MEETING THURSDAY • APRIL 10, 2014

**7:00 PM**

**Public Lighting Authority pilot program update**

**7:10 PM**

**Legacy Project update**

**7:20 PM**

**Programming and Events update**

**7:30 PM**

**Membership drive announcement**

**7:40 PM**

**GRDC update**

## RPIA & NRPCA Traditional Easter Egg Hunt April 19th, 2014 • 11:00 AM - 1:00 PM



see page 11 for details

*The Rosedale Tattler is a publication of the North Rosedale Park Civic Association. Established in 1924, the North Rosedale Park Civic Association is a community organization that promotes the interests and welfare of North Rosedale Park residents, maintains park facilities for community use, advocates for necessary public improvements, and enforces building restrictions and ordinances within North Rosedale Park.*

# Letter from President Hubert Sawyers III



Did I tell you about the time I got my brother's bike stolen?

I actually handed it over to some kids who lived on the other side of the Southfield freeway. It was one of the most embarrassing days of my life.

I mean, who believes a person who asks, "Hey, can I test out your bike?" The face-palm-worthy answer is me.

Fortunately, my father was able to retrieve it without much stress. The bike had made it about two miles from the scene of the ridiculous crime.

Unfortunately, similar stories of today are not as PG. While in some cases, it is the work of teenagers, but they are not simply equipped with the gift of gab.

The today story, which hits close to home for my family, involves a friend's new Ford CUV. She did not get the chance to be gullible with her vehicle parked in my parents' driveway. No, some guys felt they already had permission to take her car for a spin. Neighbors noticed the peculiar moves, but it was obvious the test-drivers were not interested in checking-in with anyone.

Two miles away and two hours later, the vehicle was found without its tires.

As the NRPCA board works towards our 2014 goals, one of our tactics will be one-on-one interaction with neighbors. You see, one of the biggest changes I see in our neighborhood since I've moved back is the "shuttered" homes. Growing up in North Rosedale Park, it was normal to see a few wide-open front-doors in the summer. These days, I noticed people tend to think something may be wrong if there is not someone tending to an open door.

We may never be able to get that level of comfortable ever again, but I believe we can open up more. The "broken windows" theory on combating crime actually encourages a lively environment, making an area less appealing to burglars and ne'er-do-wells.

I know this will not happen without engaging all neighbors, even if it means one at a time. This is where I ask for your help.

Currently, we have three committees which require the support of our immediate residents. Each committee is aiming to improve the quality of life we experience here in North Rosedale Park. Here is the rundown for each:

NRPCA memberships are the lifeblood of our organization. Without them, we cannot manage to maintain the community house and grounds, which are privately owned by NRPCA. Our Membership committee is chaired by NRPCA vice president, Joe Kvorciak. He is supported by our Membership secretary, Ne-Juan Lockhart. Together, they are looking to increase NRPCA

memberships by focusing on presenting the attractive features and benefits. They will be launching a membership drive this coming spring. If you are interested in helping bolster our membership, contact me for more information.

We want to interact more with our neighbors. What better way to do that than regular neighborhood events, such as pasta-making classes, wine tastings, and Easter egg hunts? Our Programming and Events committee is currently chaired by NRPCA past president, Cheryl Buswell. She is supported by our program management intern, Sheariah Howard-Boswell. They have been working on increasing or enhancing our adult, family, and adult events, which are held in the community house and on the park grounds. Through surveys, they are putting together a comprehensive list of activities to offers at low or no cost to NRPCA members. We now need people to help organize the activities and help spread the word about them. If this interests you, please contact me today.

The Tattler committee is looking to improve the way news is shared across our wonderful neighborhood. The publishing of the Tattler is currently managed by Tom Ridgway and will transition to NRPCA VP, Joe Kvorciak. If you have ever wanted to help make The Rosedale Tattler become a resource neighbors cannot wait to read, make sure you contact me.

As always, the best way to contact me is email: [President@NorthRosedalePark.org](mailto:President@NorthRosedalePark.org).

This year, let's open up a bit to one another to reassume control on our quality of life. Joining a group of committed neighbors in keeping North Rosedale Park awesome is a great start.

*P.S. The committee working on the 84th June Day celebration could also use some volunteer support. Feel free to contact me in joining that effort as well.*

Visit  
**[www.NorthRosedalePark.org](http://www.NorthRosedalePark.org)**  
and use  
**[www.Goodsearch.com](http://www.Goodsearch.com)**  
to search the internet and raise  
money for the Civic Association

# Behind the Footlights

By Roger Loeb

You still have the opportunity to see Park Players' spring production of *GUYS AND DOLLS* on Friday, April 11 or Saturday, April 12 at 8:00 PM at the North Rosedale Park Community House. Just call Marcia Closson (313-835-1103) and she will hold reserved seats for you.

As the songs in the show tell us, "I'll Know" if you don't attend because the evening is "My Time of Day". "If I Were a Bell", I would ring out the news of this hugely successful show. Failure to attend will mean you share in "Adelaide's Lament". Whereas, if you "Follow the Fold" and attend "Guys and Dolls", you will be participating in "The Oldest Established" Detroit community



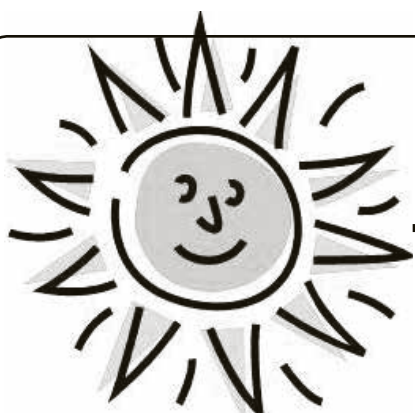
theater group. "More I Can Not Wish You", than to join your neighbors in a delightful evening of musical theater.

Thanks to producers George and Sally Evalt for their tireless efforts in mounting this remarkable production.

Special appreciation to committee heads Tamara Kamara, Tom and Chris Ridgway, Marcia Closson, Jeanette Steinhauer, and Montellis Whitt, along with the entire cast and crew. Well done guys and dolls.



Photos by Lisa Brawley



## A BRIGHT FUTURE IN NORTH ROSEDALE PARK

SAVE THE DATE

THE 84th JUNE DAY IS JUNE 14, 2014

TONS OF FUN FOR EVERYONE!!!!

For more information, please contact Julie Hacker at 313-533-7533 or [jmh219@att.net](mailto:jmh219@att.net).



## NEIGHBORHOOD BUSINESS DIRECTORY

This directory of ads is only available to Park residents to inform neighbors of the businesses and services they offer.

### MITCH'S PAINTING SERVICE

Homes (Inside and Out) Garages, too!  
534-7023 • 282-4921

### JAFRA COSMETICS • Ina M. Grant

Body Oils & Lotions, Fragrances, Make-up  
313-535-1310 • inagrnt@sbcglobal.net  
Sign up for free brochures & sale information

### MARIA ENTERPRISES

General Sewing Needs • Alterations • Tailoring • Dressmaking  
Maria Bryant • Detroit, MI 48291 • 313-537-1560

### JR WATKINS PRODUCTS

Linaments / Cold Remedies, Extracts Spices,  
Beauty Products and More  
Marsha Maxey • 313-408-5500 or Jeepers1954@gmail.com

Concerned about vacant properties in your neighborhood? Want to get involved?

## Join the Vacant Property Task Force!



Volunteers are needed for every street in the North Rosedale Park neighborhood to help with computer research, community outreach and property maintenance efforts. Contact Clarenda Webb, NRP representative of the Vacant Property Task Force at 313.330.7844 or email [clarendawebb@gmail.com](mailto:clarendawebb@gmail.com) to learn more information.

\*Monetary donations are now being accepted to install split rail fences on Stahelin where homes have been demolished in order to prevent illegal dumping. You can also donate yard waste bags, water and volunteer for clean-ups in the neighborhoods.

## THE NORTH ROSEDALE PARK BLOCK CAPTAINS MEETINGS

are the first Tuesday of every month at 6:30pm.

The meetings are held at the Community House which is at 18445 Scarsdale.

This vitally important group of community leaders needs your support.

If you have a neighborhood concern that needs to be resolved, please contact your Block Captain or if you don't know who your Block Captain is, please contact Clarenda Webb at (313) 330-7844 for more information.

Our next meeting will be  
**TUESDAY, APRIL 1, 2014**

We need your involvement now more than ever.

Al Baumgardner  
Co-Owner

Jim Baumgardner  
Co-Owner

### **BAUMGARDNER MECHANICAL, INC.**

Heating, Cooling, Plumbing & Electrical  
24850 W. McNichols  
Detroit, MI 48219

Licensed & Insured  
#71-04661

(313) 537-1600  
Fax (313) 537-2801

## PIANO & GUITAR LESSONS

For the Young and the  
Not-so-young Park Resident  
255-1627

## MICHAEL HOWD PLASTERING

4th Generation Wet Plasterer  
Repairwork our speciality • 734-772-3656  
[cubalibreahvs9@aol.com](mailto:cubalibreahvs9@aol.com) • Insured

# Opera Club presents a preview of *Porgy and Bess*

By Mary Ramsey

North Rosedale Park Opera Club presented a preview of the Tony Award winning *Porgy and Bess*, February 23, at 3 PM. Long-time North Rosedale Park resident, Marsha Bruhn, hosted the affair, which included wine, hors d'oeuvres and musical selections, at her home.

Arthur White, director of the Michigan Opera Theatre (MOT) Opera Club, gave a brief synopsis of the Broadway musical during which two soloists, Alaina Brown and Branden Hood, sang "Summertime," "I've Got Plenty of Nothing" and "Bess, You Is My Woman Now." Pianist Jean Schneider accompanied The MOT singers.

The presentation ended with a question and answer session. Two attendees won two tickets to *Porgy and Bess*, one for winning a raffle, another for answering a trivia question.



*Georgi Mattieson, Everton Swearing, Arthur White and Marcia Closson attended the preview of Porgy and Bess.*



*Marsha Bruhn and son, Dieter of Boulder, Colorado, hosted the MOT Opera Club.*



*MOT singers, Alaina Brown and Branden Hood, lifted their voices to the rafters during the MOT Opera Club presentation.*

***Roofs-Gutters-Painting-Kitchen-Bath-Remodel  
Electrical-Siding-Decks-Plumbing-Finish Bsmt  
Water Damage Repair***

***Pearson Construction Company***

*Serving the Residential & Commercial with Quality Building Service*

***Tyrone Pearson, President  
Licensed & Insured***

***313.399.9122***

***Affordable Prices***

***Senior Discounts***

**JA**

**JARED ANTHONY  
ELECTRIC**

46036 Michigan Ave.  
P.O. Box # 232  
Canton, MI 48188

**Anthony Alfaro**

Master Electrician / President

P: (313) 717-5670 · F: (734) 398-7782  
Email: aalfaro@jaelect.com

**- Free Electrical Estimates -**

Residential · Commercial  
Electrical Circuit Breaker Panels · Troubleshooting  
Emergency Repairs · Code Violations  
Security Lighting and Home Generators

**Licensed & Insured**

**WWW.JAELECT.COM**



# AARP and NRPCA Team Up for Senior Safe Driving

**Drivers 50 and older can learn new ways to stay safe behind the wheel**

A program aimed at helping motorists 50 and older brush up on their driving skills. It will be offered at the North Rosedale Park Community House, 18445 Scarsdale, Detroit, MI.

The two day program will be held on Tuesday, May 20, 2014 and Wednesday, May 21, 2014 from **10AM-2PM**. Registration and attendance at both sessions are required as some auto insurance companies give discounts to seniors who complete the program. The AARP Smart Driving Program gives experienced motorists a chance to sharpen their driving skills and develop strategies for adjusting to age related changes in vision, hearing and reaction time. Motorists also learn about the effects of medication on driving performance, car safety, maintenance and accident prevention.



The fee is \$15 for AARP members and \$20.00 for non-members, payable to AARP. To register or for information, call Judy Barkey at 313-534-4589.

*\*The class size is limited to 20, so first come, first served.*

# Calling All Chess Lovers and Players!

The North Rosedale Park Civic Association wants to start a program to teach younger children and teenagers the game of chess. It would be held in the Board Room at our Community House in the evenings during the school year and in the day time during the summer.

We are looking for volunteers to teach the classes. We are also looking for donations of chess sets. We need about ten chess sets.

You can drop the chess sets off at the NRP Community House, 18445

Scarsdale, Detroit, MI on Monday, Tuesday, Wednesday or Friday from 10am to 2pm or Thursday from 3pm to 6pm.

Volunteers interested in teaching the chess classes can email Sheariah Boswell Howard at [howardshear@yahoo.com](mailto:howardshear@yahoo.com) or call 313-671-9702 for more information.



## HOW TO BUILD COMMUNITY

TURN OFF YOUR TV  
LEAVE YOUR HOUSE

KNOW YOUR NEIGHBORS • GREET PEOPLE  
LOOK UP WHEN YOU'RE WALKING  
SIT ON YOUR STOOP • PLANT FLOWERS  
USE YOUR LIBRARY • PLAY TOGETHER  
BUY FROM LOCAL MERCHANTS

SHARE WHAT YOU HAVE • HELP A LOST DOG  
TAKE CHILDREN TO THE PARK • HONOR ELDERS  
SUPPORT NEIGHBORHOOD SCHOOLS  
FIX IT EVEN IF YOU DIDN'T BREAK IT  
HAVE POT LUCKS • GARDEN TOGETHER  
PICK UP LITTER • READ STORIES ALOUD  
DANCE IN THE STREET

TALK TO THE MAIL CARRIER  
LISTEN TO THE BIRDS • PUT UP A SWING  
HELP CARRY SOMETHING HEAVY  
BARTER FOR YOUR GOODS

START A TRADITION • ASK A QUESTION  
HIRE YOUNG PEOPLE FOR ODD JOBS  
ORGANIZE A BLOCK PARTY  
BAKE EXTRA AND SHARE  
ASK FOR HELP WHEN YOU NEED IT  
OPEN YOUR SHADES • SING TOGETHER  
SHARE YOUR SKILLS

TAKE BACK THE NIGHT  
TURN UP THE MUSIC • TURN DOWN THE MUSIC  
LISTEN BEFORE YOU REACT TO ANGER  
MEDIATE A CONFLICT • SEEK TO UNDERSTAND  
LEARN FROM NEW AND UNCOMFORTABLE ANGLES  
KNOW THAT NO ONE IS SILENT THOUGH  
MANY ARE NOT HEARD  
WORK TO CHANGE THIS

- CUSTOM PAINT FINISH
- WOOD STAINING
- CREATIVE APPLICATION
- DRYWALL & PLASTER REPAIRS
- WALLPAPER REMOVAL
- SMOKE & MOLD REMOVAL
- FIRE & WATER DAMAGE

## ICON PAINT CO. LLC

20+ Years Experience

REJUVENATE YOUR HOME...  
DON'T WAIT CALL TODAY!

(313) 409-0201



## GRANDMONT ROSEDALE COMMUNITIES TO FEATURE HOMES FOR SALE AT ANNUAL OPEN HOUSE ON MAY 4

The five neighborhood associations comprising Grandmont Rosedale Communities are eager to show off fine homes for sale during their 9th Annual Neighborhood Open House to be held on Sunday, May 4 from 1:00 to 5:00 pm. This year's offerings include several homes which have been fully updated by the Grandmont Rosedale Development Corporation through the City's Neighborhood Stabilization Program.

Registration will be at the North Rosedale Park Community House, 18445 Scarsdale, where visitors can pick up a list of the homes for sale that will be open that day, enjoy popcorn and refreshments, and get information on financing options, down payment assistance and the 15-year tax abatement available to new buyers. Visitors are invited to take a short bus tour, narrated by local residents, highlighting some of the featured homes and neighborhood amenities.

As noted by Open House chairperson Cheryl Davis, "As a 27 year resident and real estate broker, the vibrancy and sustainability continue to make the Grandmont Rosedale Communities an attractive place for living."

Wheelhouse Detroit has scheduled a bike ride from downtown to the Community House, where neighborhood residents will give cyclists a guided tour. Persons interested in joining the ride should contact Wheelhouse Detroit directly.

Grandmont Rosedale has been targeted for stabilization and investment in the Detroit Future City framework plan. In the past several years, a million plus dollars

have been invested in this neighborhood by foundations, the City, and the Detroit Land Bank Authority, much of it targeted for housing rehab by the neighborhood-based Grandmont Rosedale Development Corporation (GRDC). The area is part of a demonstration project by the Public Lighting Authority to upgrade all residential lighting by the end of April 2014.

All homes are eligible for \$7,500 in down payment assistance through First Merit Bank. GRDC's homes are eligible for \$10,000 through the Detroit Development Fund, which can be combined with First Merit's program.

New neighbor Alex Derelakos is enthusiastic about the neighborhood. "My wife and I were considering the neighborhood as a place to settle down, but it was the open house/neighborhood tour that really sold us. The event was a great way to learn about the community and its assets by seeing them in person with the guidance of its residents. We've been here for a year now and couldn't be happier with our decision to purchase a home in Rosedale Park."

This popular event is sponsored by the community associations of North Rosedale Park, Rosedale Park, Grandmont, Grandmont #1, and Minock Park, in conjunction with the Grandmont Rosedale Development Corporation, Robinson Realty and Management Group, First Merit Bank, Macedonia Baptist Church, and Dusing Security.

For more information, visit [www.grandmontrosedale.com](http://www.grandmontrosedale.com).



## Enjoy the Benefits at Peoples Trust



- Savings Programs
- 24/7 Account Access
- Low-Rate Loans
- Mortgages & Equity Loans
- Budget Counseling
- Financial Planning



**Peoples TRUST**  
CREDIT UNION

*Your Financial Home*

### Main Office

24333 Lahser Road • Southfield, MI 48033

Call for other locations

248-263-4100 • 866-600-7828

[www.peoplestrustcu.org](http://www.peoplestrustcu.org)



PROMPT • PROFESSIONAL • COURTEOUS

## Need help with your lawn? Call 1-888-4-LAWN HELP

(888-452-9643)

When it comes to creating thick, green lawns, depend on Greener Still, Inc. Our professional programs and experienced technicians can give you a lawn your whole family will enjoy. And, since we're a local company, we get to know you and your individual lawn needs. Depend on us to deliver what your lawn really needs...when it needs it...all season long.

- Fertilization/  
Weed Control
- Aeration/Seeding
- Expert Tree Care:  
Removal, Trimming,  
Spraying & Feeding
- Insect Control
- Sprinkler System  
Installation/Service

**Call Greener Still, Inc. today**  
for a personal, no-cost evaluation of your lawn care needs.

TURF & TREES

**greener still inc.** ...a gROWing concern

State Licensed  
and Insured

TURF AND TREE EXPERTS SINCE 1965

**Toll-free 1-888-4-LAWN HELP**

(888-452-9643)

Major credit cards accepted



## PC Tutor

Computer Repair and Computer Training

"SERVICE YOU CAN TRUST"

## Computer Repair



- Virus/Spyware Removal
- Cracked Laptop Screens
- Power Supply Repair
- Motherboard Repair
- Hard Drive Upgrade
- RAM (Memory) Upgrade
- Graphic Card Upgrade
- Slow Computers
- Desktops/Laptops

New  
Hours!  
Mon-Fri  
10a-6p

### Located at:

19427 W McNichols Rd  
Betw Outer Dr & Evergreen  
Detroit, Michigan  
313-362-2898  
[www.pctutordetroit.com](http://www.pctutordetroit.com)



ce

## Need Affordable Health Insurance? **DMC** can help.



**April 26, 2014**  
**9 a.m. - 2 p.m.**

Location: Detroit Collegiate Preparatory High School  
at Northwestern,  
2200 W. Grand Blvd., Detroit, MI 48208

**For more information or to REGISTER NOW!**  
**888-362-2500 | [dmc.org/pathtohealth](http://dmc.org/pathtohealth)**

Path  
to  
Health

**DMC**  
*always there.*





## GRANDMONT ROSEDALE DEVELOPMENT CORPORATION

1989 2014

### STOEPEL IMPROVEMENTS COMING A BIT LATER

Due to the incredibly harsh winter this year, most of the planned improvements to the Stoepe Park No. 1 baseball fields will be delayed until summer. New dugouts and foul poles will be installed before the baseball season starts on April 26, but the irrigation, grass infields and Field #4 improvements will not take place until after the baseball season ends. This will allow sufficient time for the ground to dry out prior to construction and no games will be interrupted by the renovations.

This project is being sponsored by the Rosedale Grandmont Little League with support from GRDC and many other partners. Many thanks are due to the funders of this year's planned improvements: Wayne County through the efforts of Commissioner Alicia Bell, UAW-Ford through the efforts of Jimmy Settles, and the Baseball Tomorrow Fund, a joint initiative between the Major League Baseball Players Association and Major League Baseball.

### FREE SUPPORT FOR SMALL BUSINESSES

TechTown, a small business support organization affiliated with Wayne State University, is teaming up with GRDC to bring its successful "SWOT City" program to the Grandmont Rosedale community. Through this program, TechTown's business coaches will provide FREE one-on-one consultation and business strategy advice to neighborhood-based businesses and entrepreneurs. Learn how to grow your business and access a variety of small business resources. Any kind of business is eligible. For more information contact Ted Jones of TechTown at 313-759-9503 or [ted@techtowndetroit.org](mailto:ted@techtowndetroit.org).



### TRASH TALKIN' GEARS UP FOR SPRING!

As the snow thaws this Spring, we will surely uncover a sizeable assortment of unsightly litter. Not to worry, though! With the help of resident volunteers like you, we



can whip our commercial corridors back into tip top shape in no time. Join us on the 4th Saturday of each month (May – Sept) at Always Brewing Detroit (19180 Grand River) for free coffee and conversation followed by a brief litter sweep. We will provide supplies including: gloves, litter grabbers and trash bags. Spring/Summer 2014 Trash Talkin' dates are as follows: May 24, June 28, July 26, Aug 23, Sept 27. Coffee starts at 9:30, clean ups start at 10 am. In the event of inclement weather, Trash Talkin' will be canceled.

### 25 YEARS OF GRDC!

On July 12, 2014 from 11am – 3pm GRDC is hosting a big party to celebrate its 25th anniversary! We will celebrate with a neighborhood picnic complete with food, music, door prizes, and entertainment at Ramsey Park that will be open and free for everyone in the community and all of our funding partners. Save the date and stay tuned for more details. Let's celebrate our neighborhoods, our community, our home, together! **See you on July 12th!**

### GREENING OF DETROIT COMING TO GRANDMONT ROSEDALE

With the brutal winter behind us, many are eager to get outside and enjoy the natural beauty of Grandmont Rosedale. The Greening of Detroit would like to be a part of spring in our community and is offering assistance to individuals and groups who might want to start a garden or improve their existing garden. For further information contact Caitlyn Pisarski, Greening of Detroit Community Engagement Coordinator Direct Line: 313-285-2238 Email: [caitlyn@greeningofdetroit.com](mailto:caitlyn@greeningofdetroit.com).

### RENOVATED HOMES FOR SALE –

GRDC has newly renovated homes for sale in the Grandmont Rosedale area. Each home has been thoroughly updated and is in move-in condition. In addition to getting a beautifully renovated home, homebuyers will also receive down payment assistance and free homebuyer counseling to insure that they get off on the right foot. Check out the GRDC website at [www.grandmontrosedale.com](http://www.grandmontrosedale.com) for more details and

a complete list of homes for sale or call 313-387-4732 ext 100 today.

### OFFICE SPACE FOR RENT – GRDC

has affordable office space for rent on Grand River. Options range from a move-in ready 1400 sf unit at 19560 Grand River to individual offices and shared "co-working" space in the soon-to-be-renovated building at 19120 Grand River. For more information contact Kirsten Donoghue at 313-387-4732 ext 120 or [kdonoghue@grandmontrosedale.com](mailto:kdonoghue@grandmontrosedale.com).

### NEIGHBORHOOD SAFETY MEETING

– The next meeting will be held on Thursday, April 24. Join us at 6:30 PM for a lively discussion at the North Rosedale Park Community House, 18445 Scarsdale.

### JOIN THE CRIME ALERT NETWORK

– The Grandmont Rosedale Crime Alert sends out email alerts as reported by community residents about recent suspicious or criminal incidents or activities in the Grandmont Rosedale neighborhoods. The goal is to prevent crime by sharing information among area residents. To join the Grandmont Rosedale Crime Alert system, send an e-mail request to [grandmontrosedalecrimealert@googlegroups.com](mailto:grandmontrosedalecrimealert@googlegroups.com).

### VISIT MYGRANDMONTROSEDALE.

**ORG** – Want to stay up to date on all the latest happenings in the Grandmont Rosedale community? Visit [mygrandmontrosedale.org](http://mygrandmontrosedale.org) to find neighborhood stories, a calendar of community events, a business directory, and much more. We are on Facebook, too -- find us at [facebook.com/MyGrandmontRosedale!](http://facebook.com/MyGrandmontRosedale!)



### GET THE GRDC E-MAIL BLAST! –

Sign up to receive GRDC's weekly email newsletter and get timely neighborhood news delivered directly to your inbox every Wednesday morning. Don't miss out. Send an e-mail to [info@grandmontrosedale.com](mailto:info@grandmontrosedale.com) and ask to be added to the list today.

## Park Lane Check Cashing / Liquor

### We Cash:

Income Tax • Insurance • Payroll • State 401K  
Lawsuit Settlements • Pension Checks

**\$20.00**

When You Cash Your Income  
Tax or Insurance Check  
Over \$1000

- Western Union
- Fax & Copy Service
- Money Orders
- Complete Bill Payment Center

19150 W. McNichols  
Detroit, MI 48219

Tel: 313.255.0004  
Fax: 313.255.5012



JAMES L. DUSING  
Cell: 586-855-0669

Dusing Security & Surveillance

"Providing Reliable Solutions For All Your Low Voltage Needs"

- Security Systems • Remote Surveillance Cameras
- Fire Alarms • 24 Hour Alarm Monitoring

P.O. Box 256, Anchorville, MI 48004

Phone: 586-779-5002 Toll Free: 866-SAFE-DSS Fax: 810-794-5319  
www.safewithdss.com Email: jdusing@safewithdss.com

"Did you know Dusing Security offers BOTH your patrol  
service and alarm monitoring for \$30.00/month!"

**IMAGINE - TWO SERVICES FOR \$1.00 PER DAY!!**  
Call 586-779-5002 for details!!



Cheryl V. Davis  
Managing Broker

Cell: (313) 477-4564  
Office: (248) 593-9494 ext. 41  
Office Fax: (248) 593-9696  
cheryld@rrmgus.com  
www.rrmgus.com

Washer & Dryer Repair Since 1980

Washer

Dryer

**A-1**

Service

No Service charge if repaired.

Servicing most makes & models.

Rosedale Park Resident. (313) 838-1149

**facebook**

Follow **NORTH ROSEDALE PARK**

Like Us on Facebook or visit us on our website at <http://northrosedalepark.org>

*Michael C. Hudgins, D.D.S.*  
GENERAL DENTISTRY

19001 GRAND RIVER AVENUE  
DETROIT, MI 48223

TELEPHONE (313) 838-6679



*D.  
D.  
S.*

**DR. PAULA CARSON**

*Your Family Dentist*

18616 W. McNichols  
Detroit, MI 48219  
Phone (313) 532-1115  
Fax (313) 255-4523

28245 Southfield Rd.  
Lathrup Village, MI 48076  
Phone (248) 423-9000  
Fax (248) 423-9020

*Office Hours By Appointment*

**Dr. Lawrence Rubin**

Diplomate, American Board of Podiatric Surgery



**FOOT & ANKLE SPECIALIST SINCE 1979**

Treating all foot & ankle problems  
Medical • Surgical • Orthopedic • Diabetic Care

18530 Grand River, Detroit • (313) 273-9400  
2 blocks west of the Southfield Freeway

**Southfield**

DEALERS USED VEHICLE SALES  
21399 Telegraph Rd.  
Southfield, MI 48034  
PH (248) 352-7199

**Tony Gullette**

Sales Professional

[tgullette@southfielddealersusedcars.com](mailto:tgullette@southfielddealersusedcars.com)

North Rosedale Park Resident 22 Years



Terrific, fun-filled activities will include  
hunting for eggs in the park, vision  
screening and a **Petting Farm!**

And there are rumors that  
the Easter Bunny will visit us!

Be sure to bring your basket  
to collect eggs.

## **RPIA & NRPCA Traditional Easter Egg Hunt**

**April 19th, 2014 • 11:00 AM - 1:00 PM**

NORTH ROSEDALE PARK COMMUNITY HOUSE  
18445 SCARSDALE

Children up to age 10 from any of the five Grandmont Rosedale communities are  
welcome to participate.

The Detroit Medical Center is providing vision screening.

We're in need of wrapped candy donations, small enough to fit inside an egg.

Willing to volunteer or donate?

Contact:

Cheryl Buswell at 586-222-9454

or

Call the NRPCA office at 313-837-3416



# I ♥ Book Club

With effortless grace, celebrated author Chimamanda Ngozi Adichie illuminates a seminal moment in modern African history: Biafra's impassioned struggle to establish an independent republic in southeastern Nigeria during the late 1960s. We experience this tumultuous decade alongside five unforgettable characters: Ugwu, a thirteen-year-old houseboy who works for Odenigbo, a university professor full of revolutionary zeal; Olanna, the professor's beautiful young mistress who has abandoned her life in Lagos for a dusty town and her lover's charm; and Richard, a shy young Englishman infatuated with Olanna's willful twin sister Kainene. *Half of a Yellow Sun* is a tremendously evocative novel of the promise, hope, and disappointment of the Biafran war.

Please join the Book Club in the Park (BCIP's) as we discuss

## Half of a Yellow Sun

By Chimamanda Ngozi Adichie  
on

Thursday, April 17, 2014  
at 6:00pm

The North Rosedale Park Community House

**C & M**  
**Landscaping, Inc.**  
**313-592-8118**  
Licensed & Insured  
**Free Estimates**

### Custom Brick Paving

- Walks, Patios, Porches
- Steps, Retaining Walls, Drives

### Landscaping

- Weekly Maintenance
- Spring & Fall Clean up
- Mulch Installation
- Landscape Installation
- Sprinkler System

### Tree & Shrub Care

- Removal & Trimming
- Deep Root Fertilizing
- Micro-Injection
- Stump Grinding



## COMPUTER TROUBLE?

Computer Sales, Service, Training and Upgrades

**All About Technology**

2727 Second Avenue, Suite 131  
Detroit, MI 48201

**(313) 218-4888**

[www.callwillie.com](http://www.callwillie.com)



## Walk In the Park



### GROUP WALKING WITH A

#### PURPOSE:

Whether this is your first step toward a healthier lifestyle or just a new activity to freshen up your existing exercise routine, walking is the best option for most of us.

Walking Lifts Your Mood! Strengthens

Your Bones! Improves Your Balance and Coordination!

Most importantly it prevents and manages various conditions, including heart disease, high blood pressure and type-2 diabetes.

Join us for a chance to win prizes for best attendance for the month's of March, April and May.

Remember, movement is the key to better fitness, health and a "Long Healthy Life".

Once you get on the trail and get your arms and legs moving, don't be surprised to find even more benefits.

For more information please contact HEP (Healthy Environment Partnership) COORD 313-971-3990 or NRPCA office 313-837-3416.

### KEEP IT MOVING!!!

When: Weekly from 5:30pm to 6:30pm on Monday, Wednesday, and Friday (*Eastern Time*)

Where: North Rosedale Park Community House  
18445 Scarsdale Street, Detroit, MI

## SPRING INTO BIKING WITH SHELLEY

On April 29, 2014 • 7PM-9PM



### “An Introduction to Your Bike and Bike Riding!”

The instructor will cover: equipment; clothing; rules of the road; signs and signals; bike etiquette; how to navigate the new bike paths; bike maintenance and minor adjustments and how to change a tire. It will be a hands-on class, so bring your bike.

Shelley is a long time bike rider in Detroit, a member of the esteemed Wolverines Bike Club, and is a medalist at the Senior Olympics. She has ridden her bike in many self-contained and group tours such as the DALMAC, the Michigander, and the PALM to name a few. She also leads bike tours in Detroit, mentoring new riders.

#### Costs:

\$12.00 per Adult   \$18.00 for Families   \$8.00 for unchaperoned youngsters

For Reservations or Information Call Judy at **313-534-4589**

Doors open at 6:30pm. • Class starts at 7pm

*Sponsored by the NRPCA and*

*The Bicycle Doctor • 24434 John R • Hazel Park, MI 48030 • Randy "Doc" Martin • 248-584-3060*



**Meet at the North Rosedale Park Community House  
18445 Scarsdale • Detroit, MI 48223**

# North Rosedale Park eBlast Newsletter

aka: Rosedale Tattler eBLAST EDITION

This April marked the beginning of the **Rosedale Tattler eBLAST EDITION**. An electronic newsletter designed to supplement the printed version of the Tattler will be distributed via email. The eBLAST EDITION is not intended to replace the printed Tattler, but to provide vital and interesting news, information and reminders that sometimes miss the Tattler deadline (the 10th of each month). The eBlast should arrive in your email around the 3rd week of each month so as to meet this objective. In order to receive the eBlast **you must be on the "list"**. However, it is really easy to signup for the list by visiting the homepage of the North Rosedale Civic Association at <http://NorthRosedalePark.org> and pushing the big red subscribe button. **Get yourself signed up today so**

**that you will be in the know!** The exception to this requirement is that we have seeded the list with a number of email addresses that we have from our membership roster so your name may be on the list already. If you're not sure you can still push the subscribe button as the same email address will not be signed up twice. If for some reason you do not wish to be subscribed there will be a link at the bottom of each newsletter that may be used to unsubscribe. In case you want to be sure that this newsletter does not fall into your junk mail folder, be sure to just add the newsletter sender to your address book. You are encouraged to send articles for publication to the eBlast editor: [eblast@northrosedalepark.org](mailto:eblast@northrosedalepark.org).

## NRPCA Calendar • April 2014

1	Block Captains Mtg. ....	6:30pm	13	Show .....	–	24	Rental .....	10am
2	HEP Walk Group .....	5:30pm	14	Rental .....	10am	24	Neighborhood Safety Mtg. ....	6:30pm
2	Rental .....	6pm	14	HEP Walk Group .....	5:30pm	25	HEP Walk Group .....	5:30pm
3	Rental .....	10am	14	June Day Planning Mtg. ....	7pm	26	Rosedale Baseball Pancake Breakfast .....	9am
3	NRPCA Board Mtg. ....	6:30pm	14	Rental .....	7pm	27	Rental .....	3pm
3	Rental .....	7:00pm	16	HEP Walk Group .....	5:30pm	28	Rental .....	10am
5	Rental .....	8pm	16	Rental .....	6pm	28	HEP Walk Group .....	5:30pm
7	HEP Walk Group .....	5:30pm	17	Rental .....	10am	28	Rental .....	7pm
7	Rental .....	7pm	17	Book Club .....	6pm	28	June Day Planning Mtg. ....	7pm
9	HEP Walk Group .....	5:30pm	18	HEP Walk Group .....	5:30pm	29	Biking in the "D" .....	6:30pm
9	Rental .....	6pm	19	Easter Egg Hunt .....	11am	30	HEP Walk Group .....	5:30pm
9	Rental .....	7:15pm	21	Rental .....	10am	30	Rental .....	6pm
10	NRPCA Gen. Membership Mtg. ....	7pm	21	HEP Walk Group .....	5:30pm			
11	Show .....	6pm	21	Rental .....	7pm			
12	Show .....	4pm	23	HEP Walk Group .....	5:30pm			
			23	Rental .....	6pm			

## Rent the Community House for Your Next Function!

Call Nicole Daniels at (313) 837-3416 to reserve your upcoming event.

Benefits of renting the Community House...supports your community, house-sitter on duty, security on duty, short drive home!!!

## Deadline for the Tattler

*The Rosedale Tattler* is a monthly newsletter published by the NRPCA. All articles and advertisements are due the 10th of each month. Please contact **Maria Bryant at 313-537-1560 or [mariab19@sbcglobal.net](mailto:mariab19@sbcglobal.net)** for advertising rates and policies. Please submit articles to **[NRPCA\\_TattlerEditor@Yahoo.com](mailto:NRPCA_TattlerEditor@Yahoo.com)**.

We welcome and encourage submissions. The author's name, address and phone number is required for publication. The editorial staff reserves the right to edit submissions for space or for which they deem obscene, defamatory, deceptive or misleading.





## WHY I LOVE TO BIKE

I get to ride with my husband in the fresh air. Ride with friends on Tuesday Night with a route that winds thru Woodbridge, the Riverfront around Belle Isle and back. It has given me new friends. That impacted my life in ways I never imagined. It put me on a six Day PALM ride along with 800 other riders. It challenged me to ride the MS 150 for charity and complete a century (100miles). It made me stronger physically and mentally.

## BIKING IS FUN

Judy Barkey  
Tuesday ride 313-534-4589

# PASTA MAKING

With Marcia Closson

Where:

**North Rosedale Park  
Community House**

When:

**Thursday May 29, 2014**

Time:

**6:30 p.m. - 8:30 p.m.**

Registration Fee:

**\$20.00**

**Registration fee includes  
instruction, ingredients, supplies  
and a serving of pasta.**



Please register by visiting or calling the community house by May 22, 2014.

Community House Hours:

**10 a.m. – 1 p.m. (Monday – Wednesday & Friday)**

**3 p.m. – 6 p.m. (Thursday)**

North Rosedale Park Community House

18445 Scarsdale | Detroit, MI 48223 | 313-387-3416 | [NorthRosedalePark.org](http://NorthRosedalePark.org)





## North Rosedale Park Civic Association Membership Application

Name(s) \_\_\_\_\_

Address \_\_\_\_\_

Zip Code \_\_\_\_\_

Phone \_\_\_\_\_

Email \_\_\_\_\_

### Membership Dues

<b>Resident</b> .....	<b>\$60</b>
<b>Non-Resident</b> .....	<b>\$40</b>
<b>Business</b> .....	<b>\$40</b>

Enclosed is \$\_\_\_\_\_ in payment for dues for the year ending December 31, 2014.

Additional Donation enclosed \$ \_\_\_\_\_

Make checks payable to:

**North Rosedale Park Civic Association or NRPCA**

Mail dues to:

**Membership Secretary**  
**18445 Scarsdale, Detroit MI 48223-1333**

*The NRPCA is now a 501(c)(3) charitable organization.  
Contributions and dues payments to the NRPCA  
are tax deductible under state and federal tax laws.*

### Be a Volunteer!

**Please tell us how you would be interested in helping.**

Areas of interest:

\_\_\_\_\_

\_\_\_\_\_

\_\_\_\_\_

\_\_\_\_\_

\_\_\_\_\_

\_\_\_\_\_

\_\_\_\_\_

\_\_\_\_\_

**Thank you for your support!**

## NRPCA 2014 Board of Directors

Ours is an active neighborhood, and NRPCA Board members are responsible for taking on assignments at the beginning of each year. In many cases, committees are formed to carry out the activities, and volunteers are always welcome.

The Board meets on the 1st Thursday of every month except July and August.

### BOARD OF DIRECTORS AND THEIR ASSIGNMENTS

#### PRESIDENT:

**Hubert Sawyers III • 313-451-0808 • [president@northrosedalepark.org](mailto:president@northrosedalepark.org)**  
*Capital Campaign, IT*

#### VICE-PRESIDENT:

**Joe Kvorlak • 313-444-2294 • [vicepresident@northrosedalepark.org](mailto:vicepresident@northrosedalepark.org)**  
*Cooke School, Detroit Works*

#### PAST-PRESIDENT:

**Cheryl Buswell • 586-222-9454 • [pastpresident@northrosedalepark.org](mailto:pastpresident@northrosedalepark.org)**  
*Girl Scouts, NRPCA Intern Program, Youth Programming*

#### DIRECTOR:

**Kathy Garrett • 313-537-0352 • [directorGarrett@northrosedalepark.org](mailto:directorGarrett@northrosedalepark.org)**  
*GRDC, Tattler*

**Erma Leaphart-Gouch • 313-532-7184 • [directorGouch@northrosedalepark.org](mailto:directorGouch@northrosedalepark.org)**  
*Adult Programming, Membership*

**Tripp Marshall • 313-766-6745 • [directorMarshall@northrosedalepark.org](mailto:directorMarshall@northrosedalepark.org)**  
*Cooke School, Family Programming*

**Susan Steigerwalt • 313-549-9523 • [directorsteigerwalt@northrosedalepark.org](mailto:directorsteigerwalt@northrosedalepark.org)**  
*Youth Sports*

**Richard Castillo • 888-407-7460 • [directorcastillo@northrosedalepark.org](mailto:directorcastillo@northrosedalepark.org)**  
*Neighborhood Safety, Vacant Property*

**Robert (Bob) Weed • 586-764-0562 • [directorweed@northrosedalepark.org](mailto:directorweed@northrosedalepark.org)**  
*Block Clubs, Code Enforcement*

### APPOINTEES

#### CORR. SECRETARY:

**Marcia Closson • 313-835-1103 • [corsecretary@northrosedalepark.org](mailto:corsecretary@northrosedalepark.org)**  
*Northwest Farmers' Market, Park Players*

#### MEM. SECRETARY:

**NaJuan Lockhart • [memsecretary@northrosedalepark.org](mailto:memsecretary@northrosedalepark.org)**

#### REC. SECRETARY:

**Mary Ramsay • 313-533-7313 • [maryr513@aol.com](mailto:maryr513@aol.com)**

#### TREASURER:

**John Gumbel • 313-531-5817 • [TreasurerNRPCA@gmail.com](mailto:TreasurerNRPCA@gmail.com)**  
*Document Retention*

#### BLDG. MANAGER:

**Nicole Daniels • 313-837-3416 • [nrpca@att.net](mailto:nrpca@att.net)**  
*Financial Processes*

#### NRP CODE ENFORCEMENT COMMITTEE HOT LINE:

**(313) 923-7350 • [codeenforcement@northrosedalepark.org](mailto:codeenforcement@northrosedalepark.org)**

#### PROGRAM MANAGER:

**Sheariah Boswell Howard • [howardsbhear@yahoo.com](mailto:howardsbhear@yahoo.com)**

#### PROGRAM ORGANIZER:

**Jessica Bickman • [Jessica.Bickmann@gmail.com](mailto:Jessica.Bickmann@gmail.com)**

### TATTTLER NEWSLETTER

#### TATTTLER EDITOR:

**Tom Ridgway • 313-623-5643 • [thomas.ridgway@gmail.com](mailto:thomas.ridgway@gmail.com)**

#### ADVERTISING COORDINATOR:

**Maria Bryant • 313-537-1560 • [mariab19@sbcglobal.net](mailto:mariab19@sbcglobal.net)**

#### PRODUCTION ARTIST:

**Linda Liang • [tattler@northrosedalepark.org](mailto:tattler@northrosedalepark.org)**