



# Rosedale Park News

Serving a Friendly Neighborhood

Volume LXXI • Number 2

Rosedale Park • Detroit, Michigan 48223

March/April 2013

[www.rosedalepark.org](http://www.rosedalepark.org)

## Why pay dues?

Why should we pay Rosedale Park Improvement Association dues?

Because it is the most important way to keep our neighborhood thriving. Yes, thriving. Compared to most communities in Detroit, Rosedale Park has been able to stem the tide of deterioration. In order to move forward, we need a strong, powerful organization. Here is what you get for \$45:

- Streets that are plowed during heavy snow
- Block captain coordinators who maintain the block captain network
- The Radio Patrol
- A vacant property task force
- The Island Beautification Committee
- The June Day Picnic
- Free weekly e-blast
- A coordinated five-neighborhood Open House
- Maintaining the entrance facades and signage
- The Rosedale Park News and RPIA website
- The Rosedale Park Hotline

- New Neighbor Kits
- 30-block Garage Sale
- Individual block club support
- Holiday Pancake Breakfast
- Angels' Night support
- Volunteers who lobby for us at the city council and mayor's office
- Volunteers who work hard to keep Flintstone Park beautiful
- Officers and board members who will listen to you and fight for you

Without RPIA, most of the work to keep the quality of life at a high standard in our neighborhood would simply not happen. Let's become active with our neighbors and encourage them to join us and become members of RPIA. As anyone can see, the \$45 investment goes a long, long way.

For more information, call or e-mail any of the officers or board members listed near the back of this newsletter.

## Detroit Partnership Day – March 23, 2013

Every March since 1999, over a thousand University of Michigan students spread across parts of northwest and southwest Detroit planting trees, raking leaves, tearing out brush, painting fences, removing graffiti, and demolishing homes.

The Detroit Partnership Day (DP Day) will be held this year on Saturday, March 23, from 10 AM– 2 PM. Volunteers from Rosedale Park will join U-M students in raking leaves and clearing brush at Flintstone Park and the baseball diamonds at Stoepel Park.

Put on warm clothes and gloves, grab a rake, and join us! You don't have to spend four hours – come for an hour and enjoy the company of your neighbors and new friends as we prepare our community for Spring!

### IN THIS ISSUE

President's Message .....	2
Block Captains' Corner .....	3
GRDC Update .....	5
Board Meeting Summaries.....	6
Neighborhood Open House.....	6
In Memoriam: William W. Brown .....	7
Park Players Presents <i>Dreamgirls</i> .....	7
2013 RPIA Banquet .....	8
Rosedale Recycles Calendar.....	10
"Love Where You Live" Anti-Litter Campaign.....	11
MyGrandmontRosedale.org .....	12
Important Dates in 2013 .....	12
Vacant House and Squatter Alert.....	13
Little League Sign-Up .....	14
RPIA Contact List .....	15
Calendar of Events .....	15

### General Membership Meeting



**Tuesday, March 12 at 7 PM**  
**North Rosedale Park Community House**  
**18445 Scarsdale**  
**(off Bretton Drive at Glastonbury)**

*All Residents Welcome!*



## President's Message

Greetings and happy new year, Rosedale Park neighbors and community partners. I am honored to be elected as your 2013 president. Thank you for your confidence.

I was born and raised in the City of Detroit and have been a resident of Rosedale Park since 2004. I was elected to the board in 2010 and served my first term in 2011. As a dedicated member of the board I have chaired several committees as well as established new committees, such as code enforcement, which help to maintain the integrity of our neighborhood.

I will strive to implement new ideas as our community continues to change. We must build on the historic prestige and culture that Rosedale Park is so well known for. With the City of Detroit being strapped for cash and public safety being a top concern, Rosedale Park is one of the neighborhoods in the city that has maintained its high quality-of-life standards. We have done this by getting out, knowing our neighbors, keeping our eyes and ears open, and addressing issues immediately. This is the cornerstone of Rosedale Park and why I am proud to be a long-term resident and, now, your president.

This year, the board and I will implement many changes: from upgrading the technology to better manage our

finances, to enhancing our website to keep you more informed. We will also explore innovative ways to enhance public safety.

One of our key goals for 2013 is to establish a Neighborhood Benefits District (NBD) that will ensure our community stays safe. Under the NBD residents would pay a small fee that would be used to hire a private security firm to patrol our neighborhood. Many of you attended informational meetings that were held in January.

We will also focus on monitoring and accounting for vacant homes, and will ensure that squatter issues are handled immediately!

Lastly, we will keep our neighborhood and our parks clean and beautiful by addressing blight and code violations.

As the board and I work to accomplish these goals, we cannot do it without your help and participation. I encourage you to volunteer and get involved to help us accomplish our goals by keeping your eyes and ears open, and reporting issues as they arise. I look forward to serving as your 2013 president.

Warm regards,

*Stacy Pugh*

Stacy Pugh, President  
Rosedale Park Improvement Association

### READ OUR ADS, PLEASE!

Take a minute to notice the local businesses that are advertising in this newsletter. Some are longtime supporters, others are brand-new this issue. What they all share in common is a desire to

serve the residents of Rosedale Park, along with a commitment to support our publication. Let them know you appreciate their support and patronize them when you can - thanks!



Washer & Dryer Repair Since 1980

Washer

Dryer

**A-1**

Service

No Service charge if repaired.

Servicing most makes & models.

Rosedale Park Resident. (313) 838-1149

**Rosedale Veterinary  
House Calls**

**Andrew A. Benigna, D.V.M.**

**Park Resident**

**Surgery ♥ Hospitalization ♥ Emergency Services**

**Call 328-8110**

## Block Captains' Corner

By Pam Weinstein

Greetings to everyone! This edition of the Block Captains' Corner consists of a series of short items to bring you up to date on what's going on among the grassroots of Rosedale Park.

### A TREE GROWS IN ROSEDALE

It's almost spring, so that means it's time to plant some new young trees in our neighborhood. Already a dozen neighbors have signed up to plant FREE trees in the berms in front of their homes. Through a partnership with the Greening of Detroit, RPIA is able to replenish trees that have come down due to storm damage or old age. These trees are free to us, which is a great bargain – these young trees are valued at \$300-\$400 apiece!

Every homeowner receiving a tree agrees to supply two volunteers to dig the hole and plant the tree on the designated day. In addition, you must agree to maintain and care for the tree during its first three years. This commitment basically boils down to watering the tree (15 gallons a week in the spring, summer, and fall) and protecting it from damage by lawnmowers and weed-whackers.

There's still time to jump on board – contact me at [weinstein148@ameritech.net](mailto:weinstein148@ameritech.net) or 313-231-2244 to let me know your address and contact info. We'll add you to this list.

### CURBSIDE RECYCLING – BLUE-TOPPED COURVILLES

The City of Detroit Department of Public Works recently expanded its curbside recycling program to cover the part of Rosedale Park that is south of Fenkell, as well as the Grandmont #1 neighborhood. Slowly but surely residents are learning the do's and don'ts of what to put in which container and when to put them out. Neighbors are reminded that there should be NO PLASTIC BAGS

and NO STYROFOAM in the recycling container, which is picked up only on the first and third Mondays of every month. For questions and more information, contact an expert - Rosedale Recycles Coordinator Margie Weber (our neighbor on Piedmont) at [weber@igc.org](mailto:weber@igc.org).

### BLOCK CAPTAINS/CONTACTS WANTED

Currently there are fourteen blocks in Rosedale Park that do not have Block Captains or Block Contacts. This volunteer opportunity includes introducing yourself to everyone on your block and finding out which residents would like to be on a block e-mail list. Other duties include sending e-mails to your neighbors when needed and helping them sign up for the Rosedale e-blast, the Crime Alert reports, and the GRDC e-blast, all of which are all sent out weekly to our households. You might get volunteers to do some island plantings on your block. Or you might organize a potluck or a coffee and donut get-together on your Island so everyone starts to know one another.

Research shows that neighbors who know each other have a better-kept block and this decreases crime. Knowing each other also makes it harder for strangers to come on your block and possibly create mischief.

So if you do not have a Block Captain or Contact on your block, bring a neighbor or come by yourself, and attend our Block Captains' Meeting on February 17th from 4-6 PM at the GRDC office, 19800 Grand River. Enjoy food and fellowship; learn how to make your block more attractive and how to increase your block safety.

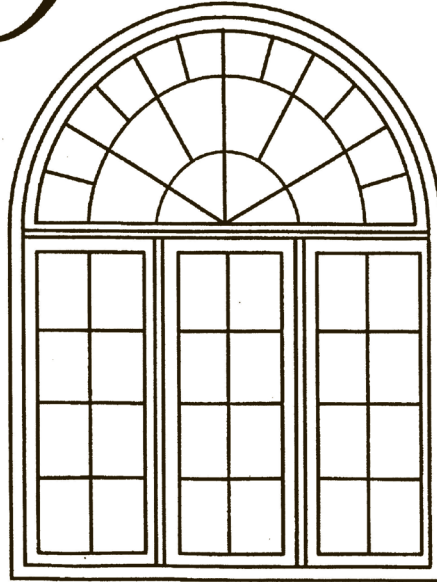
### DOG LICENSES

Be sure that you're doing the right thing by your pet. If you own a dog over six months old in the City of Detroit, you must purchase a dog license annually. The cost is \$10 for neutered dogs and \$15 for non-neutered dogs. You must provide proof of rabies vaccination to obtain the license. Residents can obtain licenses at any of these four Detroit recreation centers; hours for community services at these locations are M-F 11 AM - 6 PM.

West – Northwest Activities Center, 18100 Meyers  
East – Butzel Family Center, 7737 Kercheval  
Central – Williams Community Center, 3431 Rosa Parks  
Southwest – Patton Recreation Center, 2301 Woodmere



# *Kelly Window*



## MANUFACTURING

Historic Window Specialist  
Custom Made Wood Windows

Built any size, any shape, and in any color

15000 Linwood St.  
Detroit, MI 48238  
(313-861-6910)



## HOMES FOR SALE IN GRANDMONT ROSEDALE –

If you or anyone you know are looking to buy a home in the Grandmont Rosedale area, then be sure to visit our web site, [www.GrandmontRosedale.com](http://www.GrandmontRosedale.com), to see the renovated homes that are available from GRDC. GRDC homes are all move-in ready, with many updated features. Down payment assistance is also available to help buyers reduce their out-of-pocket costs and to make home buying more affordable.



In 2013, GRDC will be receiving a grant from the City of Detroit Neighborhood Stabilization Program (NSP). This grant will enable us to buy and renovate nine more vacant area homes. Eight of the nine homes are being purchased through a cooperative arrangement with the Detroit Land Bank Authority. These long-vacant homes were foreclosed for non-payment of taxes, and will be renovated and ready to purchase this spring and summer. For more information, contact GRDC at 313-387-4732, ext. 100, or [belong@grandmontrosedale.com](mailto:belong@grandmontrosedale.com).

## NEIGHBORHOOD SAFETY MEETING –

The monthly neighborhood safety meeting will be held on Thursday, March 28 at 6 PM at the North Rosedale Park Community House, 18445 Scarsdale.

**Judge Victoria A. Roberts** is this month's speaker; her talk will include information about the importance of serving on a Federal jury and will provide other insights into the structure of the court systems and the types of cases presented in each jurisdiction.

Neighborhood Safety meetings are open to the public. Please join your neighbors, local law enforcement officials, and guest speakers as we learn and share crime prevention strategies. Every meeting provides important information to help keep us and our neighborhoods safer! For more information, contact Community Security Assistant Elizabeth Wroughton at 313-387-4732, ext. 109, or [ewroughton@grandmontrosedale.com](mailto:ewroughton@grandmontrosedale.com).

## DREAMGIRLS BENEFIT FOR VACANT PROPERTY TASK FORCE –

Purchase a ticket for a matinee performance of *Dreamgirls* by the Park Players and you'll not only get to see a great show, you'll also be helping to keep your community safe! Proceeds from the Sunday, March 17th matinee performance support the Grandmont Rosedale Vacant Property Task Force, a group of dedicated resident volunteers working to address problems associated with abandoned homes in the community. Doors open at 1 PM, show starts at 2 PM, light refreshments provided. Tickets are \$25. To purchase your tickets and reserve your seats, contact GRDC's Vacant Property Hotline at 313-387-4732, ext. 117.

## OPPORTUNITY FOR LOW-INCOME CONSTRUCTION WORKERS AND BUSINESSES –

If you are a low-income resident of the Grandmont Rosedale area and have skills and experience in home renovation and construction, GRDC would like to help connect you with contractors working on federally-funded home repair and renovation projects in our area.

GRDC utilizes federal funds provided by the Department of

Housing and Urban Development (HUD) to renovate vacant houses and to provide home repair grants and loans to low-income homeowners in the Grandmont Rosedale area. Under Section 3 of the HUD Act of 1968, wherever HUD financial assistance is given for housing or community development, to the greatest extent feasible, economic opportunities must be given to low- and very low-income residents and businesses located in that area.

To qualify under Section 3, construction businesses must be owned by low- or very low-income residents, employ low- or very low-income residents in full-time positions, or subcontract with businesses that provide economic opportunities to low- and very low-income persons. GRDC will work together with local residents and contractors participating in our federally funded programs to share information about employment and/or training opportunities for residents who qualify under Section 3. Contact GRDC Administrative Assistant Wilsie Calhoun at 313-387-4732, ext. 100, or email [info@grandmontrosedale.com](mailto:info@grandmontrosedale.com) for more information.

**JOIN THE CRIME ALERT!** Want to know what's going on around you? Join the GRDC Crime Alert system and you'll get email messages to update you.

The GRDC Community Security Program's staff monitors and sends out email crime alerts as reported by community residents about recent suspicious or criminal incidents or activities. Our goal is to provide timely information to residents and when possible and appropriate, to offer crime prevention strategies and reminders that may help keep us safer in the future.

To join the Grandmont Rosedale Crime Alert system, send an e-mail request to [grandmontrosedalecrimealert@googlegroups.com](mailto:grandmontrosedalecrimealert@googlegroups.com). And please share

*continued on page 13*

## RPIA Board Meeting Minutes

### Summary of RPIA Board Meetings of December 10, 2012 and January 14, 2013

Highlights of the December meeting included an update from GRDC representatives; a report-out from the Events Committee on the Pancake Breakfast and the Annual Banquet; review of the articles needed for the newsletter; discussions on recruiting new board members; plans for the board retreat; and a summary of the financial audit of the RPIA financial practices and overall principles.

Highlights of the January meeting included an introduction and appointment of two new board members; an

update from a GRDC representative; the financial report summary; the status of the RP News advertising initiative; a presentation from Access Surveillance Company; a summary of the committee assignments for 2013; the election timetable; and an update on the Annual Banquet.

For a listing of these minutes in detail, you can find a complete copy on the RPIA website at [www.rosedalepark.org](http://www.rosedalepark.org).

## 8th Annual Neighborhood Open House Sunday, May 5, 2013

By Marsha Bruhn

Know someone who's looking for a home? Invite them to the Grandmont Rosedale Neighborhood Open House! Now in its eighth consecutive year, the five neighborhoods of North Rosedale Park, Rosedale Park, Grandmont, Grandmont #1 and Minock Park are again inviting prospective homebuyers to tour homes for sale in our area. The Open House will run from 1-5 PM on Sunday, May 5th and should include homes currently being rehabilitated

by our partner, the Grandmont Rosedale Development Corporation (GRDC).

Registration will be at the North Rosedale Park Community House where visitors can board a shuttle bus for a short tour of the neighborhoods, talk with vendors about tax abatement and financing, enjoy popcorn and refreshments, and find out about other services in our area.

Wheelhouse Detroit will again offer cyclists a chance to tour Grandmont Rosedale. Starting at Rivard Plaza on the Detroit Riverfront, riders will travel out historic Grand River to the Community House, where they'll enjoy refreshments and then take a guided tour of our neighborhoods. Residents are welcome to join them.

If you have a home for sale, consider including it in the Open House. If you know of a home near you that's for sale, contact the owner or realtor and encourage them to have it open. Almost 300 people attended last year, and homes have sold as a result of this well-publicized and popular event. For more information, contact Mary Sue Schottenfels at 313-909-0760. To volunteer, call Kevin Johnson at 313-835-6136.

### NEED A NEW NEIGHBOR KIT?

Kits are available from coordinator,  
Bill Nolan,  
who can be reached at 313-838-9035  
or [sweetgrass59011@gmail.com](mailto:sweetgrass59011@gmail.com).

### CARLEE'S HOME DAY CARE

*Licensed Day Care  
All Ages*



*Rosedale Park Area*

(313) 378-8498  
(313) 740-7076

### "Supporting the Local Landscape"

1759 21st Street  
Detroit, MI 48216  
313.655.2344  
[detroitfarmandgarden.com](http://detroitfarmandgarden.com)



**Providing Detroit's communities with quality farming, gardening and landscape supplies including: topsoil, compost, mulch, aggregates, organic fertilizer and pest control, feed, seeds, tools, vintage garden furniture and more! We Deliver!**

## In Memoriam William W. Brown

**July 5, 1930 – November 10, 2012**

Longtime Rosedale Park resident, William W. Brown, was laid to rest on Nov. 17, 2012. Mr. Brown, who was the president of the Rosedale Park Radio Patrol, worked tirelessly to improve the lives of others. He was immersed in the culture of Rosedale Park and was famous for being at every function or meeting. He had many friends and knew just about everyone and everything that was going on in the community and the City.

Mr. Brown was a man on the move. He spent much of his 82 years fulfilling his unspoken mission of helping others. It was not unusual for him to be out on radio patrol in the middle of the day or in the middle of the night because he had gotten a call from a neighbor about some suspicious activity. He had to investigate and run the criminals out of the neighborhood. It was not unusual for him to jump into his car and drive to another state to help someone in need.

His passion was fishing. He would often round up grandkids, sisters or buddies and head out to some of his favorite spots.

Another volunteer activity that he was passionate about was delivering food to homebound seniors with the Meals On Wheels programs.



*Ora and William Brown.*

Mr. Brown served on the usher board at the Tabernacle Missionary Baptist Church where he and his wife, Ora, had been members since the late 1950s.

In his earlier years, he worked as a union representative and worked on political campaigns, and was a precinct delegate.

William Brown will truly be missed. He touched many lives in many different ways. We can all thank him for the memories he left with each and every one of us. He taught us that we all can make a difference. His dedication to family, friends, community and city was part of what he did every day and we can all aspire to do the same. His untiring spirit will always be remembered and his mission of helping others and working in the community will carry on in the hearts of all who knew him.

*By – Kathy Roland*

## The Park Players Presents *Dreamgirls*



*Dreamgirls*, the 1981 Broadway musical, was nominated for 13 Tony Awards and won six. It's based on the real-life experiences of such R&B acts as James Brown, the Supremes and the Shirelles. Follow "The Dreams," a trio of young female singers from Chicago, as they go on to become superstars, and soon learn the true cost of fame is higher than they imagined.

All performances are at the North Rosedale Park Community House, 18445 Scarsdale, Detroit, 48223.

### **DATES AND TICKET PRICES**

**Friday, March 15, 6:30PM, Opening Night Dinner Theater, \$30**

**Saturday, March 16, 8 PM, Evening Performance, \$18**

**Sunday, March 17, 1 PM, Vacant Property Task Force Benefit (a), \$25**

**Friday, March 22, 8 PM, Evening Performance, \$18**

**Saturday, March 23, 7 PM, Wine and Cheese, \$25**

**Sunday, March 24, 2 PM, Soup and Salad, \$24**

**Friday, April 5, 8 PM, Evening Performance (b), \$18**

**Saturday, April 6, 8 PM, Closing Night, \$18**

- (a) Proceeds from the March 17 performance support the Grandmont Rosedale Vacant Property Task Force, a group of dedicated resident volunteers working to address problems associated with abandoned homes in the community.
- (b) Fundraiser for the North Rosedale Park Civic Association.

For information (or reservations for the non-benefit performances), please call Marcia Closson at 313-835-1103 or check our blog at [parkplayers.wordpress.com](http://parkplayers.wordpress.com). E-mail: [parkplayersnrp@gmail.com](mailto:parkplayersnrp@gmail.com).

## 2013 RPIA Banquet – A Salute to Our Neighbors

By Chris Remus

Our 2013 Rosedale Park Improvement Association Banquet was held on January 25th at the Community House. The theme of our banquet was “saluting our neighbors.”

The first portion of our banquet was dedicated to the memory of Mr. William Brown. Mr. Brown made countless contributions to our community; among other roles, he was the president and tireless worker for the Rosedale Park Radio Patrol. Mr. Brown died in November 2012. Dorothy Roman, Kathy Roland and Stacy Pugh shared recollections of Mr. Brown. A certificate of appreciation was presented to Krista Brown-Hamilton (Mr. Brown’s daughter) and Kennedy Hamilton (Mr. Brown’s granddaughter). Rosedale Park is a better place because of William Brown!

Our outgoing board member, Deacon Glynn McKnight, then led a blessing of the food. Our meal was catered by Charles and Nina Walker, the former owners of Spice, a carryout restaurant in Grandland that, unfortunately, closed in 2012. The Walkers are now operating a catering business, Chef Charles Food Service, out of the Brightmoor

Community Center. Once again this year everyone was pleased with the meal.

After dinner and a delicious dessert, incoming President Stacy Pugh and outgoing President, Mary McLeod presented recognition awards to a few of the many hard working volunteers who hold our community together.

Two residents were recognized for their tireless efforts behind the scenes as members of RPIA Board Committees: Jill Laufer for the Vacant Property Committee and Denise Beauregard for the Code Enforcement Committee.

The third award was presented to Clarendia Webb, a North Rosedale Park Resident who has spearheaded and nurtured the cooperation and collaboration between the Grandmont Rosedale neighborhoods and the 6th and 8th Police Precincts. This partnership has resulted in monthly Safety Meetings, coordination of individual Radio Patrols, local crime reporting and many other efforts aimed at reducing crime through vigilance and coordination among all neighbors. Ms. Webb is



*A certificate was presented to the family of William Brown in recognition of his years of service to the community and the Radio Patrol*



*Chef Charles Walker and his cheesecake*



*Chef Charles Walker served a dinner of BBQ rib tips, chicken, roasted potatoes, macaroni and cheese, green beans and salad*



*Clarendia Webb, Nancy Bitzarakis, Richard Quick, Betsy Quick*



*Councilman James Tate addressed the audience. In the background, Stacy Pugh, Stephanie Young, Rhonda Pugh, Mary McLeod*



*Edmon Carmichael accepted the 2012 Winner's Circle Award for his block, Warwick between Grand River and Keeler*

also seen at many RPIA events volunteering in one capacity or another. We are pleased to call her an honorary RPIA member.

Then, Island beautification awards were presented by the Island Beautification Committee, Tina Castleberry, Gigi Mitchell and Judith Rogan. The following designations were awarded:

**First Place:** Artesian between Keeler and Grand River

**Second Place:** Warwick between Fenkell and Chalfonte

**Third Place:** Warwick between Keeler and Midland

**Most Improved:** Faust between Chalfonte and Fenkell

**Honorable Mention:** Grandville between Keeler and Fenkell

**Honorable Mention:** Rosemont between Fenkell and Chalfonte

**Honorable Mention:** Rosemont between Eaton and Chalfonte

**2013 Winner's Circle Award:** Ashton between Fenkell and Chalfonte

**2012 Winner's Circle Award:** Warwick between Keeler and Grand River

The Island Beautification Committee also announced that there will be free incentives for blocks to join in beautifying their islands this spring! They will let us know when details are available.

Following the Award Presentations, Federal District Court Judge Gershwin Drain swore in new board members: Stacy Pugh (President), Stephanie Young (Vice-President), Rhonda Pugh (Treasurer), Mary McLeod (President Emeritus) and board members: Edmon Carmichael, Dale Cathey, Jim Dwight, Taft Gaddy, Deborah Gore, Dion Johnson, Dorothy Roman and Donna Wilson. Detroit Councilman James Tate presented an Award of Recognition to the Board for their service to the community which was signed by every member of the Detroit City Council.

The evening continued with music provided by Q Sound Entertainment. There was dancing and more socializing. We saluted our many neighbors, and in the process, had a very enjoyable evening. Our banquet is always on the fourth Friday in January; mark your calendar now!



*Lucille Bridges and Shirley Houser of Artesian*



*Jay Steuer and Donna E. Wilson*



*Judge Gershwin Drain performed the swearing in of the new RPIA Board*



*Never too young to start learning the Hustle*



*William Brown's family--Kennedy Hamilton, Krista Brown-Hamilton, Jamie Hamilton*



*President Emeritus Mary McLeod and President Stacy Pugh presented a Certificate of Appreciation to Clarenda Webb*



*Tina Castleberry, Mary McLeod, Stacy Pugh*

## ROSEDALE RECYCLES

**10:00 am – 2:00 pm**  
**Third Saturday of each month**

Location:

Christ the King Church parking lot  
 South of McNichols & north of  
 Grand River Avenue on Pierson  
*To volunteer or for more information,  
 call 938-1133 or email rr@igc.org*

**PLEASE ENTER THE RECYCLING CENTER  
 FROM PIERSON.**

Traffic flowing one-way serves  
 everyone most efficiently.

### 2013

<b>MAR</b> 16	<b>APR</b> 20	<b>MAY</b> 18	<b>JUNE</b> 15
<b>JULY</b> 20	<b>AUG</b> 17	<b>SEPT</b> 21	<b>OCT</b> 19
<b>NOV</b> 16	<b>DEC</b> 21		

Household Hazardous Waste April 20;  
 Paper shredder on site June 15 & November 16.

We can recycle the following **CLEAN** items. ***SORT*** and ***SEPARATE*** the items as follows before bringing them to the Recycling Center.

**NEWSPAPERS:** Place into paper bags or tie in bundles. Inserts can be left inside. If it comes in a newspaper, it can be recycled with the newspaper.

**MIXED PAPER:** White and colored office paper, envelopes, junk mail, folders, construction paper, and cardstock. ***CANNOT BE RECYCLED:*** Tissue paper, receipts, napkins, wrapping paper, and paper towels.

**GLOSSY PAPER:** Magazines, catalogs, and flyers. Keep separate from newspapers or mixed paper.

**BOOKS:** Bound, hardcover, paperbacks, and telephone books. No magazines in with books.

**CARDBOARD:** Brown, gray, white interiors; corrugated cardboard boxes; cereal boxes, shoe boxes, Kleenex boxes; paper grocery bags; ***EMPTY, CLEAN, and FLATTEN.***

**ASEPTIC CARTONS:** Milk, soymilk, and juice cartons. Remove plastic top, ***RINSE***, flatten & save space.

**GLASS BOTTLES & JARS:** Separate by color—clear, brown, green. ***RINSE*** and ***REMOVE TOPS***; recycle metal lids with metals. ***NOT ACCEPTED:*** Plexiglas, Pyrex, window glass, drinking glasses, or light bulbs.

**METALS:** No need to separate: tin or metal cans; copper, brass, aluminum foil, pie pans or cans; ***RINSE*** and ***REMOVE LABELS***; flatten if possible to save space.

**PLASTICS:** Remove caps and tops and discard unless labeled as recyclable. Labels can be left on containers. Sort according to number on bottom of containers:

**PLASTIC BAGS:** 1, 2 & 4 plastic grocery, dry cleaning, & newspaper bags are accepted. ***NOT ACCEPTED:*** Bubble wrap, garbage bags, Ziploc food bags. Bags must be clean and dry, receipts removed.

**BATTERIES:** Household batteries only: AAA through D, 9 volt, and cell phone batteries.

### Simplify with Camille

Home Organizing Services

#### Camille Kirksey

Professional Organizer

Phone: (313) 731-2287

Web: [about.me/Simplifywithcamille](http://about.me/Simplifywithcamille)

**"Proud Resident of Rosedale Park  
 Since 2009"**



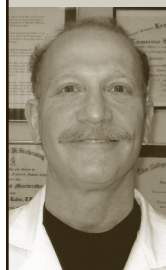
**ROBINSON REALTY  
 & MANAGEMENT GROUP**

Cheryl V. Davis  
 Managing Broker

Cell: (313) 477-4564  
 Office: (248) 593-9494 ext. 41  
 Office Fax: (248) 593-9696  
[cheryld@rrmgus.com](mailto:cheryld@rrmgus.com)  
[www.rrmgus.com](http://www.rrmgus.com)

### Dr. Lawrence Rubin

Diplomate, American Board of Podiatric Surgery



#### FOOT & ANKLE SPECIALIST SINCE 1979

Treating all foot & ankle problems  
 Medical • Surgical • Orthopedic • Diabetic Care

18530 Grand River, Detroit • (313) 273-9400  
 2 blocks west of the Southfield Freeway



## "LOVE WHERE YOU LIVE" ANTI-LITTER CAMPAIGN

In an effort to reduce litter and illegal dumping in the community, the Grandmont Rosedale Beautification Task Force is launching a "Love Where You Live" (LWYL)

campaign. Modeled on a successful anti-littering campaign in England, LWYL aims to inspire, encourage, and enable us to make where we live, work, and play the kind of place we want it to be.

LWYL is based on five key principles:

- (1) Encourage personal responsibility and positive action,
- (2) Work in partnership with neighbors to reduce litter,
- (3) Take responsibility for keeping your own immediate area clean,
- (4) Raise awareness and education about the prevention of littering,
- (5) Make it easy for people not to drop litter.

The Beautification Task Force plans an ongoing series of activities and opportunities that will allow everyone in the Grandmont Rosedale community to get involved. It's simple – it's easy – a clean environment makes us all feel great – love where you live!

### JOIN THE CAMPAIGN ON MARCH 23

To launch their campaign, the Beautification Task Force invites you to join them on Saturday, March 23 in a massive, volunteer-driven first annual "Grand River Clean Sweep." Neighbors and businesses will unite to sweep, weed, scrub, pick up trash, and just generally make the whole street clean. To sign up to volunteer, call Sustainable Communities Program Manager Becki Kenderes at 313-387-4732, ext. 101 or email [bkenderes@grandmontrosedale.com](mailto:bkenderes@grandmontrosedale.com). Volunteers will meet at the GRDC building (19800 Grand River) at 9:30 AM to receive maps and instructions.

### SIGN THE PLEDGE

Can't make it on March 23? No problem! You can still join the campaign. You can sign a pledge card, and in exchange for your promise to keep Grandmont Rosedale clean, you will receive a LWYL window decal or litter bag for your vehicle (while supplies last). Pledge cards available at the GRDC office starting March 23.

### DONATE YOUR RETURNABLES TO THE CAUSE

To raise funds for the LWYL campaign, the Beautification Task Force will be accepting your returnable bottles at GRDC during the second week of March (3/11 - 3/15). Bring your clean bottles and cans, bagged in black plastic bags, to the GRDC building during normal business hours, Monday through Friday.

### FUTURE EVENTS AND ACTIVITIES

Be on the lookout for future LWYL events and activities. In the coming months, task force members will be collecting "pledge cards" (promises from residents and business owners to help keep the community clean) and organizing routine clean-ups. To find out more information, contact GRDC Sustainable Communities Program Manager Becki Kenderes at 313-387-4732, ext. 101, or visit [www.facebook.com/GrandmontRosedaleLWYL](http://www.facebook.com/GrandmontRosedaleLWYL).



# PANDA

Delicious Chinese Food to Take Out

**OPEN 7 DAYS**  
 M-Th 11a-11:30p  
 F-Sat 11a-12:30a  
 Sun 12n-11:30p

*Special Lunch Prices*  
**12 Shrimp / \$2.50 every day**

In Grandland behind Metro Foodland • (313) 837-3771

**Law Offices**

**Haroutunian Licata Haroutunian, PC**  
 Wills, Trusts, Probate, Divorce, Litigation, Real Estate

Edward L. Haroutunian  
 Krista Licata Haroutunian

Susan Licata Haroutunian,  
 of counsel

**248-594-9071**

email: [ELH@HLHPC.COM](mailto:ELH@HLHPC.COM)

*Free Consultation*

**✱ Rosedale Park Residents since 1972 ✱**

# COMPUTERS



# \$200

**SAVE**

\$

**(313) 218-4888**

[www.callwillie.com](http://www.callwillie.com)




## Introducing MyGrandmontRosedale.org!

Ever wish that there was one website you could visit to find out what is happening throughout the Grandmont Rosedale neighborhoods? Well, now there is. MyGrandmontRosedale.org is your new information gateway to the Grandmont Rosedale communities.

MyGrandmontRosedale.org is sponsored by all five of the Grandmont Rosedale area neighborhood associations, as well as the Grandmont Rosedale Development Corporation.

The idea for a web site that includes comprehensive information and listings for all of Grandmont Rosedale came out of last year's neighborhood-wide Visioning event. Thanks to the hard work of several neighborhood residents and GRDC staff, as well as support from Detroit Local Initiatives Support Corporation, that idea has now come to fruition as MyGrandmontRosedale.org.

### CHECK OUT THE NEW SITE

Take a test drive on MyGrandmontRosedale.org and you'll find positive stories about the people and places in the community, information about local businesses

and neighborhood amenities, as well as profiles of elected neighborhood officers, contact information for all community organizations, and a comprehensive calendar of upcoming events and activities in the Grandmont Rosedale community. We've also included a resource page with important contact information and helpful tips on a variety of topics.

### EVERYONE CAN CONTRIBUTE

The best part about MyGrandmontRosedale.org? Neighborhood residents can all contribute to the site's content by sharing stories, photos, and notices of upcoming events. Just follow the instructions you'll find on the site to submit items electronically.

So, take a look around. Explore the business directory, find a task force to join, learn about the cool things your neighbors have been up to, investigate the calendar listings to find out what's going on in the neighborhood. Then let us know about the cool things you've been doing by submitting your comments, photos, and stories.

## Rosedale Park Improvement Association Important Dates in 2013

### BOARD MEETINGS

Fourth Monday of each month at the GRDC offices,  
19800 Grand River, 7 PM

- February 25
- March 25
- April 22
- May 20 (third Monday due to Memorial Day)
- June 24
- [No July meeting]
- August 26 (if necessary)
- September 23
- October 28
- November 25,
- December 16 (third Monday due to Christmas)

### GENERAL MEMBERSHIP MEETINGS

Tuesdays at the North Rosedale Park Community  
House, 18445 Scarsdale, 7-9 PM

- March 12, May 14, September 10, November 12

### EVENTS

- Detroit Partnership Day--Saturday, March 23
- Neighborhood Open House--Sunday May 5
- June Day Picnic--Saturday, June 1
- 30-Block Garage Sale--Saturday, June 22
- Holiday Breakfast--Saturday, December 7
- Annual Banquet--Friday, January 24, 2014

Al Baumgardner  
Co-Owner

Jim Baumgardner  
Co-Owner

### **BAUMGARDNER MECHANICAL, INC.**

Heating, Cooling, Plumbing & Electrical  
24850 W. McNichols  
Detroit, MI 48219

Licensed & Insured  
#71-04661

(313) 537-1600  
Fax (313) 537-2801

*Michael C. Hudgins, D.D.S.*  
GENERAL DENTISTRY

19001 GRAND RIVER AVENUE  
DETROIT, MI 48223

TELEPHONE (313) 838-6679



## Grandmont Rosedale Development Corporation, *continued from page 5*

this invitation and e-mail address with other neighbors and friends who also live in the Grandmont Rosedale area.

**NOTE:** This alert system is designed to help increase our awareness for our own personal safety and/or to show possible trends and to help increase the arrest and prosecution rate of criminals. This alert system is not to be used for community announcements about programs

or activities, but only for reporting suspicious or criminal activity or crime prevention tips. We also ask that people not "reply" to any given incident via the system, but instead to direct comments to [info@grandmontrosedale.com](mailto:info@grandmontrosedale.com) or call and leave a message at 313-387-4732, ext. 100.

### GET THE GRDC E-MAIL BLAST!

– GRDC sends out a regular weekly electronic newsletter, to let

everybody know what's going on in our neighborhood. Don't miss out on the latest! If you want to know what's happening, send us your e-mail address. We'll add you to our electronic mailing list and send you information of interest to the neighborhood. Send an e-mail to [info@grandmontrosedale.com](mailto:info@grandmontrosedale.com) and ask to be added to the list.

## VACANT HOUSE and SQUATTER ALERT

Do you have any vacant houses on your block? Do you suspect squatters may be occupying a vacant house on your block? If so, please give GRDC's Vacant Property Hotline a call at 313-387-4732, ext. 117, and report the addresses and any other information posted or available. You can also send an email to [vacantproperty@grandmontrosedale.com](mailto:vacantproperty@grandmontrosedale.com).

It takes a LOT of people to keep track of and take care of all of the vacant houses in our neighborhood. Please do all that you can to maintain the yards of the vacant houses on your block – pick up trash and flyers, and do what you can to make the house look occupied. If you are already taking care of vacant houses in your community, THANK YOU and thanks for being a good neighbor!



**Family  
is why  
we do  
it all.**

**Theodore C Brown Ins Agcy Inc**  
Theodore Brown, Agent  
Southfield, MI 48076  
Bus: 248-352-4757

We all feel the same commitment to care for our families. Helping you meet your insurance needs is part of my commitment to you. **Like a good neighbor, State Farm is there.®**  
CALL ME TODAY.



**State Farm™**

## Rosedale Park News Advertising Rates

Did you know that ads in the Rosedale Park News reach over 800 households in and around Rosedale Park for a very reasonable cost?

For more information and to place an ad, please contact Advertising Coordinator Pam Weinstein at 313-231-2244 or [weinstein148@ameritech.net](mailto:weinstein148@ameritech.net).

AD TYPE	COST/ISSUE
Business card	\$24
Quarter page	\$60
Half page	\$120
Full page	\$240
Personal classified*	Free for RPIA members!

**NOTE:** Prices above are for space only. An additional one-time set-up fee may be charged for new ads and revisions of existing ads. Fees vary depending on complexity of set-up. Copy for new and revised ads is due the 1st of the month prior to the month of publication.

\*For individuals and young people only – not for adult-owned businesses; must be text only, and 50 words or less.

## Rosedale-Grandmont Little League Sign-Up Coming Soon



For 20 years, the Rosedale-Grandmont Little League has provided a safe, nurturing environment for children to play ball. Big changes are in store this season at Stoepel Park, where we plan to fence in each diamond in preparation to host Little League Tournaments. Most of the fence installation will be done by parents and coaches.

Open to girls and boys ages 4-16, this neighborhood instructional league has teams in several divisions, including T-ball (boys and girls, ages 4-5); coach pitch (boys and girls, 6-7); girls softball (8-12; 13-16); minor baseball (boys and girls 8-9); and boys baseball (10-12; 13-16).

So join us! Sign up your kids, grandkids, neighbors' kids, and be part of a resurgence of little league in our neighborhood. This year's **Opening Day is Saturday, April 27th, 8 AM, at the North Rosedale Park Community House!**

To sign up, come to the Grandmont Rosedale Development Corporation office at 19800 Grand River (just east of Evergreen) on **Saturday, March 9 and Saturday, March 30, from 9 AM - 12 PM** to fill out an application and pay your fees.

You can also download an application form from the GRDC web site at [www.grandmontrosedale.com](http://www.grandmontrosedale.com) and mail it in, along with your check.

For more information, send an e-mail to [rglittleleague@aol.com](mailto:rglittleleague@aol.com).

Additions.Kitchens.Garages Vinyl Siding & Aluminum Trim  
Replacement Windows.Doors.Roofing  
Serving all your home improvement needs

### BG & SON HOME IMPROVEMENTS

734-420-2819

Bob Grutza  
734-216-5943

Brian Grutza  
734-564-7679

Licensed .. Insured

[BGHomeimprovement@gmail.com](mailto:BGHomeimprovement@gmail.com)

[Bgandsonhomeimprovement.com](http://Bgandsonhomeimprovement.com)

PROMPT • PROFESSIONAL • COURTEOUS

## Need help with your lawn?

### Call 1-888-4-LAWN HELP

(888-452-9643)

When it comes to creating thick, green lawns, depend on Greener Still, Inc. Our professional programs and experienced technicians can give you a lawn your whole family will enjoy. And, since we're a local company, we get to know you and your individual lawn needs. Depend on us to deliver what your lawn really needs...when it needs it...all season long.

- Fertilization/  
Weed Control
- Aeration/Seeding
- Expert Tree Care:  
Removal, Trimming,  
Spraying & Feeding
- Insect Control
- Sprinkler System  
Installation/Service

**Call Greener Still, Inc. today**  
**for a personal, no-cost evaluation of your lawn care needs.**

TURF & TREES

**greener still inc.** ...a gROWing concern

State Licensed  
and Insured

TURF AND TREE EXPERTS SINCE 1965

**Toll-free 1-888-4-LAWN HELP**

(888-452-9643)

Major credit cards accepted



**GET a membership.**  
**GET a great workout.**  
**GET on with your life.**

NEW YEAR'S SPECIAL!

**3 MONTHS For**

**\$99**

**SIGN UP TODAY!**

**Our Amenities Include:**

- Treadmills
- Free Weights
- Steppers
- Aerobics
- Personal Trainers
- And Much More!

**WE OFFER:**

**Weekly, Monthly, 6 Month and Annual Memberships**  
**With NO CONTRACTS to sign, Ever!**

**POWERHOUSE**  
EXPRESSGYM.FITNESS

**MON -FRI 6AM - 10PM SAT & SUN 9AM - 5PM**  
**18230 Grand River Ave. Detroit MI, 48223 PHONE: 313.397.3615**

## RPIA CONTACT LIST • 2013

### OFFICERS

#### **President**

Stacy Pugh (2013)  
14648 Greenview • 313-574-8889  
pughsl2002@yahoo.com

#### **First Vice President**

Stephanie Young (2013)  
14567 Rosemont • 313-334-8192  
sayoung2011@yahoo.com

#### **Second Vice President**

VACANT

#### **Treasurer**

Rhonda Pugh (2013)  
14877 Warwick • 313-837-0875  
rhondapugh@firstindependence.com

#### **President Emeritus**

Mary McLeod (2013)  
15075 Rosemont • 313-272-1704  
marytmcLeod@aol.com

### BOARD OF DIRECTORS

Edmon Carmichael (2013-2015)  
15440 Warwick • 313-836-7994  
eccgac@juno.com

Dale Cathey (2013-2015)  
14965 Stahelin • 313-837-8713  
dcathey1954@comcast.net

Jim Dwight (2013-2015)  
14810 Faust • 313-837-2252  
jldwight99@ameritech.net

Taft Gaddy (2013)  
14877 Warwick \* 313-522-4021  
watermansystems1@yahoo.com

Deborah Gore (2011-2013)  
15000 Glastonbury • 313-838-3243  
debbie\_gore@msn.com

Dorothy Roman (2013-2014)  
15330 Piedmont • 313-531-6641  
aa7636@wayne.edu

Dr. Dion Nathaniel Johnson (2013-2014)  
14948 Glastonbury \* 313-580-2208  
dr.dionjohnson@wayne.edu

Donna Wilson (2013-2014)  
14801 Penrod \* 313-3389767  
dowilson2@att.net

### CONTRACTORS & KEY CONTACTS

#### **Administrative Assistant**

Priscilla McDonald  
pamcdonald@live.com

#### **Administrator of Records**

Carol Snodgrass  
snodbusch@hotmail.com

#### **Block Captain Coordinators**

Stephanie Young  
Sayoung2011@yahoo.com

Pam Weinstein  
weinstein148@ameritech.net

Nancy Bitzarakis  
Nancy2061@aol.com

#### **New Neighbor Kit Coordinator**

Bill Nolan  
15017 Greenview • 313-838-9035  
sweetgrass59011@gmail.com

#### **RP NEWS Editor**

Amanda LeFranc  
rosedaleparknews@yahoo.com

#### **RP NEWS Advertising Coordinator**

Pam Weinstein • 313-231-2244  
weinstein148@ameritech.net

#### **RP NEWS Layout Designer**

Linda Liang

#### **Rosedale Park Radio Patrol**

Kathy Roland • 313-837-3897

### **RPIA MESSAGE HOTLINE**

**313-927-1089**  
**www.rosedalepark.org**

To sign up for the weekly electronic  
Rosedale Park newsletter,  
send e-mail to rpiablast@gmail.com

## *Rosedale Park News*

Serving a Friendly Neighborhood  
U.S.P.S. 077-610

The official publication of the Rosedale Park  
Improvement Association (RPIA) is published  
six times a year by RPIA at  
19800 Grand River, Detroit, MI 48223.

#### **Subscription Price**

RPIA Members, \$5 per year of \$45 annual dues.  
Non-members, \$5 per year.

Periodicals Postage paid at Detroit, Michigan.

**Editor:** Amanda LeFranc  
rosedaleparknews@yahoo.com

**Advertising Coordinator:** Pam Weinstein at  
313-231-2244 or weinstein148@ameritech.net

**Designer:** Linda Liang  
linda.liang@att.net

Postmaster: Send address changes to  
*Rosedale Park News*, PO Box 23113, Detroit, MI 48223

Printed by Spartan Forms  
24205 Ann Arbor Trail, Dearborn Heights, MI 48217  
313-278-6960

## **Calendar of Events**

### **MARCH**

Tues., March 12 .... RPIA General Membership  
Meeting, 7 PM

North Rosedale Park  
Community House

18445 Scarsdale,  
off Bretton Drive at Glastonbury

Sat., March 16 ..... Rosedale Recycles, 10 AM-2 PM  
18605 Pierson

Sat., March 23 ..... Detroit Partnership Day,  
10 AM-2 PM

Flintstone Park, Stoepel Park,  
Southfield Service Drive,  
Ramsay Park

### **APRIL**

Mon., April 1 ..... Advertising deadline  
for May/June issue of RP News

Weds., April 10 ..... Article submission deadline  
for May/June issue of RP News

Sat., April 20 ..... Rosedale Recycles, 10 AM-2 PM  
18605 Pierson

(This date includes household  
hazardous waste collection)

Coming in May: Neighborhood Open House,  
Sunday, May 5, 1 PM-5 PM

**ROSEDALE PARK  
IMPROVEMENT ASSOCIATION**

P.O. Box 23113  
Detroit, MI 48223  
313-927-1089

**Editor:** Amanda LeFranc  
rosedaleparknews@yahoo.com

**ROSEDALE  
GRADUATES:  
Send Us  
Your News**

The Rosedale Park News is happy to recognize recent high school or college grads from our neighborhood. Proud parents, spouses, and graduates are invited to send notices to [rosedaleparknews@yahoo.com](mailto:rosedaleparknews@yahoo.com).



**ROSEDALE RECYCLES**

**Saturday, March 16  
Saturday, April 20  
10 AM - 2 PM  
18605 Pierson Street**

**City living is great.  
It's best in  
Rosedale Park!**