



Rosedale Park News

Serving a Friendly Neighborhood

Volume LXX • Number 2

Rosedale Park • Detroit, Michigan 48223

March/April 2012

www.rosedalepark.org

Read All About It!

Support Your Neighborhood – Your Dues Are Due!!

By the time you receive this March/April issue of your ROSEDALE PARK NEWS, you will already have received the notice for your 2012 Rosedale Park Improvement Association dues. If you have already paid, please accept our sincere thanks. If you haven't quite gotten around to it, please write your check today.

YOUR DUES PAY THE BILLS

Dues payments from Rosedale Park residents are the main source of income for our neighborhood association. Check out the budget and financial report in this newsletter on page 15 for the details – there you'll see that for 2011, our total income was almost \$36,000; about \$29,000 of that sum came from YOU, the committed residents of one of the best neighborhoods in Detroit.

It's that commitment – in the form of your financial support – that makes our neighborhood safer, cleaner, friendlier, better informed. Your RPIA officers and board members work hard throughout the year to make sure we manage the funds you give us as effectively and productively as possible.

CHECK OUR BUDGET – LOTS GOING ON!!

We encourage you to read over the details of our budget. See for yourself the broad array of programs that we support – everything from social events (June Day picnic, Holiday Pancake Breakfast, annual banquet, 30-block garage sale) to clean-ups and civic engagement activities (Detroit Partnership Day, Angel's Night, Detroit Pride Day). We stretch your dollars to cover as many good efforts as we possibly can.

This issue of the ROSEDALE PARK NEWS is being mailed out to every household in Rosedale Park – we want everyone to read our news and see that while "City living is great. It's best in Rosedale Park." We encourage everyone to pay their dues – do your part and pay your share to help us keep building the spirit of community in Rosedale Park.

Annual dues are \$45 should be [\$25 for Outer Drive residents) – make your check payable to RPIA and mail it to RPIA, P. O. Box 23113, Detroit, MI 48223.

Detroit Partnership Day – March 31, 2012

Those energetic, enthusiastic young people from University of Michigan-Ann Arbor will once again be performing a day of service to our community. Detroit Partnership Day (or "DP Day," as it is known) began in 2000, and every year has brought hundreds of UM students to partner with Detroiters in a variety of service and clean-up projects, an excellent "spring cleaning" event for our entire northwest Detroit community.

This year's Detroit Partnership Day will be held on Saturday, March 31 from 9 AM - 3 PM at Flintstone Park (also known as Rosemont Acacia Park). Rosedale residents are urged to come out for the day and join the UM volunteers in raking up leaves, trimming back bushes, pruning trees, and generally sprucing up our neighborhood park and getting it ready for spring activities for youngsters and adults alike.

For more information and to volunteer, contact RPIA 2nd Vice President Stacy Pugh at 313-574-8889.

IN THIS ISSUE

President's Message.....	2
Block Captains' Corner	3
RPIA Board Retreat/Meeting Summary.....	4
Neighborhood Open House	4
Easter Egg Hunt Retires	4
Join Your Neighbors at the Powerhouse Gym!	5
Little League Sign-Up.....	5
Spring Highlights from Rosedale Recycles	7
Park Players Announce Spring Musical!	7
Code Enforcement Committee Update.....	8
GRDC Updates	9
2012 RPIA Banquet.....	10
2012 Block Captains Listing.....	12
2011 Performance to Budget.....	14
Important Dates in 2012	14
2011 and 2012 Finances.....	15
2011 Membership Dues Paid	16
RPIA Contact List.....	19
Calendar of Events.....	19

General Membership Meeting



Tuesday, March 13 at 7 PM
North Rosedale Park Community House
18445 Scarsdale
(off Bretton Drive at Glastonbury)
All Residents Welcome!



President's Message

As I write this, my first message as RPIA Board President, the sun is shining and the grass is green in the middle of a Michigan winter! For me, this serves to underscore the unpredictability of

the Michigan climate, including weather, economy and politics. We seem to be experiencing extremes on all fronts, which can be very unsettling.

Each day, however, I see at least one reason to be hopeful for our community. As I walk my dog I encounter strangers and acquaintances with ready smiles and friendly "hello's!" I observe neighbors picking up trash on their own property as well as from the public spaces we all share. There are new roofs, windows, doors, driveways, and porches being completed at many houses, and new trees that have been planted and are waiting for the "real" spring to bring beauty and shade to our streets. Neighbors are looking out for each other and checking in with each other when there appears to be something amiss on their block.

As a community leader I receive communication about initiatives taking place around us, as well as all over the entire city of Detroit. There are many individuals, organizations and companies tackling one or more of the problems we are all facing. Here are a couple of recent examples:

- A local state representative invited several community organization and block-club leaders to an informational meeting at Northwestern Christian Church in Detroit (Ilene and Schoolcraft). This meeting was to introduce us to a Home Repair Project sponsored by an organization called Rippling Hope (out of Austin, Texas) in partnership with Motown Mission, Northwestern Christian Church and the Michigan Region of the Christian Church (Disciples of Christ). This effort brings together volunteers from around the country and locally to provide simple home repairs such as painting, weatherization, minor plumbing repair, etc., to members of the community. The emphasis in this endeavor is on bringing communities together in a positive way that focuses

on improvements to individual properties as well as general clean-up and maintenance of the surrounding area. Each applicant interested in this service is required to be a current member of their neighborhood organization and to contribute what they can to the cost of materials for their individual project. More information is available on the RPIA eBlast and will be discussed at our General Membership meeting on March 13. Applications can be obtained by calling the hotline, pick-up at the General Membership meeting or by contacting me at marytmcLeod@aol.com. The deadline for applications is April 1.

- Again this year, students from the University of Michigan will be in our neighborhood on March 31 to help to clean up Flintstone Park and the Southfield service drive. Partnering with volunteers from other areas of the state and the country allows us the opportunity to spread the word that "City Living is Great – It's Best in Rosedale Park" while we get support in keeping it clean and safe.
- Most of you have likely noticed the considerable investment in improving the appearance of our local McDonald's restaurant. The owner, Deborah Virgiles, has been a long-time supporter of our neighborhood and has shown her commitment through these upgrades to the façade and interior of the restaurant. At the same time, she presented the RPIA Board with a donation of \$250 to support our efforts in maintaining and improving our community. This kind of engagement with businesses in our community is essential. Buy local!

This year, the RPIA Board is hoping to build on some past improvements as well as to engage the membership in exploring new ways for us to celebrate the beauty and unity of our neighborhood. What can we do to engage our youth in understanding the meaning of and need for civic commitment? How can we best engage the many talents of our neighbors in joint efforts on behalf of us all? We welcome your input. Please speak up and join up as we emphasize the "Improvement" in RPIA.

Mary McLeod

Mary McLeod, President
Rosedale Park Improvement Association

HELP WANTED: Facebook and Twitter Administrator

Rosedale Park Improvement Association needs YOU! We have a Facebook page and a Twitter account. Now all we need is someone to maintain them. Maybe you're an internet whiz, or maybe you're a high school or college student in need of some community service hours? Whoever you are, if you are interested in getting into the social media groove and getting the word out about our terrific neighborhood, send your name and a short statement about why you are interested in this challenge to weinstein148@ameritech.net.

Block Captains' Corner

WHERE DID WINTER GO?

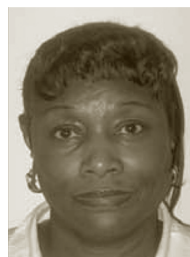
Last year as I wrote this month's article we had just had a week of two snowfalls of at least six inches each and sub-zero wind chill temperatures! I don't think we've even had a total of six inches this season, but I'm not complaining. Spring is just around the corner and even though we may have more snow in the forecast we need, to start the planning for the coming season.

You may have noticed that new people have moved in over the winter and now is the time to get them their New Neighbor Kit, to invite them to attend one of the police/community crime prevention meetings, and to orient them to the fact that they don't just live on a block or in a neighborhood but they live in a community that takes pride in its homes, its people, and its activities. Another good way to orient new neighbors to the community is to ask them what special interests or talents they have and how they would like to use those talents or interests to contribute to the community – either in the neighborhood, the Association, or both!

With knowledge of who we are and who we have as neighbors we can all work together to improve conditions in the community. Also, if we take the time to get to know our neighbors we can look out for them. Get your neighborhood watch information together so that all neighbors know contact information for each other and don't be afraid to call each other if something unusual seems to be going on. A "nosy" neighbor can be the best neighbor; they are often the best informed people on the block. They can alert the rest of us to anything out of the ordinary, and can also be a deterrent to people who would like to disrupt the neighborhood.

If we assist the board with getting the word out about the benefits the Association offers and what projects and programs are supported by their dues of \$45.00 per year (that's less than \$1.00 per week!), we should be able to get closer to our goal of full participation in dues payment as well as participation in programs and projects. Some of the new neighbors may not be familiar with the idea of association dues in other than a condominium community. We need to educate them to the benefits we receive when we act together as an association as opposed to individually attempting to reach certain goals for the community.

Block captains meet quarterly get updated information on the happenings in Rosedale Park. They should be sharing that information with you. RPIA members, if you do not hear from your block captain(s), take the initiative and inquire of them, "What's new?" You will find a list of current block captains and contact information in this issue (see pages 12-13). Let's keep working to revitalize our blocks to action and involvement and to improve our neighborhoods. Working together is all it takes! Feel free to contact us with any questions or concerns.



Dorothy McKnight
glynnndot@yahoo.com



Molly Eklund-Easley
scionmee@msn.com

Block Captain Coordinators

Tribute to Excellent Block Captain

This fond appreciation was submitted by Carolyn Akpe, one of the residents on Dorothy McKnight's block. Dorothy is an outstanding example of what a block captain can be:

"Dorothy McKnight is our Block Captain for Artesian between Eaton and Lyndon. She is a model neighbor given to helping others, encouraging care, respect and pride in our block and neighborhood. She embodies the Rosedale Park spirit of preservation of the good life and relationships between neighbors. She participates in RPIA activities and engages new neighbors in

being active participants in Rosedale Park life. She volunteers and leads. She motivates others to know their neighbors, knocks on doors with a smile. She informs and educates us. She directs successful problem solving and has helped us help each other in times of joy, pride or misfortune. She represents the open heart and helping hands of leadership. We are happier, safer and prouder due to her efforts and example. With all this said, she remains a remarkably loving and gracious neighbor and friend."

Need a New Neighbor Kit?

Kits are available from coordinator, Bill Nolan, who can be reached at 313-838-9035 or sweetgrass59011@gmail.com.

Summary of RPIA Board Retreat/Planning Meeting of January 29, 2012

By Priscilla McDonald, RPIA Administrative Assistant

As is the tradition, RPIA officers and board members came together on Sunday, January 29 for their annual retreat/planning meeting to organize RPIA's work for the year 2012.

Highlights of the planning meeting included the following:

- Introduction of all new board members
- an overview of the 2012 board orientation packet, including board by-laws and responsibilities
- an update on the proposed neighborhood-wide special assessment fee

- a recap of the previous year's budget and the proposed budget for 2012

The board also formed the various RPIA committees and discussed goals for each committee in the coming year.

For all the details and complete minutes of the retreat, go to the RPIA website at www.rosedalepark.org.

7th Annual Neighborhood Open House • Sunday, May 6, 2012

If you know of someone who's looking for a home, there's no better time than the annual Grandmont Rosedale Neighborhood Open House! Now in its seventh consecutive year, the neighborhoods of North Rosedale Park, Rosedale Park, Grandmont and Grandmont #1 are again inviting prospective homebuyers to tour homes for sale in our area. The Open House will run from 1 PM until 5 PM on Sunday, May 6th and will include recently rehabilitated homes

by our partner, the Grandmont Rosedale Development Corporation (GRDC), bus tours of the neighborhoods, and information on tax abatement and financing.

If you have a home for sale, consider including it in the Open House. Each year, homes have sold as a result of this well-publicized and popular event. For more information, contact Mary Sue Schottenfels at 313-909-0760. To volunteer, call Kevin Johnson, 313-835-6136.

RPIA Easter Egg Hunt Retires

By Chris Remus

After careful discussion, the RPIA board voted unanimously at its annual retreat in late January to retire the traditional Easter Egg Hunt event sponsored in years past by RPIA on the Saturday before Easter.

There were a couple of reasons for this decision. Being an outdoor event, it is weather dependent, and often spring weather can be cold, damp, and rainy. However, the major factor was that, over the years, turnout and participation at the Easter Egg Hunt have been steadily declining.

The board discussion of this issue pointed instead to possibly sponsoring a summer family event in place of the egg hunt -- perhaps an outdoor movie night on

the grounds of the Community House? If anyone has suggestions for a family-oriented event this summer, please contact the hotline (837-PARK) or a board member to let us know.

In the spirit of community collaboration and cooperation, North Rosedale Park has extended an invitation to Rosedale Park families with children under the age of ten to join them in their Easter Egg Hunt on Saturday, April 7 at the North Rosedale Park Community House; this event is free. Volunteers to help with this event are needed. Please watch the e-Blast for further details or e-mail Board member Chris Remus (chris.remus@sbcglobal.net).

Washer & Dryer Repair Since 1980

Washer

Dryer

A-1

Service

No Service charge if repaired.

Servicing most makes & models.

Rosedale Park Resident. (313) 838-1149

**Rosedale Veterinary
House Calls**

Andrew A. Benigna, D.V.M.

Park Resident

Surgery ♥ Hospitalization ♥ Emergency Services

Call 328-8110

JOIN YOUR NEIGHBORS AT THE LOCAL POWERHOUSE GYM!

Several area residents are urging their neighbors to join them in exercising at our local POWERHOUSE GYM, conveniently located right in our neighborhood, at 18230 Grand River. "It's good for your health, it's good for your waistline, and it's good to support our local businesses," commented Rosedale resident Dorothy Roman, who has lost 40 pounds since becoming active at the gym.

"I'm trying to rebuild muscle mass," explained fellow Rosedale resident Pam Weinstein. "As we age, our muscles get smaller and weaker unless we do something active to rebuild our strength. A short workout twice a week at the Powerhouse over the past six months has done wonders for my strength and agility," she added.

"The staff at Powerhouse is always friendly and very helpful," stated Michael Mooney, a longtime member of the gym. "Local owner Joseph Braxton and his staff make you feel right at home and will lead you step by step to develop an individualized exercise program that's right for you," he said.

"You don't have to be some serious weight-lifter to feel at home at the Powerhouse," Weinstein pointed out. "It's a comfortable atmosphere for the average person who's just trying to improve their fitness - there's all kinds of people participating, men and women, younger and older -- everybody's friendly," she emphasized.

The gym has an impressive variety of equipment, including weight machines, free weights, ellipticals, treadmills, stationary bikes and AMT's. Memberships at the Powerhouse are flexible and varied, ranging from



Dorothy Roman is a regular at the neighborhood Powerhouse Gym.

one week to one month to three months (\$99) or longer. Call for more information at 313-397-3615.

And take action - come join us!

Sign up and have fun!

Rosedale-Grandmont Little League Sign-Up Coming Soon



Calling all boys and girls! It's time to sign up for Rosedale-Grandmont Little League. Open to kids ages 4-16, this neighborhood instructional league has teams in several divisions, including t-ball, coach pitch, junior baseball and junior softball, senior baseball and senior softball.

To sign up, come to the Grandmont Rosedale Development Corporation office at 19800 Grand River (just east of Evergreen) on Saturday, March 10 and Saturday, March 24, from 9 AM - 12 PM to fill out an application and pay your fees.

You can also download an application form from the GRDC web site at www.grandmontrosedale.com and mail it in, along with your check.

For more information, send an e-mail to rglitleleague@aol.com.

**Have you got a favorite local business in the neighborhood?
Tell us about it - send your write-up to rosedaleparknews@yahoo.com!**

ROSEDALE RECYCLES

10:00 am – 2:00 pm
Third Saturday of each month

Location:

Christ the King Church parking lot
 South of McNichols & north of
 Grand River Avenue on Pierson
*To volunteer or for more information,
 call 938-1133 or email rr@igc.org*

**PLEASE ENTER THE RECYCLING CENTER
 FROM PIERSON.**

Traffic flowing one-way serves
 everyone most efficiently.

2012

JAN 21	FEB 18	MAR 17	APR 21
MAY 19	JUNE 16	JULY 21	AUG 18
SEPT 15	OCT 20	NOV 17	DEC 15

Household Hazardous Waste April 21;
 Paper shredder on site June 16 & Dec 15.

Additions.Kitchens.Garages Vinyl Siding & Aluminum Trim
 Replacement Windows.Doors.Roofing
 Serving all your home improvement needs

BG & SON HOME IMPROVEMENTS
 734-420-2819

Bob Grutza
 734-216-5943

Brian Grutza
 734-564-7679

Licensed .. Insured
BGHomeimprovement@gmail.com
Bgandsonhomeimprovement.com

We can recycle the following **CLEAN** items. ***SORT*** and ***SEPARATE*** the items as follows before bringing them to the Recycling Center.

NEWSPAPERS: Place into paper bags or tie in bundles.
 Inserts can be left inside. If it comes in a newspaper, it can be recycled with the newspaper.

MIXED PAPER: White and colored office paper, envelopes, junk mail, folders, construction paper, and cardstock. ***CANNOT BE RECYCLED:*** Tissue paper, receipts, napkins, wrapping paper, and paper towels.

GLOSSY PAPER: Magazines, catalogs, and flyers. Keep separate from newspapers or mixed paper.

BOOKS: Bound, hardcover, paperbacks, and telephone books. No magazines in with books.

CARDBOARD: Brown, gray, white interiors; corrugated cardboard boxes; cereal boxes, shoe boxes, Kleenex boxes; paper grocery bags; ***EMPTY, CLEAN, and FLATTEN.***

ASEPTIC CARTONS: Milk, soymilk, and juice cartons. Remove plastic top, ***RINSE***, flatten & save space.

GLASS BOTTLES & JARS: Separate by color—clear, brown, green. ***RINSE*** and ***REMOVE TOPS***; recycle metal lids with metals. ***NOT ACCEPTED:*** Plexiglas, Pyrex, window glass, drinking glasses, or light bulbs.

METALS: No need to separate: tin or metal cans; copper, brass, aluminum foil, pie pans or cans; ***RINSE*** and ***REMOVE LABELS***; flatten if possible to save space.

PLASTICS: Remove caps and tops and discard unless labeled as recyclable. Labels can be left on containers. Sort according to number on bottom of containers:

PLASTIC BAGS: 1, 2 & 4 plastic grocery, dry cleaning, & newspaper bags are accepted. ***NOT ACCEPTED:*** Bubble wrap, garbage bags, Ziploc food bags. Bags must be clean and dry, receipts removed.

BATTERIES: Household batteries only: AAA through D, 9 volt, and cell phone batteries.



Website: www eklund-easleylaw.com
 E-mail: molly@eklund-easleylaw.com

MOLLY EKLUND-EASLEY
 Attorney at Law

EKLUND-EASLEY LAW FIRM
 For all your family's legal needs

Rosedale Park Resident
 Since 1984

Phone: (248) 213-3909
 Fax: (248) 213-3911



PANDA
 Delicious Chinese Food to Take Out

OPEN 7 DAYS
 M-Th 11a-11:30p
 F-Sat 11a-12:30a
 Sun 12n-11:30p

Special Lunch Prices
 12 Shrimp/\$2.50 every day

In Grandland behind Metro Foodland • (313) 837-3771



Spring Highlights from Rosedale Recycles

By Margaret Weber

Rosedale Recycles reminds us that two special collections take place in the coming months. These special events are **in conjunction** with the normal monthly collection of newspaper, cardboard, metals, glass containers, plastics and Styrofoam that takes place on the third Saturday of each month between 10 AM and 2 PM, in the parking of Christ the King Church off Pierson, north of Grand River.

April 21--Special Household Hazardous Waste

Collection: paints, pesticides and herbicides; motor oil, car batteries, toxic household cleaners, rodent poisons, automotive fluids, electronic waste, outdated pharmaceuticals, sharps. NO TVs or smoke detectors.

ALSO on April 21, from 12-2 PM, the Detroit Works Project Long Term Planning is bringing the Roaming Table to Rosedale Recycles! The Roaming Table is a way to bring information and discussion about Detroit Works Project Long Term Planning into the community in an informal and fun way, meeting people where they are in their everyday lives. A handful of Long Term Planning affiliates come along with the Roaming Table to initiate conversation, record feedback and answer questions.

June 16--Paper shredder: on-site shredding of sensitive and personal documents such as tax records, bill statements, etc. The papers are emptied directly into the shredding machine inside the truck and taken for recycling.

Questions: rr@igc.org or 313-938-1133. Margaret Weber will reply.

The Park Players Announce Spring Musical!

Detroit's oldest community theater group, The Park Players, is proud to present URINETOWN: THE MUSICAL. All shows are performed at the North Rosedale Park Community House, 18445 Scarsdale. It's a short distance to travel to see some fine performances from long-time Park Players favorites and exciting newcomers, as well as to support the arts in our community.

For a synopsis and more about the musical, please visit <http://en.wikipedia.org/wiki/Urinetown>.



DATES AND TICKET PRICES:

Friday, March 16, 6:30 PM, Dinner Theater, \$30
Saturday, March 17, 8 PM, Evening Performance, \$16
Sunday, March 18, 1 PM, Soup and Salad Luncheon, \$22
Friday, March 23, 8 PM, Evening Performance, \$16

Saturday, March 24, 7 PM, Wine and Cheese, \$25
Sunday, March 25, 2 PM, Matinee Performance, \$16 (Students/Seniors \$14)
Friday, March 30, 7 PM, Evening Performance, \$16
Saturday, March 31, 8 PM, Evening Performance, \$16

Marcia Closson is eager to accept your reservation at 313-835-1103.

COMPUTERS

\$200

SAVE

(313) 218-4888

www.callwillie.com

Al Baumgardner
Co-Owner

Jim Baumgardner
Co-Owner

BAUMGARDNER MECHANICAL, INC.

Heating, Cooling, Plumbing & Electrical
24850 W. McNichols
Detroit, MI 48219

Licensed & Insured
#71-04661

(313) 537-1600
Fax (313) 537-2801



RPIA CODE ENFORCEMENT COMMITTEE

The Rosedale Park Code Enforcement Committee began meeting in September 2011. In an effort to maintain our beautiful neighborhood the code enforcement committee will partner with

the City of Detroit to enforce code violations.

Residents who would like to submit a complaint can do so via the RPIA website at www.rosedalepark.org or may call the hotline at 313-927-1089. Once a complaint is received from a resident a committee member will validate the complaint to determine if an actual violation exists, if there is in fact a violation, a letter will be sent to the resident asking that they mitigate the issue within 10 days or contact the committee to explain why the issue cannot be remedied. If the violation persists after 10 days, the City of Detroit will be contacted and the resident may be ticketed.

The Code Enforcement Committee will focus on the following violations;

- Individuals residing at a vacant or abandoned property (squatters)
- Parking of motor vehicle on the premises for 72 continuous hours
- Parking of vehicle on City berms (area between the sidewalk and the street)
- Parking of unlicensed or inoperable motor vehicle on the premises- including backyard
- Parking of commercial vehicle on the street
- Parking of commercial vehicle on the premises
- Garbage container left on the street or berm after 9 PM on the day of pick up
- High grass, weeds or plant growth (over 8" height)
- Accumulation of solid waste/debris on the premises
- Operating commercial use on property zoned residential
- Operating a business without proper zoning approval
- Improper placement of Garbage container on the premises (front yard)
- Unregistered rental property
- Illegal Signage
- Ice, snow or filth on sidewalks or right-of-way

This information is presented for educational purposes. All violation fines listed are first offense amounts. Fines increase with repeat offenses. Some fines are determined in court. Avoid tickets by following City Codes.

DETROIT CODE OF ORDINANCES:

Maintenance

- Structure or yard not maintained..... Fine: \$250
- Emergency conditions: sewage, no heat or electric, falling porches etc..... Fine: \$500
- Grass and weeds over 8" height Fine: \$50
- Ice, snow or filth on sidewalks or right-of-way Fine: \$100

Waste

- Yard waste not in paper bags Fine: \$200
- Boxes, crates outside refuse container..... Fine: \$200
- Brush, shrubbery or bulk trash exceeds approved size, or weight, more than four tires on bulk trash pickup... Fine: \$200
- Trash container out early or late..... Fine: \$100
- Animal waste on property Fine: \$200

Hazardous Waste

- Pet waste not bagged Fine: \$1500
- Burning solid waste Fine: \$1500

Dumping & Littering

- Failing to secure solid waste collection containers Fine: \$200
- Unlicensed and/or inoperable vehicle..... Fine: \$100
- Littering Fine: \$200
- Dumping on private or public property Fine: \$200
- Debris, garbage possible habitat for rodents Fine: \$100

Property Registration

- Rental Property Annual Inspection, single-family structure..... Fee: \$150
- Rental Property Annual Inspection, two-family structure Fee: \$230
- Failure to obtain certificate of compliance.... Fine: \$250

Law Offices

Haroutunian Licata Haroutunian, PC
Wills, Trusts, Probate, Divorce, Litigation, Real Estate

Edward L. Haroutunian Susan Licata Haroutunian,
Krista Licata Haroutunian of counsel

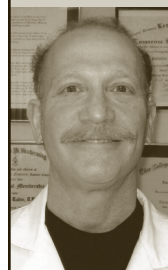
248-594-9071 email: ELH@HLHPC.COM

Free Consultation

✻ **Rosedale Park Residents since 1972** ✻

Dr. Lawrence Rubin

Diplomate, American Board of Podiatric Surgery



FOOT & ANKLE SPECIALIST SINCE 1979

Treating all foot & ankle problems
Medical • Surgical • Orthopedic • Diabetic Care

18530 Grand River, Detroit • (313) 273-9400
2 blocks west of the Southfield Freeway



SUSTAINABLE COMMUNITIES VISIONING WORKSHOP MARCH

17 – Mark your calendars and save the date! Plan to join GRDC for a Community Visioning Workshop on Saturday, March 17th, from 9 AM - 3 PM at New St. Paul Tabernacle, 15340 Southfield Service Drive (NOTE NEW LOCATION!). Registration and continental breakfast begins at 8:30 AM. This workshop will provide an opportunity for neighborhood residents to share ideas for making Grandmont Rosedale a stronger community.

In conjunction with a new program called Building Sustainable Communities, GRDC is spearheading an effort to create a comprehensive plan for improving the quality of life in our neighborhoods. Grandmont Rosedale is one of only three Detroit communities selected for this program, which could result in significant new resources to support neighborhood improvement projects.

Check the GRDC web site and the weekly GRDC eBlast for more details on this special opportunity (exact agenda, speakers, etc.). In the meanwhile, reserve your seat - contact Sustainable Communities Organizer Brittany Moore at 313-387-4732, ext. 116, or bmoore@grandmontrosedale.com. This workshop is free, but you must register to attend – deadline is Friday, March 9th. Continental breakfast and lunch will be provided.

HOME FOR SALE ON LONGACRE

– GRDC's home renovation and sales program continues on, with the latest project at 14205 Longacre, in the Grandmont neighborhood. This three-bedroom home is currently under construction and will be available for viewing and purchase very soon. NOTE: you could receive \$10,000 in down payment assistance if you qualify for a new mortgage on this home.



For more information, go to at <http://www.grandmontrosedale.com/homes/homesforsale.html>

DONATE YOUR CLUNKER! – Got an old car you need to get rid of? Skip all the hassle of trying to sell it yourself and instead donate it to GRDC. You'll get a tax deduction and GRDC will get the proceeds from the sale of your clunker. Make your donation to Charity Motors (313-255-1000), and designate GRDC to receive proceeds from the sale. Charity Motors will even pick up your car for free. To date, 53 families have donated their cars to GRDC, for a total of \$19,134.

Want more information? Contact Cathy Marshall at cmarshall@grandmontrosedale.com or 313-387-4732, ext. 103.

NEIGHBORHOOD SAFETY

MEETINGS – Remember to attend the Neighborhood Safety Meetings the 4th Thursday of every month at the North Rosedale Park Community House (18445 Scarsdale) at 6 PM.

FORECLOSURE PREVENTION

– If you or someone you know is in danger of foreclosure, DON'T DELAY. Foreclosure counselors are available from Southwest Housing Solutions. Homeowners who are behind on their mortgage payments should contact the free non-profit counselors immediately, while they still have options – **call 313-841-9641 TODAY** for an appointment with a counselor.

GRANTS FOR NEIGHBORHOOD

PARKS – GRDC's Community Security Program recently received two KaBoom! Let's Play Spruce Grants for Flintstone (Rosemont Acacia) Park and Ramsay Park. KaBoom! is a national non-profit dedicated to helping children by

creating playspaces. The Let's Play Spruce Grant is a collaboration with the Dr. Pepper Snapple Group to promote play as a key element of a healthy childhood (more information at www.kaboom.org). The grant awards are \$750 gift cards that will be used for general park maintenance. The Community Security Program will be working closely with local neighborhood associations to determine how best to spend the awards in the coming months.

VACANT HOUSE ALERT – Do you have any vacant houses on your block? If so, please give GRDC Vacant Property Intern Becki Kenderes a call at 313-387-4732, ext. 117, and give her the addresses (or send an email to info@grandmontrosedale.com).

NOTE: If the vacant house is in Rosedale Park, contact Debbie Kent instead: 313-402-9699. If the house is in North Rosedale Park, contact Clarendia Webb: 313-330-7844.

It takes a LOT of people to keep track of and take care of all of the vacant houses in our neighborhood. Please do all that you can to maintain the yards of the vacant houses on your block – pick up trash and flyers, and do what you can to make the house look occupied. If you are already taking care of vacant houses in your community, THANK YOU and thanks for being a good neighbor!

GET THE GRDC E-MAIL BLAST!

– GRDC sends out a regular weekly electronic newsletter, to let everybody know what's going on in our neighborhood. Don't miss out on the latest! If you want to know what's happening, send us your e-mail address. We'll add you to our electronic mailing list and send you information of interest to the neighborhood. Send an e-mail to tmccrory@grandmontrosedale.com and ask to be added to the list.



Our 2012 RPIA Banquet – A Good Time Had by All!

By Chris Remus

The Rosedale Park Improvement Association 2012 Banquet was a great success! Ninety-three tickets were purchased. Our special guest was Detroit City Councilman James Tate who administered the swearing in of the 2012 Rosedale Park Improvement Association Board. The evening began at 6 PM with a punch-bowl social. At 7 PM, board member Deacon Glynn McKnight led a blessing of the food. Our meal was catered by Spice, a local carry-out restaurant owned by Charles Walker; in planning the banquet, it was important to our board to support local businesses. Some board members had previously tried Spice's food and were pleased, and I can say with confidence that everyone was satisfied with the dinner Spice catered. The restaurant is located near the Grandland Shopping Center, 18354 Fenkell (at Penrod).

After dinner, outgoing RPIA president Carolyn Cruse provided an overview of 2011. With the number of vacant houses in the neighborhood and the decline of property values, RPIA faced many challenges last year. With the many responsibilities of the RPIA presidency, Carolyn gave us a few philosophical words on how she managed to keep a balance in her life: "Be Right with God, Be Right with Yourself, and Be Right with Your Neighbor."

Newly elected RPIA president Mary McLeod then joined Carolyn Cruse at the podium and together they presented special recognition awards to several residents: David Legg, for his work with organizing, composing and distributing the Rosedale Park eBlast; Nancy Bitzarakis, for her efforts in keeping all of us abreast of community activities, plus her countless neighborhood volunteer hours; Bonnie Mead, for her efforts in functioning as the interim editor of the Rosedale Park News; and Dorothy Roman, for her willingness to step up and temporarily serve as the advertising coordinator for the Rosedale Park News. Then, representing the Rosedale Park Garden Club, Tina Castleberry presented Home Depot gift-card awards to a number of blocks that have either improved or maintained the integrity of their islands.

The evening continued with music provided by Q Sound Entertainment; there was dancing and more socializing. As we're all aware, the last several years have been tough for the City of Detroit. Attending our RPIA banquet was more than just a social outing--it showed your support for the Rosedale Park Improvement Association. Thank you!



-L to R, Thom Gatson, Councilmember James Tate, Minty Kelly James, Mary McLeod, Stacy Pugh, Pam Weinstein, Stephanie Young, Deborah Kent, Deborah Gore, Glynn McKnight, Chris Remus.



Longtime Rosedale resident Bonnie Mead was honored for her many contributions to the neighborhood, and especially her recent stint as Interim Editor of the **ROSEDALE PARK NEWS**.



President Emeritus Carolyn Cruse and President Mary McLeod.



Rosedale residents filled the dance floor, led by President Emeritus Carolyn Cruse and Treasurer Thom Gatson.



Chef Charles Walker of Spice Restaurant, slicing up his fabulous cheesecake.



L to R, Gary Torgerson, Ken Schneider, Mary Schneider, Dale Reid.



L to R, Bernard Mack and former RPIA President Nancy Bitzarakis.



L to R, Fred Gibson, guest of Dorothy and Glynn McKnight from New Jerusalem Missionary Baptist Church; Margie Weber; Leonard Weber; Dorothy Roman; Ben Washburn; Paulette Washburn.

List of 2012 Block Captains

STREET	BLOCK	CAPTAIN NAME	CAPTAIN EMAIL
Ashton	(Acacia-Lyndon)	Willie / Wanda Edwards	aq1552@wayne.edu
Ashton	(Acacia-Lyndon)	Adriann Lee	–
Ashton	(Lyndon-Eaton)	Lela Baker	jay-bak@hotmail.com
Ashton	(Eaton-Chalfonte)	Joe / Chiquita Spencer	bannacake46@yahoo.com • cspencer1@bcbsm.com
Ashton	(Chalfonte-Fenkell)	Sheila Wright	liladywright@sbcglobal.net
Ashton	"	Phil Schloop	ps547@sbcglobal.net
Rosemont	(Acacia-Lyndon)	Linda Thomas	–
Rosemont	"	Jacqueline Carson	j_carson01@hotmail.com
Rosemont	(Lyndon-Eaton)	Stephanie Young	sayoung2011@yahoo.com
Rosemont	(Eaton-Chalfonte)	Anne Thomson	AThompson1@Schoolcraft.Edu
Rosemont	"	Susan Vandenbrink	susanvandenbrink@gmail.com
Rosemont	(Chalfonte-Fenkell)	Chet / Mary McLeod	MaryTMcLeod@aol.com
Penrod	(Acacia-Lyndon)	William / Ora Brown	wwb14350@aol.com
Penrod	(Lyndon-Eaton)	Pat Turner	tranquiltravel1@yahoo.com
Penrod	(Eaton-Chalfonte)	Thelma Brown	mrzthelmabrown@aol.com
Penrod	(Chalfonte-Fenkell)	Yvette Bush	bushyvette@ymail.com
Faust	(Acacia-Lyndon)	Johnny Allen	jabrotherlove@ameritech.net
Faust	(Lyndon-Eaton)	–	–
Faust	(Eaton-Chalfonte)	Ulysses Freeman	Freeman@dwsd.org
Faust	"	Pam Weinstein	weinstein148@ameritech.net
Faust	(Chalfonte-Fenkell)	Michael Twyman	mjtwyman@sbcglobal.net
Faust	"	Anthony Bunkley	albunkley@sbcglobal.net
Greenview	(Lyndon-Eaton)	Ida Hewitt	ieeve@comcast.net
Greenview	"	–	–
Greenview	(Eaton-Chalfonte)	Annette and Mitch Welch	mitchwelch@sbcglobal.net
Greenview	(Chalfonte-Fenkell)	Ken / Mary Schneider	Rosedale6@aol.com
Greenview	"	Paul / Bernadette Kulesa	kulesap@gmail.com
Glastonbury	(Lyndon-Eaton)	Thomas Gatson	tdgatson@sbcglobal.net
Glastonbury	(Eaton-Chalfonte)	Rose Edwards	rs_edwards@yahoo.com
Glastonbury	(Chalfonte-Fenkell)	Debbie Gore	debbie_gore@msn.com
Glastonbury	"	Bobbie Phillips	
Glastonbury	"	Stephanie Flanagan	sflanag63@yahoo.com
Glastonbury	(Fenkell-Grand River)	Pete & Jean Baker	bakerjlb26@sbcglobal.net
Glastonbury	"	Kathy Roland	rrowtwo@aol.com
Stahelin	(Lyndon-Eaton)	Vincent & Rita Cardiel	–
Stahelin	(Eaton-Chalfonte)	Nancy Bitzarakis	Nancy2061@aol.com
Stahelin	(Chalfonte-Fenkell)	–	–
Stahelin	(Fenkell-Keeler)	Priscilla McDonald	pamcdonald@live.com
Stahelin	(Keeler-Grand River)		
Artesian	(Lyndon-Eaton)	Dorothy McKnight	glynndot@yahoo.com
Artesian	"	Molly Eklund-Easley	scionmee@msn.com
Artesian	(Eaton-Chalfonte)	Denotra T. Jackson	denotra@gmail.com
Artesian	"	Denise Beauregard	femmebelladonna@yahoo.com
Artesian	"	Joan Cooper	dtw1jc@att.net
Artesian	(Chalfonte-Fenkell)	–	–
Artesian	(Fenkell-Keeler)	Carolyn Cruse	blkreader@sbcglobal.net
Artesian	"	Lucille Bridges	lucille682@aol.com
Artesian	(Keeler-Grand River)	Jocelyn Rickard	JSRickie@Hotmail.Com
Warwick	(Lyndon-Eaton)	Chris / Ruth Remus	Ruth.Remus@SBCGlobal.Net • chris.remus@sbcglobal.net
Warwick	(Eaton-Chalfonte)	Rhonda Pugh	–
Warwick	(Chalfonte-Fenkell)	Chris Webb	christin-webb@sbcglobal.net
Warwick	(Fenkell-Keeler)	Carol Aldridge-Daniels	CAldrid2@Ford.Com
Warwick	(Keeler-Grand River)	Edmon Carmichael	eccgac@juno.com
Piedmont	(Lyndon-Eaton)	Triette Reeves	triree@detroitmi.gov
Piedmont	(Lyndon-Eaton)	Bill Schrader - Denise Gimpel	pmmmarine@sprynet.com
Piedmont	(Eaton-Chalfonte)	Charlotte Patnaude	CPatnaude@Prodigy.Net

STREET	BLOCK	CAPTAIN NAME	CAPTAIN EMAIL
Piedmont	(Chalfonte-Fenkell)	Lorna Braxton	–
Piedmont	(Fenkell-Keeler)	Dorothy Roman	aa7636@wayne.edu
Piedmont	(Keeler-Midland)	Keith & Mary Crosby	crosbyvision@ameritech.net
Piedmont	(Midland-Grand River)	Keith & Mary Crosby	crosbyvision@ameritech.net
Grandville	(Lyndon-Eaton)	–	–
Grandville	(Lyndon-Eaton)	Sandy Evans	sandyjevans@hotmail.com
Grandville	(Eaton-Chalfonte)	Deborah Kent	deborahkent@aol.com
Grandville	(Chalfonte-Fenkell)	Vashon Wiley	vwiley313@yahoo.com
“	(Chalfonte-Fenkell)	Judy Wimberley	jwimberlyb@aol.com
Grandville	(Fenkell-Keeler)	Willie/Marion Cockrell	cockrell.m@att.net
Grandville	(Keeler-Midland)	Hazel White	white.hazel@att.net
Grandville	(Midland-Grand River)	Cynthia Lewis	cynthialewis1788@sbcglobal.net • CLewis4@bcbsm.com
Westwood	(Lyndon-Eaton)	Wilborn Sargent	wsarge@sbcglobal.net
Westwood	(Eaton-Chalfonte)	Bernard & Esterline Mack	emack1230@gmail.com
W. Outer Dr.	(Evergreen-Auburn)	Francis Peterson	ndiva2000@yahoo.com
W. Outer Dr.	(Auburn-Minock)	Judith Rogan	judithrogan@sbcglobal.net
W. Outer Dr.	(Minock-Fenkell)	Henrietta Menifee	silverfoxmini@sbcglobal.net
W. Outer Dr.	(Fenkell-Keeler)	Sally Poindexter	–
W. Outer Dr.	(Keeler-Midland)	–	–
W. Outer Dr.	(Midland-Grand River)	–	–
Minock	(Park-W. Outer Dr.)	–	–
Minock	(W. Outer Dr.-Fenkell)	Madona Wiley	madonawi@yahoo.com
Auburn	(Park-W. Outer Dr.)	–	–
Auburn	(W. Outer Dr.-Fenkell)	–	–
Plainview	(W. Outer Dr.-Fenkell)	Charles Middleton (Pres)	–
Plainview	(W. Outer Dr.-Fenkell)	Loretta Smith	Loretta_c94@yahoo.com
Plainview	“	Vincent Ford	vford2@sbcglobal.net



Professionals Serving the Electrical Industry

Jim Turner
President

**Residential
Commercial
Industrial**

2550 Hilton Road
Ferndale, MI 48220-1544
Tel: (248) 543-9609
Fax: (248) 543-0404

Cell: (313) 910-5600
info@premiumelec.com
www.premiumelec.com

Discount RATES without discount SERVICE.



It's no accident more people trust
State Farm to insure their cars.
Call today.

Theodore C Brown Ins Agcy Inc
Theodore Brown, Agent
Southfield, MI 48076
Bus: 248-352-4757
ted.brown.j47u@statefarm.com

LIKE A GOOD NEIGHBOR



STATE FARM IS THERE.®

Providing Insurance and Financial Services

State Farm Mutual Automobile Insurance Company (Not in NJ), Bloomington, IL
P040034 12/04

RPIA's 2011 Performance to Budget

For fiscal year 2011, RPIA budgeted our income and expenses at \$31,360. We actually had an income of \$38,216.54 and expenses of \$31,720.71. There may be a few outstanding expenses from the last week in January but the majority, if not all, of our expenses have been captured.

Our income exceeded the budget by \$6,856.54. and our expenses exceeded our budget by \$360.71. The positive balance of \$6,495.83 currently remains in our

checking account and provides a cushion to begin the 2012 fiscal year.

We extend our thanks to the members who paid their dues and made additional financial donations. We also thank our advertisers, as well as all who worked to ensure we delivered on our promise to remain fiscally responsible to this neighborhood association.

RPIA Financial Committee

Rosedale Park Improvement Association Important Dates in 2012

BOARD MEETINGS

- Fourth Monday of each month at the GRDC offices, 19800 Grand River, 7 PM
- February 27
- March 26
- April 23
- May 21 (third Monday due to Memorial Day)
- June 25
- [No July meeting]
- August 27 (if necessary)
- September 24

- October 22
- November 26
- December 17 (third Monday due to Christmas)

GENERAL MEMBERSHIP MEETINGS

- Tuesdays at the North Rosedale Park Community House, 18445 Scarsdale, 7-9 PM
- March 13, May 8, September 11, November 13

EVENTS

- Detroit Partnership Day – Saturday, March 31
- Neighborhood Open House – Sunday, May 6
- June Day Picnic – Saturday, June 2
- 30 Block Garage Sale – Saturday, June 23
- Holiday Breakfast – Saturday, December 1
- Annual Banquet – Friday, January 25, 2013

We love the trees you don't!

Tree removal • Tree trimming • Tree pruning
Stump grinding • Firewood
Seasoned firewood

**FREE
ESTIMATES**



**We will meet
or beat
any competitor
estimate—
just
show us!**

**EJ TREE
SERVICE**

Commercial
and
Residential

313-205-6236
or 313-381-0145 (emergency)

INSURED FOR
LIABILITY

10% off removal or trim over \$200 when you mention this ad!

FY 2011 and FY 2012 Finances

INCOME	FY 2011 budget	FY 2011 actual	Difference	FY 2012 budget
Membership Dues	27,000.00	28,973.00	1,973.00	30,000.00
Donations	0.00	2,781.00	2,781.00	0.00
Ads in newsletter	3,000.00	3,972.00	972.00	4,000.00
Interest Income	20.00	11.74	-8.26	0.00
June Picnic	40.00	35.80	-4.20	40.00
Pancake Breakfast	300.00	603.00	303.00	300.00
Banquet Tickets	1,000.00	1,840.00	840.00	1,000.00
TOTAL INCOME	31,360.00	38,216.54	6,856.54	35,340.00

EXPENSES	FY 2011 budget	FY 2011 actual	Difference	FY 2012 budget
Admin. & Operating Costs				
Bank fees	0.00	123.00	-123.00	200.00
Admin assistant	1,200.00	900.00	300.00	1,200.00
Admin of Records	2,100.00	1,640.00	460.00	1,920.00
Quickbooks/Finance	360.00	306.92	53.08	325.00
Copying/Printing	280.00	22.44	257.56	280.00
Directors Insurance	550.00	514.00	36.00	550.00
NRPCH rental	875.00	780.00	95.00	875.00
Meeting Refreshments	400.00	353.46	46.54	400.00
Block Captain Meeting Refresh.	150.00	161.22	-11.22	300.00
Website/Web master	420.00	420.00	0.00	500.00
E-Blast	240.00	0.00	240.00	240.00
Hotline	175.00	175.00	0.00	200.00
Invoice Printing	500.00	643.03	-143.03	1,000.00
Invoice Mailing	500.00	1,045.15	-545.15	1,000.00
Refunds/Island Rebates	0.00	182.00	-182.00	100.00
New Neighbor Kits	200.00	58.94	141.06	100.00
Office Supplies -paper,ink	0.00	0.00	0.00	100.00
P.O. Box Fee	0.00	69.00	-69.00	65.00
Post office service fees	0.00	465.00	-465.00	465.00
Postage - Correspondence	0.00	148.08	-148.08	150.00
Newsletter Layout Design	2,500.00	1,900.00	600.00	2,100.00
Newsletter Printing (Spartan)	2,300.00	2,280.00	20.00	1,700.00
Newsletter Mailing (Messenger)	535.00	426.00	109.00	500.00
Newsletter Editor Stipend	500.00	400.00	100.00	900.00
Advertising Director				1,200.00
Subtotal	13,785.00	13,013.24	771.76	16,370.00

One-Time Expenses				
President's Appreciation	150.00	200.00	-50.00	200.00
State of Mich Registration Fee	100.00	25.00	75.00	25.00
Beautification Awards	300.00	572.48	-272.48	300.00
GRDC Realtor Open House	250.00	250.00	0.00	300.00
Educational/ Assoc Support	75.00	0.00	75.00	300.00
Signs, Label Replacements	0.00	270.00	-270.00	300.00
Web Software Upgrade	0.00	286.24	-286.24	0.00
Community Donations	100.00	200.00	-100.00	200.00
Subtotal	975.00	1,803.72	-828.72	1,625.00

EXPENSES (cont.)	FY 2011 budget	FY 2011 actual	Difference	FY 2012 budget
RPIA Support Programs				
Annual Banquet	1,250.00	1,640.00	-390.00	1,300.00
Easter Egg Hunt*	250.00	206.75	43.25	250.00
June Picnic	800.00	648.65	151.35	600.00
Pancake Breakfast	500.00	496.82	3.18	500.00
30 block Sale Advertising	100.00	0.00	100.00	0.00
Angel's night Support	250.00	159.00	91.00	250.00
Detroit Partnership				
Clean up Day	250.00	52.95	197.05	250.00
Snow Removal	10,600.00	10,200.00	400.00	9,400.00
Vacant property Research	300.00	300.00	0.00	300.00
Code Enforcement				
Expenses	300.00	0.00	300.00	300.00
Unanticipated expenses	2,000.00	3,199.58	-1,199.58	4,195.00
Subtotal	16,600.00	16,903.75	-303.57	17,345.00
TOTAL EXPENSES	31,360.00	31,720.71	-360.53	35,340.00
FY 2011 INCOME		38,216.54		
FY 2011 EXPENSES		-31,720.71		
Transferred to FY2012 budget		6,495.83		

* For 2012, this line item will be reprogrammed as a family-fun event.

PROMPT • PROFESSIONAL • COURTEOUS

Need help with your lawn?

Call 1-888-4-LAWN HELP

(8 8 8 - 4 5 2 - 9 6 4 3)

When it comes to creating thick, green lawns, depend on Greener Still, Inc. Our professional programs and experienced technicians can give you a lawn your whole family will enjoy. And, since we're a local company, we get to know you and your individual lawn needs. Depend on us to deliver what your lawn really needs...when it needs it...all season long.

- Fertilization/
Weed Control
- Aeration/Seeding
- Expert Tree Care:
Removal, Trimming,
Spraying & Feeding
- Insect Control
- Sprinkler System
Installation/Service

Call Greener Still, Inc. today
for a personal, no-cost evaluation of your lawn care needs.

TURF & TREES
State Licensed
and Insured

greener still inc. ...a growIng concern

TURF AND TREE EXPERTS SINCE 1965

Toll-free 1-888-4-LAWN HELP

(8 8 8 - 4 5 2 - 9 6 4 3)

Major credit cards accepted

Rosedale Park Improvement Association Membership Dues Paid in 2011

A. WRIGHT-LAWRENCE
AARON & ALESIA STOWERS
AARON & DOREEN NICHOLS
AARON JORDAN
ABNER & MARIE WHITE
ADAM H. & BRENDA W. BELL
ADRIANN LEE
ADRIENNE JONES & AL BROWN
AISHA QUARLES
AL C. & VIVIEN APPLING
ALAN M. JACOBSON & NANCY SLEZAK
ALFRED L. & JOYCE A. HARRIS
ALISHA M. HOLT
ALLEN WALKER
ALONZO & DESIREE MARABLE
ALONZO & RITA GLAZE
ALPHA & VENDER HUBBARD
ALVIN & FELISA GOLDSMITH
ALVIN & PAMELA DAY
AMOS & LETITA N. UDUMA
ANDRE P. BROWN & CAROLYN BURRELL-BROWN
ANNETTE BEARDEN
ANN-MARIE HINES
ANTHONY & BERNADINE HOSTON
ANTHONY B. & CYNTHIA MARSHALL
ANTHONY BUNKLEY
ANTOINETTE C. WARREN
ANTON & NATASHA SWYER
ARNETTE R. & PRESTON HAYES, JR.
ARNITA E. ROSS
ARTHUR & JANET TISDALE
ARTHUR CARTER
ARTHUR T. GRIFFIN JR.
ARVIE L. & MILTON E. GRAHAM, SR.
BARBARA H. GOLDMAN
BARBARA J. & HENRY WILLIAMS, JR.
BARRY & GLEE D. SODERGREN
BEN & PAULETTE WASHBURN
BERNARD & ESTHERLINE R. MACK
BERNARD GAY
BETTY J. & CHARLES G. BRANTLEY, JR.
BETTY J. DARAMOLA
BETTY L. & WALTER THOMAS, JR.
BETTY O. FERNALD
BETTY PAYTON
BEVERLY J. FLOYD ROWELL
BLAKE & AMY MAURICE
BLANCHE LOWE
BOBBIE & ANDREA McBRIDE
BOBBIE & PATRICIA TROTTER
BOBBY & LILLIE SIMS
BOBBY GRANT
BOBBY L. LANE
BONNIE B. & RICHARD B. HALLORAN JR.
BONNIE F. MEAD
BONNIE JO GOTSHALL
BRENDA GREEN
BRIAN T. & DONETA E. WEBB
BRIE FORT
BRUCE JACKSON & CYNTHIA JOLLEY-JACKSON
BURT CARP
BYRON & ALUNDA BOYKIN
CARNELL & GLORIA McLAURIN
CAROL BRESNAY
CAROLE & JOE N. DAVIS, SR.
CAROLYN MURPHY
CAROLYN & RICHARD A. FLOYD, JR.
CAROLYN D. & LEON BURKE JR.
CAROLYN D. CRUSE
CAROLYN ENGLISH AKPE
CARRIE L. SHEREVE
CARY C. & QUEEN E. WEST
CASSANDRA RICE
CATHY A. THOMAS
CECIL & SHANN MORGAN
CEDRIC & GEORGEANN DARGIN
CHARLENE STUDSTILL
CHARLES & BETTY PIERCE
CHARLES & LYNDSEY McGEE
CHARLES & SORAYA VAUGHN
CHARLES A. BENJAMIN
CHARLES E. & PARTICIA F. BROWN
CHARLES E. & REGINA C. LEE
CHARLES J. & REGINA WEBB
CHARLOTTE L. HAMILTON
CHARLOTTE PICKETT
CHERYL WOODS
CHET L. & MARY M. McLEOD
CHIQUITA D. & JOSEPH W. SPENCER, JR.
CHRISTIAN A. & RUTH ANN REMUS
CHRISTINA M. FRANCO & P. GERHARDT
CHRISTINE M. MOORE
CHRISTINE S. PREUSS
CHRISTINE WALKER
CHRISTOPHER & MONISHA SCOTT
CLARABELLE HARRIS
CLARENCE & JEAN L. BAKER
CLARENCE & JOSIE HUDSON
CLAUDIA M. HELTON
CLAYBURN & BERNADETTE A. LEWIS
CLEO BOLDON
CLEO F. HILL-BAKER & WALTER L. BAKER
CLEOPHAS HARRIS JR.
CLIFFORD JACKSON & ANGELL LOVE-JACKSON
CLIFFORD TOWNSEND
CORNELL & DEBRA FEARS
CREIGHTON ADAMS
CRYSTAL & MITCHELL SHAMSUD-DIN
CURTIS WILLIAMS & GIGI BRANHAM-WILLIAMS
CYNTHIA & ALEXANDER MARSHALL, JR.
CYNTHIA D. & JOSEPH WILLIAMS JR.
CYNTHIA L. LEWIS
DALE & SHARON SEATON
DALE A. & CAROLYN CATHEY
DALE E. & ANNE THOMSON
DAMON & STEPHANIE WEBB
DAN & KAREN WILLIAMS
DANA TALBERT
DANIEL & VICKI McLELLAN
DARIA I. WILLIAMS
DARLENE S. MITCHELL
DARNELL FULLER
DARNEY T. & DEBORAH STANDFIELD
DARRYL & THELMA BROWN
DAVID & MARY M. McCALL
DAVID & PAMELA SUTTON
DAVID & ROXANNE JEFFERSON
DAVID & SANDRA LEGG
DAVID & SUSAN BERRY
DAVID & TINA EVERETT
DAVID & YVONNE WILSON
DAVID A. GREGORY
DAVID J. THOMAS, JR.
DAVID W. JONAH & CAROLINE KINSLER JONAH
DEBORAH A. GORE
DEBORAH LaVIOLETTE
DENNIS & DEBORAH WILLIAMS
DENNIS & SHIRLEY RENCHER
DENNIS WALKER & PAMELA D. WILLIAMS-WALKER
DENOTRA T. JACKSON
DEREK & ELIZABETH ENGLISH
DETROIT RESIDENTIAL
OPPORTUNITY FUND 1, LLC
DEWAYNE & CHARLOTTE MILLER
DIANA & CHARLES E. EATON SR.
DIANE H. & HARDING FARS, JR.
DIANNA LITTLE
DIEDRE & MARIO JOHNSON
DIMITRIS E. & NANCY E. BITZARAKIS
DION J. THOMAS
DON A. YOUNG
DONALD E. MCCOY
DONNA J. SHADE
DONNA J. SHINE
DONNA J. WEST & KEVIN LAMONT PARKER
DONNIE R. & SAM GOSEY
DORIS A. & ROBERT DICKHUDD
DORIS A. & ROBERT DICKHUDD
DOROTHY & ROBERT E. BYRD, SR.
DOROTHY F. POOLE
DOROTHY M. SCOTT
DOROTHY ROMAN
DORRIS & BARBARA J. WOODS
DORTHENA COPE
DOUG & WENDY SANDERS
DR. JUDY ALHAMISI
DR. MELANIE A. HWALEK
DWAYNE A. & CHARISSE SMITH
DWIGHT & ANNETTE MARIE GOVAN
DWIGHT E. & CARLA BLAKEY
DWIGHT E. & CASSANDRA E. SMITH
E. HOLMES
E. LAVERNE & JESSIE L. BOBBITT, JR.
EARL C. HOWARD
EARL D. & SHIRLEY L. McCULLOUGH
EARL D. MINTER
EDDIE & PHYLLIS WATKINS
EDDIE L. FORD & VINCENT FORD
EDDIE WRIGHT, JR.
EDMON C. CARMICHAEL & G.A. CARMICHAEL
EDWARD E. & CECILIA WEATHERS
EDWARD L. & SUSAN L. HAROUTUNIAN
EDWIN & DORIS A. MOORE
EGBERT D. & ANNIE CHAVOUS
ELAINE & FRANK, LEE JR.
ELISA & JAMES STEVENSON
ELISE ANN DANIELS
EMBENGA & BELINDA LOUYA
ERIC R. ADAMS
ERICK D. & DIONNE SMITH
ERIE & PAMELA HODGINS
ERNEST & HELEN STANLEY
ERROL GRIFFIN
EUGENE P. & BARBARA A. YARNELL
EVELYN LITTLES
FLORENCE NEAL
FRANCES J. HUGGINS
FRANK A. & CONNIE S. OBELNICKI
FRANK H. WOODS
FRANK McMILLAN, JR.
FRANK R. & CAROLE J. DAWSON
FRED & DEBORAH FINLEY
FRED & DIONNE GEORGE
FRIEDA H. ROBINSON
GARETT JIHAD
GARY & NETTIE JONES
GARY C. & CAROLE ANN BEAMAN
GARY M. TOGERSON & DAWN JONES-TORGERSON
GENE S. NUNLEE & TED E. RILE
GENEVA L. & DEBORAH D. KENT
GEORGE H. & ZELDA McRAE
GERALD C. & DEBRA MORGAN
GERALD D. & DEBRA PICKETT
GERTRUDE MARY STRALE
GILLIAN A. JOHN
GLEN L. BALDWIN
GLENN M. & CHRISTINE N. PELOT
GLYNN D. & DOROTHY M. McKNIGHT
GRACE M. ANDREWS
GRDC OWNED
GREGORY A. BUTTS
GREGORY L. & NOVELLA L. DANIELS
GUY L. & NARVELL L. PARKER
GWENDA A. PICKETT MEADOWS
H. AVON & SANDRA D. MARTIN
HAPPI J. RASHEED
HAROLD L. & ZELDA J. HOLLOWAY
HARRIETT A. MOTTLEY
HARVEY D. & DELORES A. FLUELLEN
HARVEY L. & AUSTERINE HAMBRICK
HATTIE WEBB
HEIDI J. SAMPSON
HELEN I. TUCKER
HELEN K. & M. JANE PHILLIPS
HENRIETTA MENIFEE
HILDA L. ANDREWS
HILDRED & BARBARA BYNUM
HOPE MACLIN-DAYS
IDA HEWITT
INGEBORG TAYLOR-HILL
IVAN A. & SHARON M. JOHNSON
JACK & HELEN M. SURRELL
JACQUELINE E. OWENS
JACQUIE CARSON
JAMES & LUCILLE BRIDGES
JAMES & QUEEN E. MOORE
JAMES DARTY
JAMES E. KENYON
JAMES L. & JOYCE KEENER
JAMES T. & SYLVIA J. DUNLAP
JAMES WESTPHAL
JAMIE B. SPERL
JANICE M. & LA DONNA M. CATO
JAY & MARIA FETIZANAN
JEAN TAYLOR & KEITH REDDEN
JEANETTE GREENE
JEANNE E. REM
JEFFREY HUNT
JENEIL C. JOHNSON
JENISE & MIKAEL D. THORNTON, JR.
JENNY A. & DENISE BEAUREGARD
JEROME & GAIL CULLORS
JERRY D. & CLARA M. CHILDRESS
JERRY J. HAYGOOD
JESSE & KAREN A. BUNKLEY, JR.
JILL LAUFER & DENNIS JONES
JIMMIE & ANGIE WAFER
JOAN K. COOPER
JOAN SMITH
JOBE C. & DELCENE E. HUGHLEY
JODY CONRADI STARK
JOHN & MARY E. TASHNICK
JOHN C. & MARY L. HANLEY
JOHN GARIK & CHRISTOPHER A. YOUNGNER
JOHN L. & ANGELA D. SMITH
JOHN V. CAIN
JOHNATHAN & EDWANDA EDWARDS
JON KWIAT & ROSA N. RODRIGUEZ
JONATHAN CRAWFORD
JONATHAN & DIANA BROWN
JOSEPH & NIKEYE TAYLOR
JOSEPH G. & PATSY A. GORDON
JOSEPH M. & LINDA A. PRUCHNIK
JOSEPH R. & SYLVIA M. CRAWFORD
JOSEPHINE M. MERCHANT
JOY E. RELIFORD
JOYCE A. ATKINS
JUDITH ANN WIMBERLY
JUDITH W. ROBINSON
JULIA N. LONGSTREET
KALI J. & STEPHANIE NEWSOM
KAREN E. EGGLESTON
KAREN FAULK
KARY LOVETTE & PHYLLIS A. LOVETTE
KATHERINE M. GAMMA
KAWANDA THOMPSON
KEITH E. & MARY R. CROSBY
KENNAN NASH
KENNETH & CAROLE SMITH
KENNETH & CATHY G. LONG
KENNETH & JURUSHA GREEN
KENNETH & MICHAEL TRAIL
KENNETH & TRACEY LOFTON
KENNETH M. & MARY T. SCHNEIDER
KEVIN H. & CATHY D. ROZIER
KIM L. STEWART
KIRK & DIANE ARNOLD
KOLI & TRACEY L. WALLACE
KRYSTAL HARRIS
LA BLANC & KATHLEEN M. ROLAND
LANDY SMITH III
LANGSTON T. CLARK
LANZA K. COBB
LARRY & ANDREA GREEN
LARRY & GWENDOLYN CAMPBELL
LARRY & SHERITA BLANFORD
LARRY & TINA CASTLEBERRY
LARRY BURTON
LARRY E. & SHERRY J. THOMPSON

LARRY L. & DIANA L. DEVEREAUX
 LARRY PATERNI & LEN GREGG
 LATANYA S. JORDAN
 LAVERNE JONES
 LAVERNE LEWIS
 LAWRENCE SIMS
 LEE CARTWRIGHT
 LEE O. BENNETT
 LELA BAKER
 LENA M. THOMPSON
 LEON & JOAN G. MARTIN
 LEON N. JACKSON, JR
 LEONARD G. & PAMELA GILBREATH
 LEONARD J. & MARGARET M. WEBER
 LEPOLEON HOLLENQUEST
 LEROY HERNDON
 LESLIE C. MCCRAY
 LINDA F. HUTCHINSON
 LINDA M. BRAWNER
 LINDA M. GRAY
 LISA CANDIE
 LLOYD M. & SUSAN K. VANDENBRINK
 LOIS PHILLIPS
 LORNA A. & GEORGE BRAXTON III
 LORRAINE MOSES
 LOSI M. McAFEE
 LOTTIE TABRON
 LUELLA & LATONYA J. WILLIAMS
 MAE F. QUICK-PETERSON & CHARLIE M. PETERSON
 MARCHELLE HOSEY
 MARCIA KAY HANELL PHILLIPS
 MARGARET D. WILLIAMS
 MARIA T. POWELL
 MARION & WILLIE S. COCKRELL JR.
 MARK A. SPICER
 MARK SHEAR & CLARENCE JONES
 MARON LLOYD JR & PATRICIA TREVINO
 MARSHA PICKENS
 MARTHA CLEAVES
 MARTHA D. KEILLOR & S. DRISCOLL
 MARTHA GREGORY & CYNTHIA A. BELL
 MARVIN OWENS
 MARY HARRIS
 MARY KAY & DEE RABEN
 MARY KAY & STEPHEN YANCEY
 MARY L. ADAMS, LMSW
 MARY L. PHILLIPS
 MARY WATKINS
 MATTHEW & REGINIA DIXON
 MATTHEW M. MALONE
 MAURICE JOHNSON
 McDONALD'S #567
 McKINLEY TENNY & DENISE PARKER
 MELANIE & GODFREY H HOWARD, JR
 MELBA WADE FIELDS
 MELVIN & SHARON JACKSON
 MERINE FOX
 MICHAEL & CHRISTINE M. WEBB
 MICHAEL & JUDITH ROGAN
 MICHAEL & MOLLY THIRY
 MICHAEL & VICKI HERRON
 MICHAEL G. MOONEY
 MICHAEL J. & PAT FOLKS
 MICHAEL M. McDONALD
 MICHELE C. & RICARDO WHITEHEAD
 MICHELE CUNNINGHAM
 MICHELLE ROBY
 MICHELLE WALTERS
 MILDRED J. MORRIS
 MILTON H. & ADRIENE D. DURHAM
 MOLLY EKLUND-EASLEY
 MONICA & LEE RICHARDSON JR
 MONIQUE MOORE
 MORRIS K. & GLORIA J. JONES
 MR. R. WELLONS
 MR. & MRS. FRANK PARDON
 MRS RALPH FARR
 MRS. CHARLES SMITH
 MS. CHARLIE M. BLAND
 MURIEL SMITH
 NANCY EISENBERG & JOHNITTA WATTS
 NANCY S. FERRISS

NATALYA S. LALOR
 NATHAN SMITH & PAULINE G. CASH SMITH
 NICHOLAS J. & CHERYCE D. CHAPTAL
 NORMAN & E. CHARLENE WOODLEY
 OBBIE L. & MARY WIGGINS
 OKELA NEVEAUX
 ONA L. LaBUTTE
 ONEIDA K. & NORMAN WATSON
 OTTO & DEBORAH STALLWORTH
 OWEN M. & BRENDA V. HARDAWAY
 PAMELA WEINSTEIN & JAMES N. DWIGHT
 PATRICIA A WILLIAMS
 PATRICIA A. & ANTHONY HINTON
 PATRICIA A. HALE-GREEN
 PATRICIA E. & JOHN C. KATES III
 PATRICIA E. APPLING
 PATRICIA J. de BOER
 PAUL & DEBORAH JOHNSON
 PAUL KULESA & BERNADETTE CICIORA-KULESA
 PETER O. RETTIG
 PHILLIP & STACEY ROBINSON
 PHILLIP SCHLOOP & MELINDA C. LEPERE
 PHYLLIS JOSE & RICHARD C. MURRAY
 PHYLLIS STEWART
 PHYLLIS STOWE-JACKSON & VENUS JACKSON
 QUENTIN Q. LOTT & LAYNA E. GARDNER-LOTT
 R. ANTONIO WASHINGTON
 RALAYSIA U. BOYD
 RANARD & WINONA S. BYNUM
 RANDY & SHEILA A. ROSS
 RAPHAELWASHINGTON
 RAQUEL & GIBRAN GARTIN
 RAY & KAREN BAUX
 RAYCHEL & VIVIAN D. ROBERTS
 RAYMOND & DIANE L. DUDUS
 RAYMOND & JERALEAN SOWELL
 RAYMOND BURKHARDT
 RAYMOND U. DAWSON
 RAYNELL & PRISCILLA MCDONALD
 REGINALD & VALERIE RICHARD
 RENEE SHORT
 REPRESENTATIVE HARVEY SANTANA
 REV CULLIAN W. HILL
 RHONDA & LEON J. JOHNSON, JR
 RHONDA PUGH
 RICHARD C. & BOBBIE D. PHILLIPS
 RICHARD & SHIRLEY JOHNSON
 RICHARD A. & BEVERLY A. TURNER
 RICHARD H. & JOYCE L. FORD
 RICHARD R. & ELIZABETH A. QUICK
 RICKEY TRICE
 RITA BRITTON
 ROBERT & THELMA DAVIS
 ROBERT D. & MARIANNE ROUSSEAU
 ROBERT E. & RITA MILLER
 ROBERT G. & MARY A. ADAIR
 ROBERT M. & MARGERY F. HOLLAND
 ROBERT W. & LISA B. CASTON
 ROBIN & MINNIE STEWART
 ROD & SHARON TAYLOR
 RODERICK VEIL
 RODNEY A. & MINTY JAMES
 ROGER & SHARON ADDISON
 ROMEO J. & BERNADETTE A. HARVEY
 RON & MILDRED E. PATRICK
 RON J. & DEMETRYE M. ENGLISH
 RONALD & BEVERLY GRACIA
 RONALD & CHARLOTTE PATNAUDE
 RONALD C. JONES
 RONALD H. & ETHEL L. GIBSON
 RONALD L. & SAUNDRA FREEMAN
 ROSA LEE MALONE
 ROSALIND BRADEN
 ROSALIND McDAVID
 ROSCOE G. & DELORES MAYFIELD
 ROSCOE L. & TEENA THOMAS
 ROSEMARY & GLEN BLACKMON
 ROY & JANINE PORTERFIELD
 ROY & VARENE WILLIAMS

RUDOLPH & GERALDINE J. VESEY
 RUTHIA GLENN
 SALLY WILKINSON
 SANDRA B. BOYD & STANLEY ALLEN
 SANDRA M. BROWN
 SEAN & MELODY FRANKLIN
 SETH & LESLIE PETTY
 SHANDRA PERRY
 SHANNON C. MOODY
 SHANNON M. REMSON
 SHARON D. BLESSMAN
 SHARON D. NORMAN
 SHARON M. & JERRY L. WEAVER
 SHARON M. BOYD
 SHARON MYERS-COGER
 SHEILA & ARCHIE M. CROOKS
 SHELDON & DELORES D. WASHINGTON
 SHERA T. DRAKE
 SHERRY COLVIN
 SHERRY WICKS
 SHIRLEY RAMOS
 ST. JAMES EVANGELICAL LUTHERAN
 STACY PUGH
 STACYE L. & RITA L. DOWLEN
 STANFORD BELUE
 STELLA PUCKETT
 STEPHANIE A. YOUNG
 STEPHEN & ALMA JEAN HILL
 STEPHEN & DENISE BOLES
 STEPHEN LANGE/LANGE PROPERTIES II
 STEVEN & NANCY LOCKHART
 STEVEN & SEKAI D. BROADEN
 STEVEN A. ALMAN
 STEVEN CARTER
 SUSAN RAMOS
 TAHIRA & MAURICE YANISH
 TERICKA C. & MICHAEL C. LIPSCOMB
 TERRELLINE JACKSON
 THERETHEA & VINCENT CARDIEL
 THOMAS & GLENDA F. CARGILE
 THOMAS & PAULA H. WALTERS
 THOMAS E. & DEBRA F. GATSON
 THOMAS E. JACKSON
 THOMAS KEMP
 TIM & VERONICA LEONARD

TIMOTHY H. & FAYE JONES
 TIMOTHY LEWIS & GLORIA MOTEN-LEWIS
 TONY B. COTTON & DAWN LEE-COTTON
 TONY S. & VESTA A. RUMPHY
 ULYSSES & CYNTHIA JENKINS
 ULYSSES & WANDA FREEMAN
 VALARIE V. ORR
 VALERIE & VANESSA GARY
 VALERIE D. & PETER EVANS, JR.
 VALERIE SMITH
 VAN B. & JANNIE M. NASH
 VERONICA DAWKINS
 VICKI L. WELCH
 VICTORIA C. & ELLIS C. BATES, JR.
 VINCE A. FORD
 VIRGIL G. MARSHALL
 VIRGINIA TATE
 WALLACE & LIZZIE M WILKES
 WARRICK & ANGEL M. YOUNG
 WESLEY PRUITT
 WILFRED M. & MOZELLA TARVER
 WILL & VIRGINIA ALLEN
 WILLIAM & DOROTHY J. GILBERT
 WILLIAM A. & LITHA R. MASON
 WILLIAM A. & MARILYN A. FLOWERS
 WILLIAM C. & LAVANDA CALHOUN
 WILLIAM E. SCHRADER & DENISE M. GIMPEL
 WILLIAM H. & MILDRED WARREN
 WILLIAM L. & DORIS P. MILLER
 WILLIAM L. GOUDY
 WILLIAM S. & ELLA J. DOOLEY
 WILLIAM T. & JOANN KELLY
 WILLIAM T. & MARGARET W. NOLAN
 WILLIAM W. & ORA H. BROWN
 WILLIE & RENEE KENT
 WILLIE & WANDA E. EDWARDS
 WILLIE L. & TONDALYA G. CRAWFORD
 YOLANDA & PERCY WARMACK II
 YOLANDA C. CLEMONS
 YVONNE BRANCH
 VACANT (12 Homes)

Rosedale Park News Advertising Rates

Did you know that ads in the *Rosedale Park News* reach over 800 households in and around Rosedale Park for a very reasonable cost?

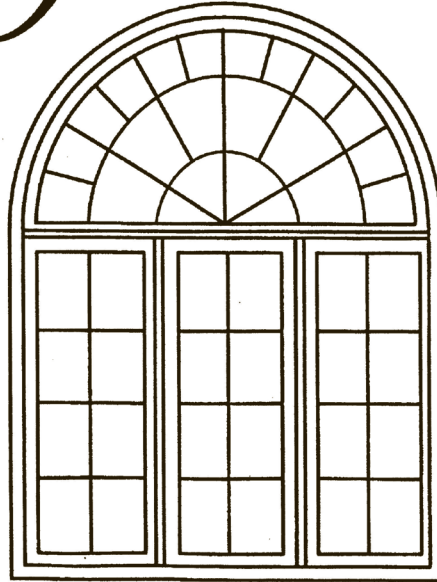
For more information and to place an ad, please contact Advertising Coordinator Kevin Cozey at 313-570-2673 or kevcozy@aol.com.

AD TYPE	COST/ISSUE
Business card	\$24
Quarter page	\$60
Half page	\$120
Full page	\$240
Personal classified*	Free for RPIA members!

NOTE: Prices above are for space only. An additional one-time set-up fee may be charged for new ads and revisions of existing ads. Fees vary depending on complexity of set-up. Copy for new and revised ads is due the 1st of the month prior to the month of publication.

**For individuals and young people only – not for adult-owned businesses; must be text only, and 50 words or less.*

Kelly Window



MANUFACTURING

Historic Window Specialist
Custom Made Wood Windows

Built any size, any shape, and in any color

15000 Linwood St.
Detroit, MI 48238
(313-861-6910)

RPIA CONTACT LIST - 2012

OFFICERS

President

Mary McLeod (2012)
15075 Rosemont • 313-272-1704
marytmcleod@aol.com

First Vice President

Pam Weinstein (2012)
14810 Faust • 313-837-2252
weinstein148@ameritech.net

Second Vice President

Stacy Pugh (2012)
14648 Greenview • 313-574-8889
pughsl2002@yahoo.com

Treasurer

Thom Gatson (2012)
tdgatson@sbcglobal.net

President Emeritus

Carolyn Cruse (2012)
15329 Artesian • 313-273-4324
blkreader@sbcglobal.net

BOARD OF DIRECTORS

Deborah Gore (2011-2013)
15000 Glastonbury • 313-838-3243
Debbie_gore@msn.com

Minty Kelly James (2012-2014)
14573 Piedmont • 248-697-1796
mintykellyjames@gmail.com

Deborah Kent (2011-2013)
14941 Grandville • 313-836-4737
msdeborahkent@aol.com

Glynn McKnight Sr. (2010-2012)
glynndot@yahoo.com

Chris Remus (2010-2012)
14574 Warwick • 313-837-3215
chris.remus@sbcglobal.net

Stephanie Young (2012-2014)
14567 Rosemont • 313-334-8192
sayoung2011@yahoo.com

CONTRACTORS & KEY CONTACTS

Administrative Assistant

Priscilla McDonald
pamcdonald@live.com

Administrator of Records

A. Wright-Lawrence
adwldraw@aol.com

Block Captain Coordinators

Dorothy McKnight
glynndot@yahoo.com

Molly Eklund-Easley
scionmee@msn.com

New Neighbor Kit Coordinator

Bill Nolan
15017 Greenview • 313-838-9035
sweetgrass59011@gmail.com

RP NEWS Editor

Amanda LeFranc
rosedaleparknews@yahoo.com

RP NEWS Advertising Coordinator

Kevin Cosey • 313-570-2673
kevcozy@aol.com

RP NEWS Layout Designer

Linda Liang

RPIA MESSAGE HOTLINE • 313-927-1089

www.rosedalepark.org

To sign up for the weekly electronic Rosedale Park newsletter,
send e-mail to rpiablast@gmail.com

Rosedale Park News

Serving a Friendly Neighborhood
U.S.P.S. 077-610

The official publication of the Rosedale Park
Improvement Association (RPIA) is published
six times a year by RPIA at
19800 Grand River, Detroit, MI 48223.

Subscription Price

RPIA Members, \$5 per year of \$45 annual dues.
Non-members, \$5 per year.

Periodicals Postage paid at Detroit, Michigan.

Editor: Amanda LeFranc

rosedaleparknews@yahoo.com

Advertising Coordinator: Kevin Cosey

313-570-2673 or kevcozy@aol.com

Designer: Linda Liang

linda.liang@att.net

Postmaster: Send address changes to
Rosedale Park News, PO Box 23113, Detroit, MI 48223

Printed by Spartan Forms
24205 Ann Arbor Trail, Dearborn Heights, MI 48217
313-278-6960

Calendar of Events

MARCH

Tues., March 13.. RPIA General Membership
Meeting, 7 PM
North Rosedale Park
Community House
18445 Scarsdale,
off Bretton Drive at Glastonbury

Sat., March 17..... Rosedale Recycles, 10 AM-2 PM
18605 Pierson

Mon., March 26.. RPIA Board Meeting, 7 PM
19800 Grand River

Sat., March 31..... Detroit Partnership Day,
9 AM-3 PM
Flintstone Park

APRIL

Sun., April 1..... Advertising deadline
for May / June issue of RP News

Tues., April 10.... Article submission deadline for
May / June issue of RP News

Sat., April 21..... Rosedale Recycles, 10 AM-2 PM
18605 Pierson
*(This date includes household
hazardous waste collection)*

Coming in May: Neighborhood Open House,
Sunday, May 6, 1 PM-5 PM

**ROSEDALE PARK
IMPROVEMENT ASSOCIATION**

P.O. Box 23113
Detroit, MI 48223
313-927-1089

Editor: Amanda LeFranc
rosedaleparknews@yahoo.com

**ROSEDALE
GRADUATES:
Send Us
Your News**



The Rosedale Park News is happy to recognize recent high school or college grads from our neighborhood. Proud parents, spouses, and graduates are invited to send notices to rosedaleparknews@yahoo.com.



ROSEDALE RECYCLES

**Saturday, March 17
Saturday, April 21
10 AM - 2 PM
18605 Pierson Street**

**City living is great.
It's best in
Rosedale Park!**